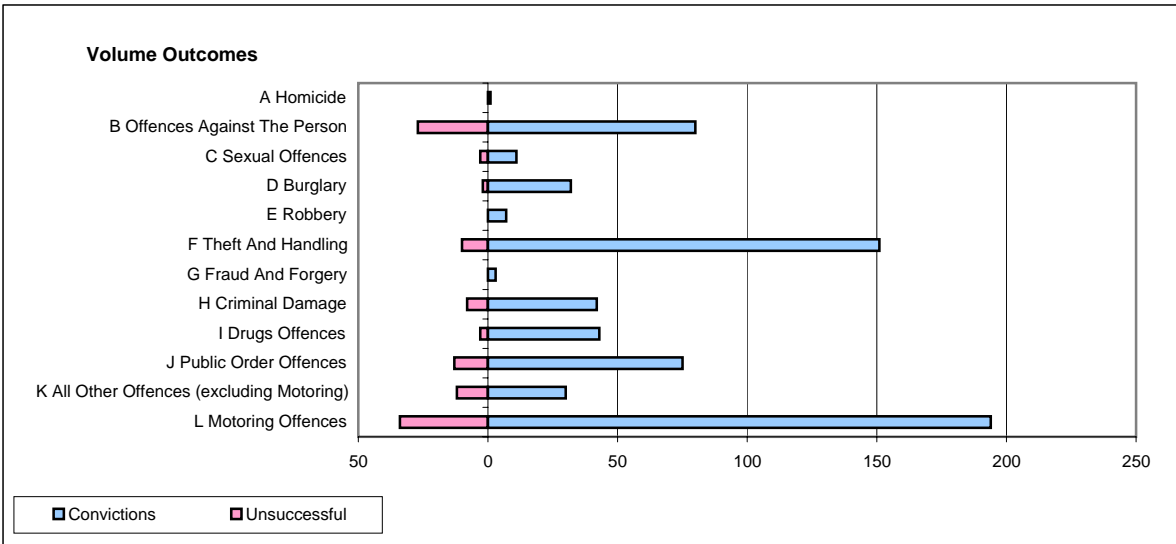
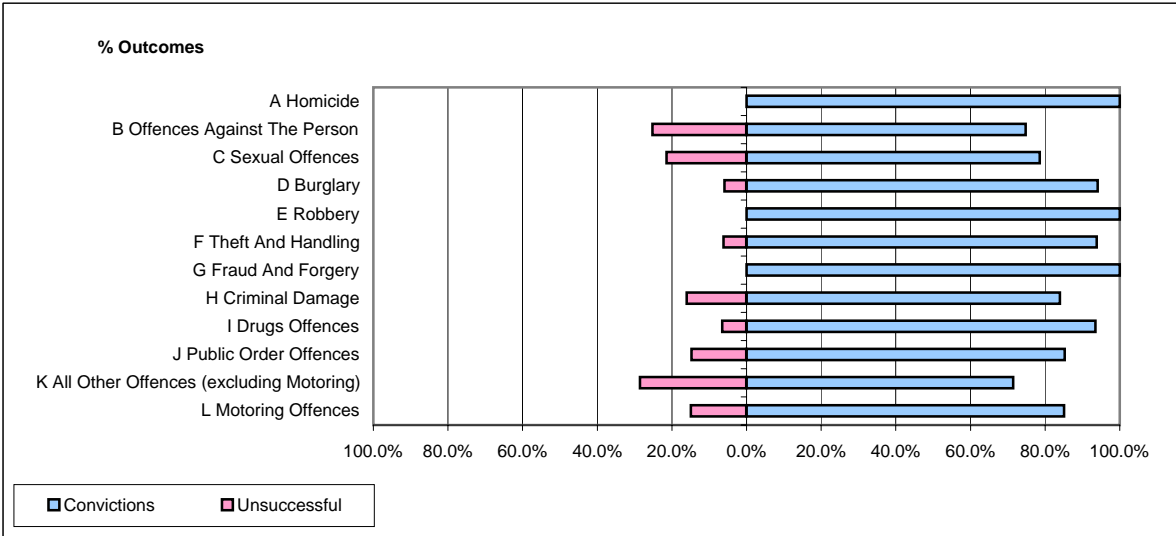


CPS OUTCOMES BY PRINCIPAL OFFENCE CATEGORY

December 2006

P06-Cleveland



	Convictions		Unsuccessful	
	Number of Defendants	%	Number of Defendants	%
A Homicide	1	100.0%	0	0.0%
B Offences Against The Person	80	74.8%	27	25.2%
C Sexual Offences	11	78.6%	3	21.4%
D Burglary	32	94.1%	2	5.9%
E Robbery	7	100.0%	0	0.0%
F Theft And Handling	151	93.8%	10	6.2%
G Fraud And Forgery	3	100.0%	0	0.0%
H Criminal Damage	42	84.0%	8	16.0%
I Drugs Offences	43	93.5%	3	6.5%
J Public Order Offences	75	85.2%	13	14.8%
K All Other Offences (excluding Motoring)	30	71.4%	12	28.6%
L Motoring Offences	194	85.1%	34	14.9%
Admin Finalisations	0	0.0%	18	100.0%
TOTAL	669	83.7%	130	16.3%