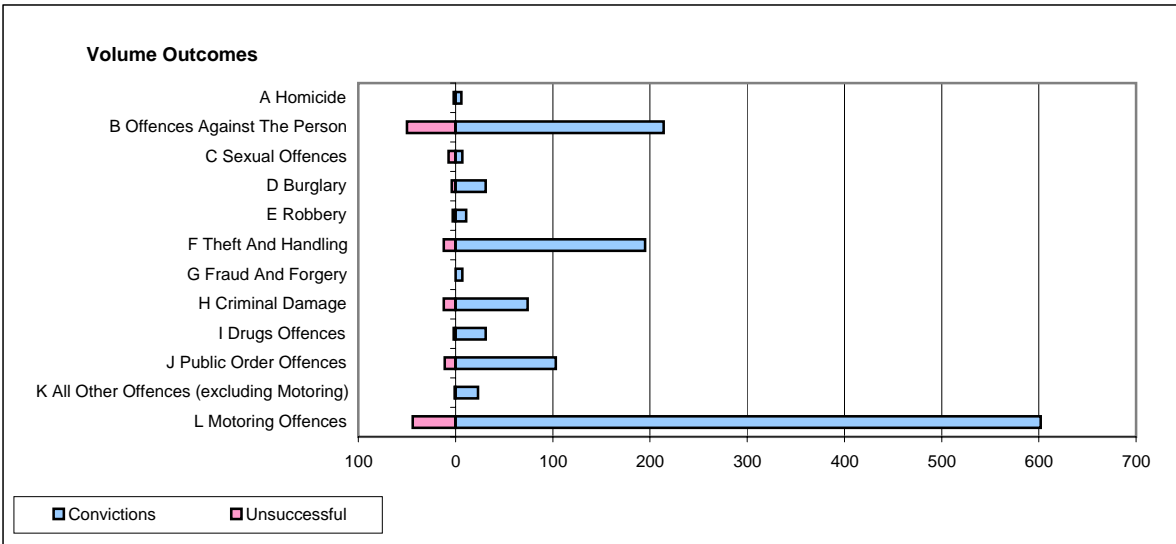
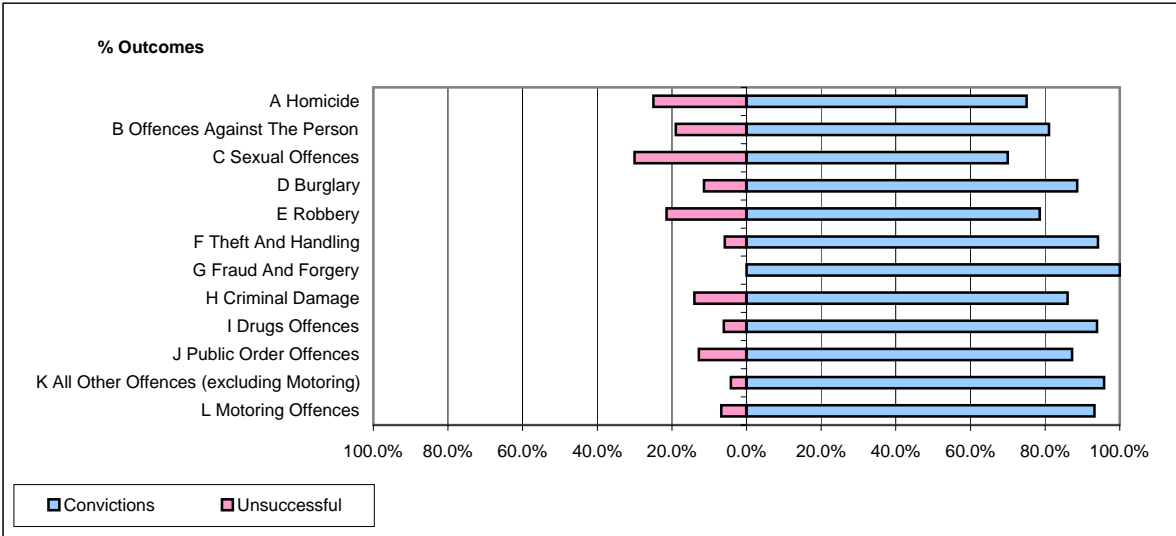


**CPS OUTCOMES BY PRINCIPAL OFFENCE CATEGORY**

December 2006

**P04-Cheshire**



	Convictions		Unsuccessful	
	Number of Defendants	%	Number of Defendants	%
<b>A Homicide</b>	6	75.0%	2	25.0%
<b>B Offences Against The Person</b>	214	81.1%	50	18.9%
<b>C Sexual Offences</b>	7	70.0%	7	30.0%
<b>D Burglary</b>	31	88.6%	4	11.4%
<b>E Robbery</b>	11	78.6%	3	21.4%
<b>F Theft And Handling</b>	195	94.2%	12	5.8%
<b>G Fraud And Forgery</b>	7	100.0%	0	0.0%
<b>H Criminal Damage</b>	74	86.0%	12	14.0%
<b>I Drugs Offences</b>	31	93.9%	2	6.1%
<b>J Public Order Offences</b>	103	87.2%	11	12.8%
<b>K All Other Offences (excluding Motoring)</b>	23	95.8%	1	4.2%
<b>L Motoring Offences</b>	602	93.2%	44	6.8%
<b>Admin Finalisations</b>	0	0.0%	18	100.0%
<b>TOTAL</b>	1,304	88.7%	166	11.3%