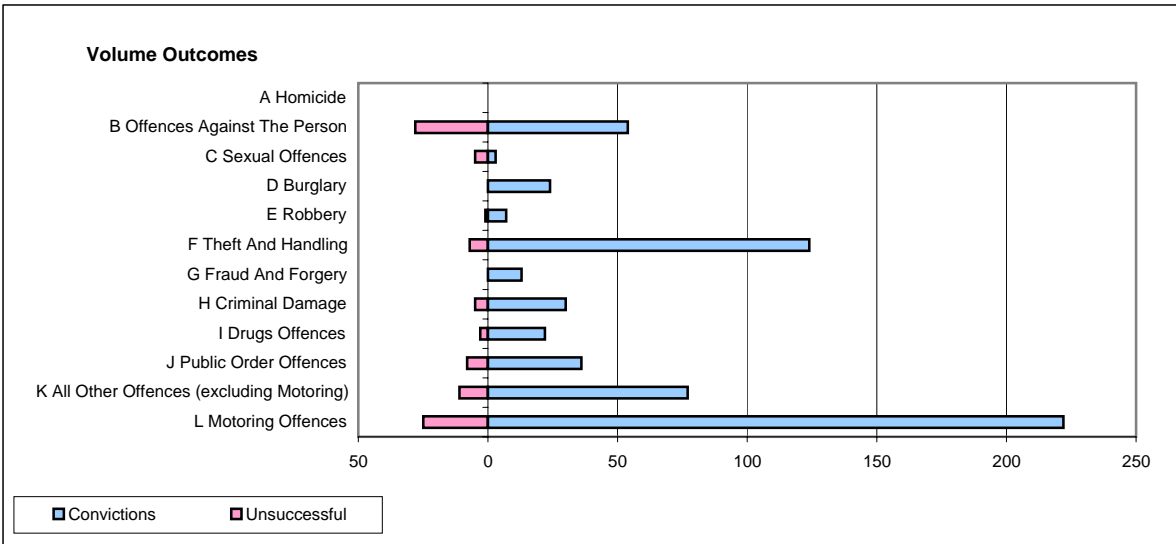
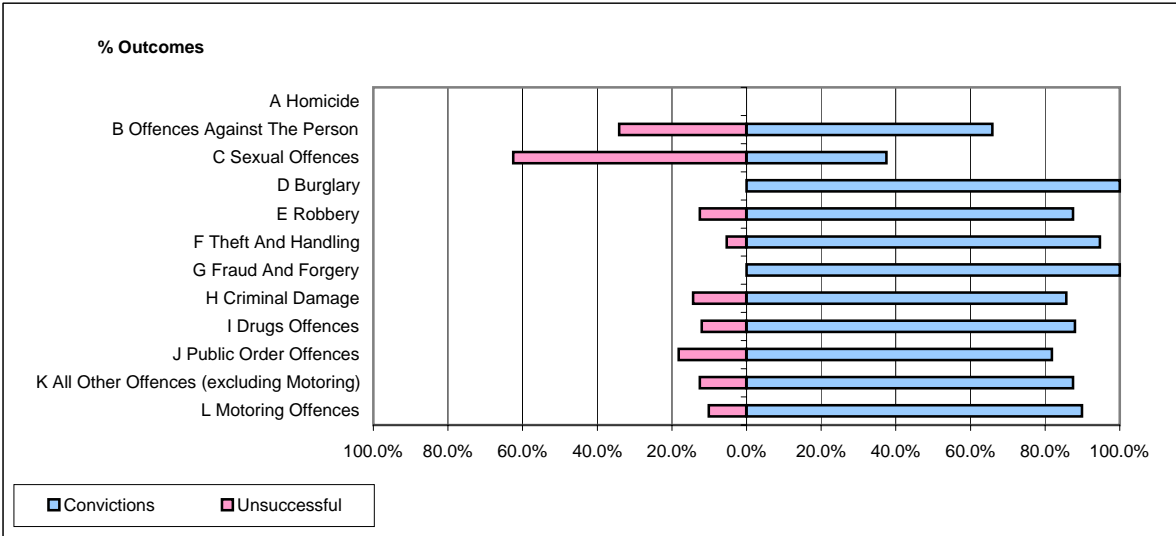


CPS OUTCOMES BY PRINCIPAL OFFENCE CATEGORY

December 2006

P02-Bedfordshire



	Convictions		Unsuccessful	
	Number of Defendants	%	Number of Defendants	%
A Homicide	0	#DIV/0!	0	#DIV/0!
B Offences Against The Person	54	65.9%	28	34.1%
C Sexual Offences	3	37.5%	5	62.5%
D Burglary	24	100.0%	0	0.0%
E Robbery	7	87.5%	1	12.5%
F Theft And Handling	124	94.7%	7	5.3%
G Fraud And Forgery	13	100.0%	0	0.0%
H Criminal Damage	30	85.7%	5	14.3%
I Drugs Offences	22	88.0%	3	12.0%
J Public Order Offences	36	81.8%	8	18.2%
K All Other Offences (excluding Motoring)	77	87.5%	11	12.5%
L Motoring Offences	222	89.9%	25	10.1%
Admin Finalisations	0	0.0%	16	100.0%
TOTAL	612	84.9%	109	15.1%