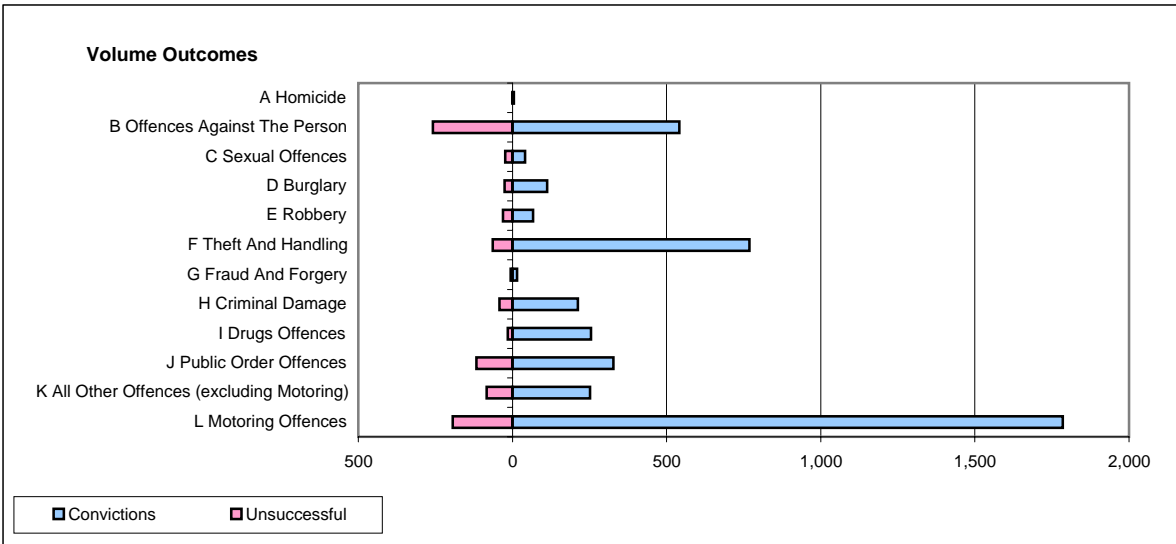
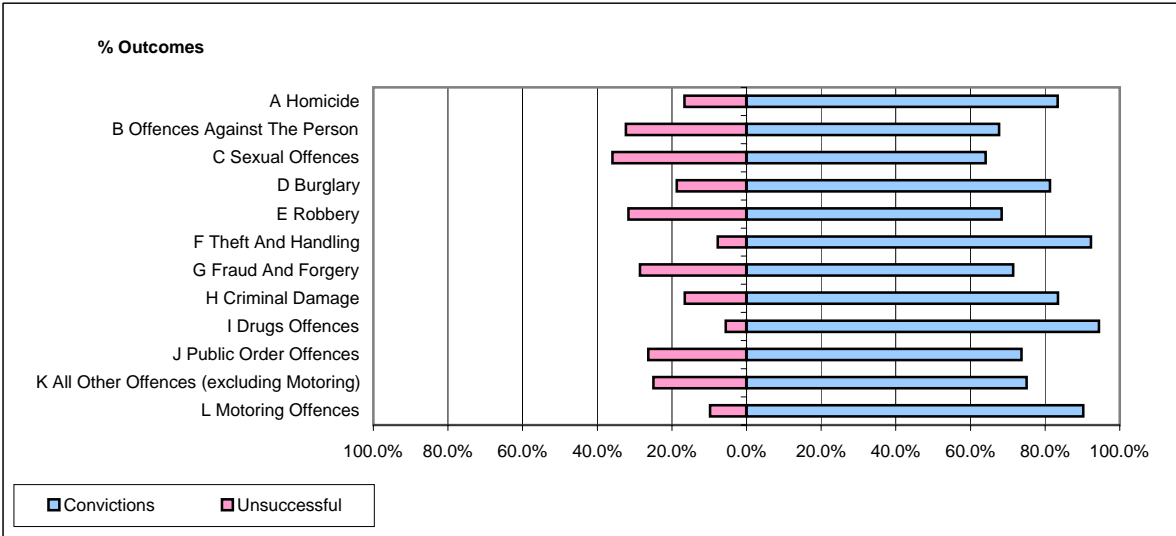


CPS OUTCOMES BY PRINCIPAL OFFENCE CATEGORY

November 2006

P41-WestMidlands



	Convictions		Unsuccessful	
	Number of Defendants	%	Number of Defendants	%
A Homicide	5	83.3%	1	16.7%
B Offences Against The Person	541	67.7%	258	32.3%
C Sexual Offences	41	64.1%	23	35.9%
D Burglary	113	81.3%	26	18.7%
E Robbery	67	68.4%	31	31.6%
F Theft And Handling	769	92.3%	64	7.7%
G Fraud And Forgery	15	71.4%	6	28.6%
H Criminal Damage	212	83.5%	42	16.5%
I Drugs Offences	255	94.4%	15	5.6%
J Public Order Offences	327	73.6%	117	26.4%
K All Other Offences (excluding Motoring)	252	75.0%	84	25.0%
L Motoring Offences	1,785	90.2%	194	9.8%
Admin Finalisations	0	0.0%	81	100.0%
TOTAL	4,382	82.3%	942	17.7%