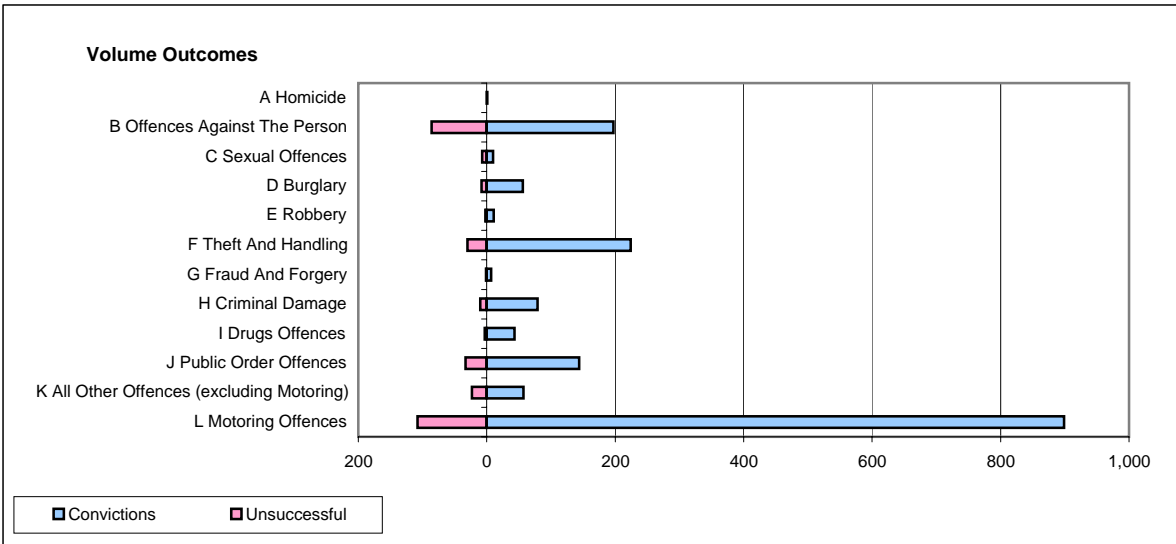
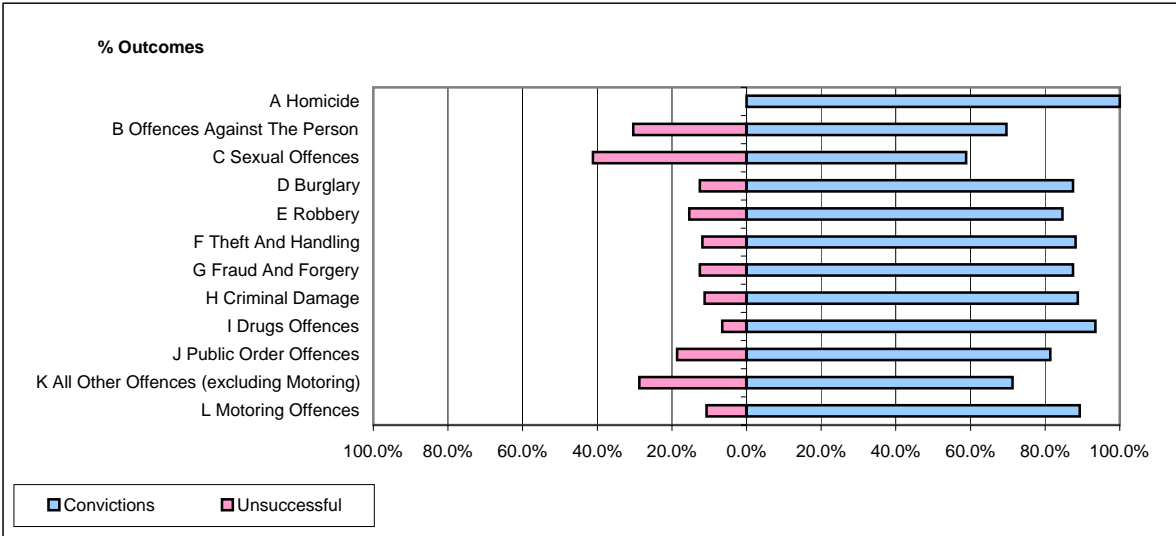


CPS OUTCOMES BY PRINCIPAL OFFENCE CATEGORY

November 2006

P40-WestMercia



	Convictions		Unsuccessful	
	Number of Defendants	%	Number of Defendants	%
A Homicide	1	100.0%	0	0.0%
B Offences Against The Person	197	69.6%	86	30.4%
C Sexual Offences	10	58.8%	7	41.2%
D Burglary	56	87.5%	8	12.5%
E Robbery	11	84.6%	2	15.4%
F Theft And Handling	224	88.2%	30	11.8%
G Fraud And Forgery	7	87.5%	1	12.5%
H Criminal Damage	79	88.8%	10	11.2%
I Drugs Offences	43	93.5%	3	6.5%
J Public Order Offences	144	81.4%	33	18.6%
K All Other Offences (excluding Motoring)	57	71.3%	23	28.8%
L Motoring Offences	899	89.3%	108	10.7%
Admin Finalisations	0	0.0%	27	100.0%
TOTAL	1,728	83.6%	338	16.4%