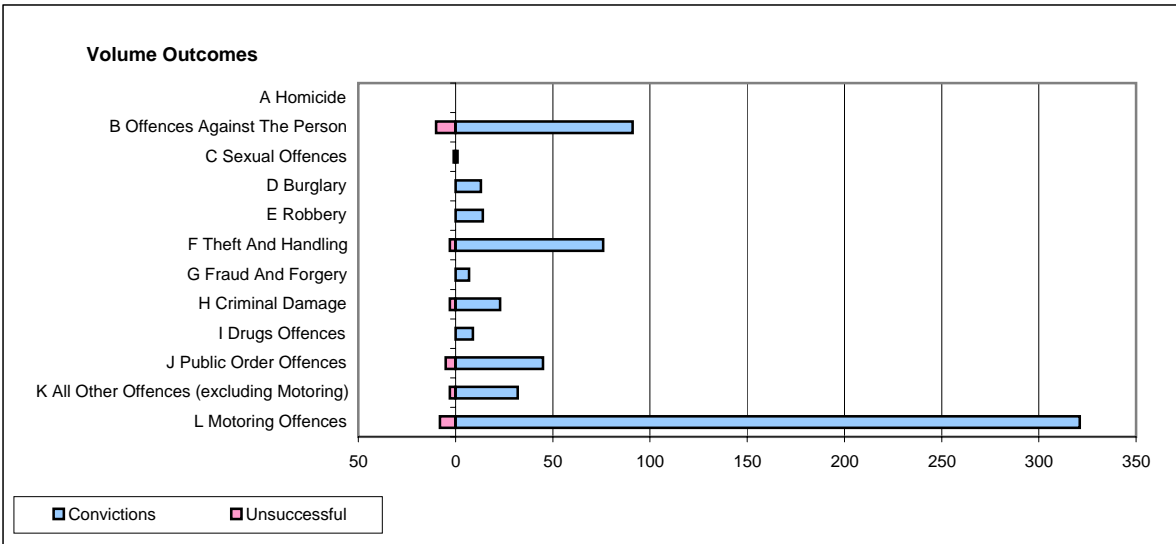
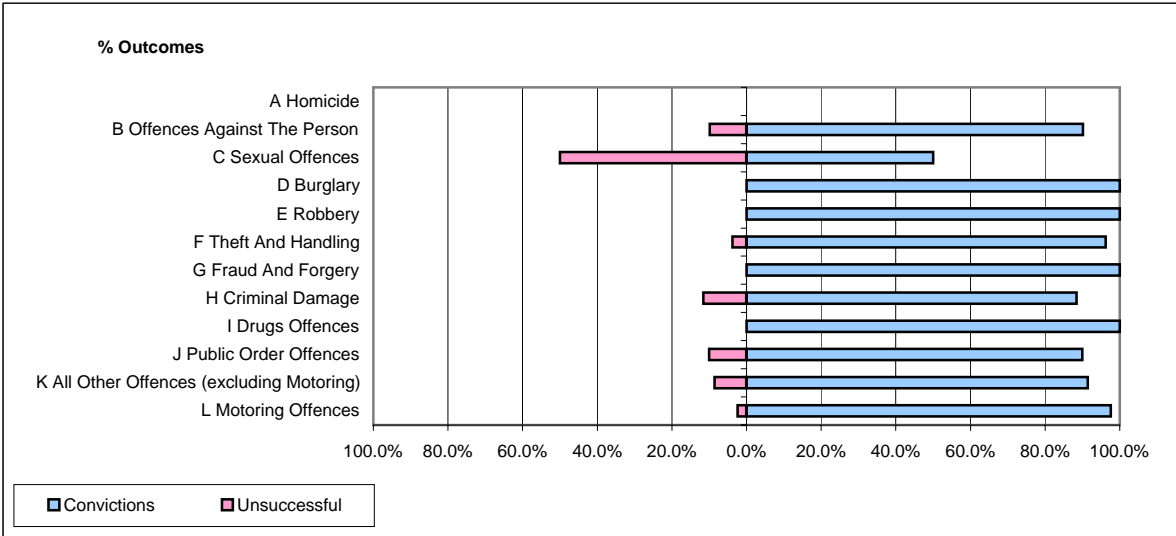


CPS OUTCOMES BY PRINCIPAL OFFENCE CATEGORY

November 2006

P39-Warwickshire



	Convictions		Unsuccessful	
	Number of Defendants	%	Number of Defendants	%
A Homicide	0	#DIV/0!	0	#DIV/0!
B Offences Against The Person	91	90.1%	10	9.9%
C Sexual Offences	1	50.0%	1	50.0%
D Burglary	13	100.0%	0	0.0%
E Robbery	14	100.0%	0	0.0%
F Theft And Handling	76	96.2%	3	3.8%
G Fraud And Forgery	7	100.0%	0	0.0%
H Criminal Damage	23	88.5%	3	11.5%
I Drugs Offences	9	100.0%	0	0.0%
J Public Order Offences	45	90.0%	5	10.0%
K All Other Offences (excluding Motoring)	32	91.4%	3	8.6%
L Motoring Offences	321	97.6%	8	2.4%
Admin Finalisations	0	0.0%	16	100.0%
TOTAL	632	92.8%	49	7.2%