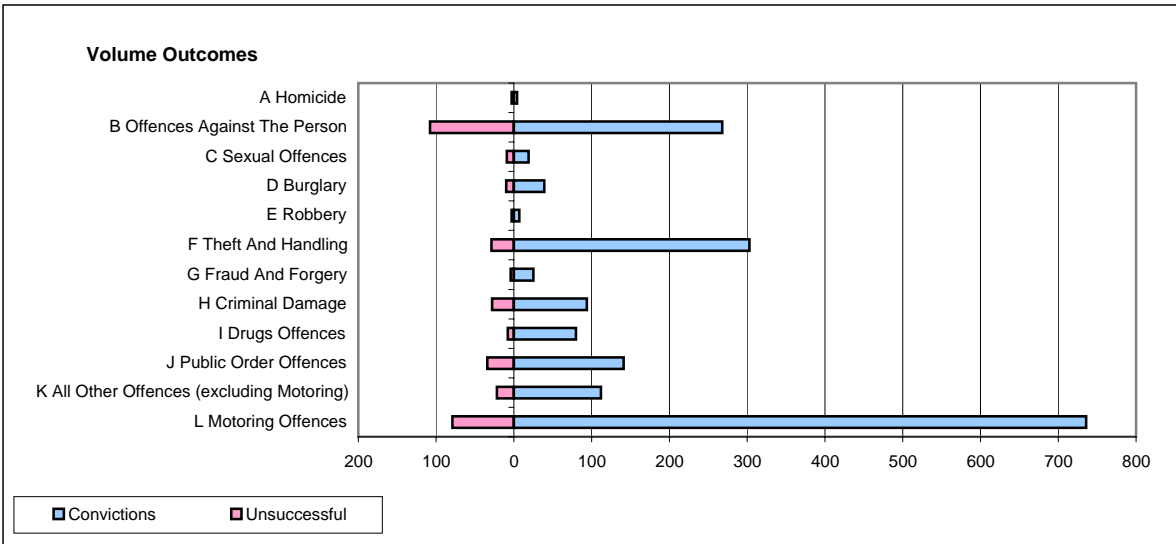
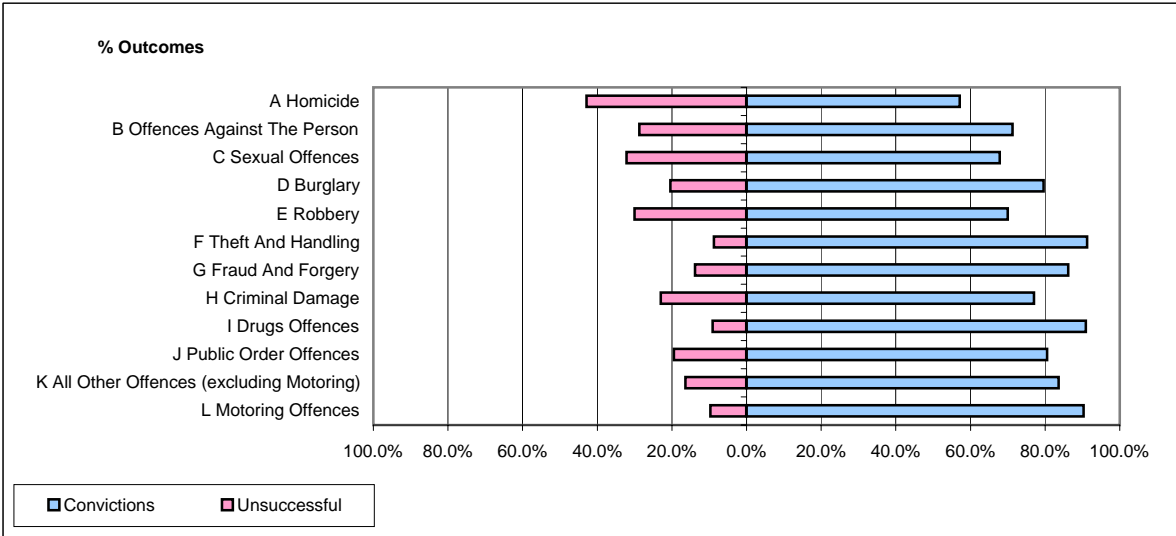


CPS OUTCOMES BY PRINCIPAL OFFENCE CATEGORY

November 2006

P37-Sussex



	Convictions		Unsuccessful	
	Number of Defendants	%	Number of Defendants	%
A Homicide	4	57.1%	3	42.9%
B Offences Against The Person	268	71.3%	108	28.7%
C Sexual Offences	19	67.9%	9	32.1%
D Burglary	39	79.6%	10	20.4%
E Robbery	7	70.0%	3	30.0%
F Theft And Handling	303	91.3%	29	8.7%
G Fraud And Forgery	25	86.2%	4	13.8%
H Criminal Damage	94	77.0%	28	23.0%
I Drugs Offences	80	90.9%	8	9.1%
J Public Order Offences	141	80.6%	34	19.4%
K All Other Offences (excluding Motoring)	112	83.6%	22	16.4%
L Motoring Offences	736	90.3%	79	9.7%
Admin Finalisations	0	0.0%	65	100.0%
TOTAL	1,828	82.0%	402	18.0%