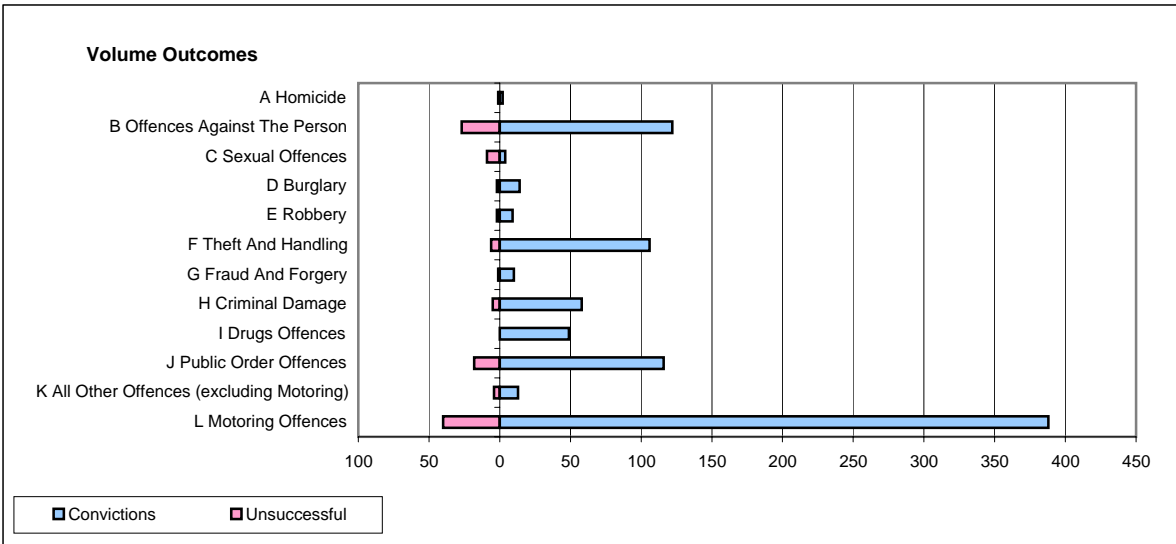
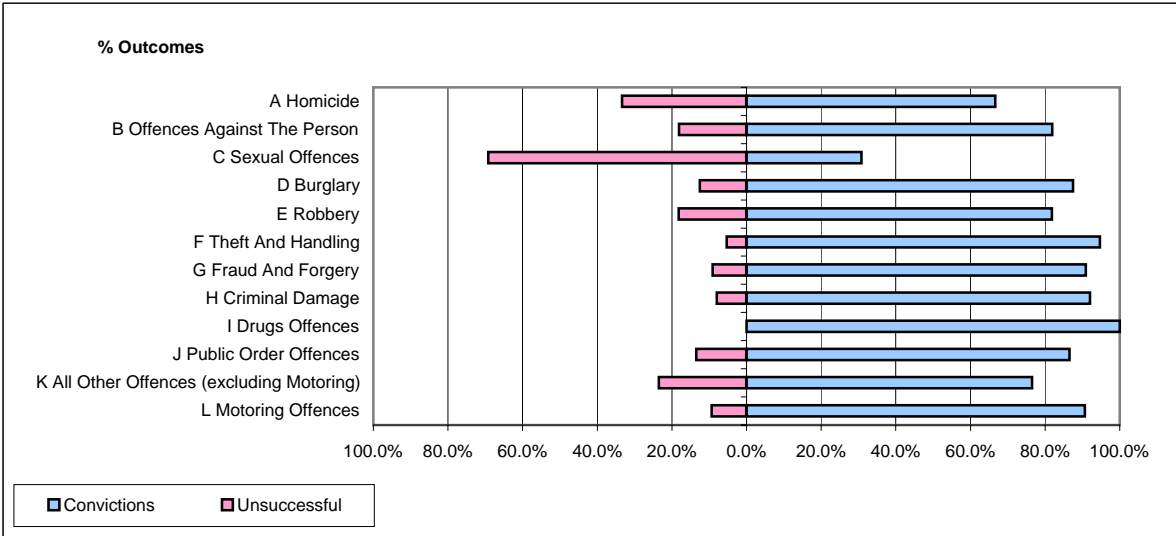


CPS OUTCOMES BY PRINCIPAL OFFENCE CATEGORY

November 2006

P35-Suffolk



	Convictions		Unsuccessful	
	Number of Defendants	%	Number of Defendants	%
A Homicide	2	66.7%	1	33.3%
B Offences Against The Person	122	81.9%	27	18.1%
C Sexual Offences	4	30.8%	9	69.2%
D Burglary	14	87.5%	2	12.5%
E Robbery	9	81.8%	2	18.2%
F Theft And Handling	106	94.6%	6	5.4%
G Fraud And Forgery	10	90.9%	1	9.1%
H Criminal Damage	58	92.1%	5	7.9%
I Drugs Offences	49	100.0%	0	0.0%
J Public Order Offences	116	86.6%	18	13.4%
K All Other Offences (excluding Motoring)	13	76.5%	4	23.5%
L Motoring Offences	388	90.7%	40	9.3%
Admin Finalisations	0	0.0%	17	100.0%
TOTAL	891	87.1%	132	12.9%