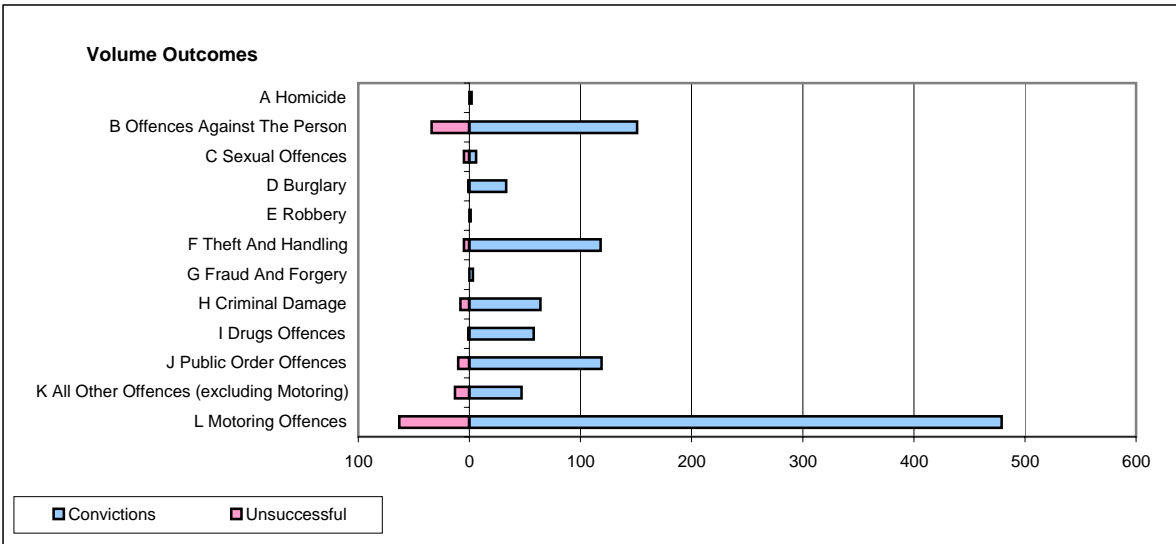
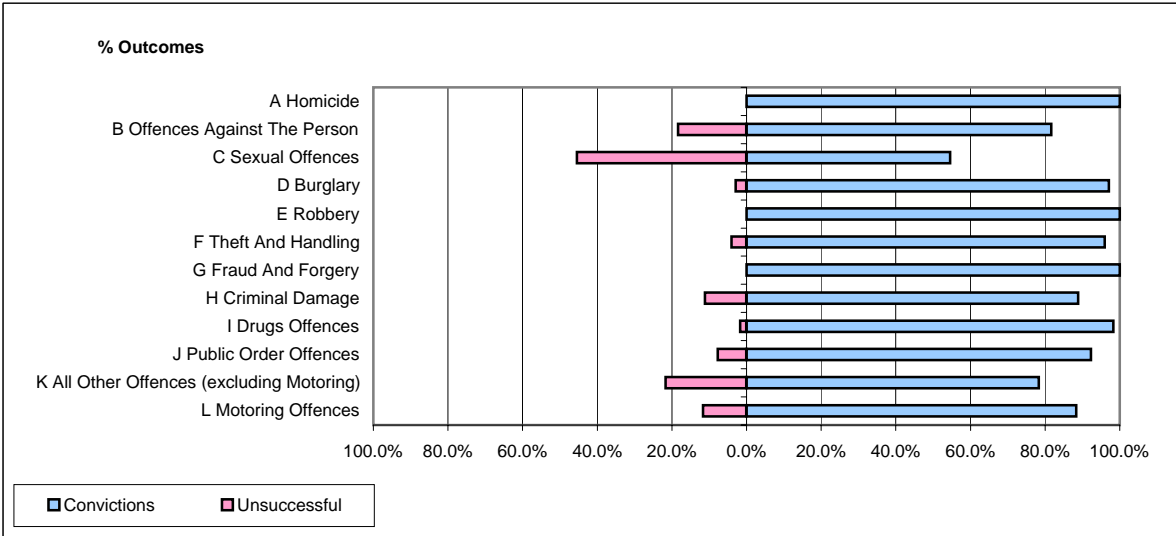


CPS OUTCOMES BY PRINCIPAL OFFENCE CATEGORY

November 2006

P29-NorthWales



	Convictions		Unsuccessful	
	Number of Defendants	%	Number of Defendants	%
A Homicide	2	100.0%	0	0.0%
B Offences Against The Person	151	81.6%	34	18.4%
C Sexual Offences	6	54.5%	5	45.5%
D Burglary	33	97.1%	1	2.9%
E Robbery	1	100.0%	0	0.0%
F Theft And Handling	118	95.9%	5	4.1%
G Fraud And Forgery	3	100.0%	0	0.0%
H Criminal Damage	64	88.9%	8	11.1%
I Drugs Offences	58	98.3%	1	1.7%
J Public Order Offences	119	92.2%	10	7.8%
K All Other Offences (excluding Motoring)	47	78.3%	13	21.7%
L Motoring Offences	479	88.4%	63	11.6%
Admin Finalisations	0	0.0%	13	100.0%
TOTAL	1,081	87.6%	153	12.4%