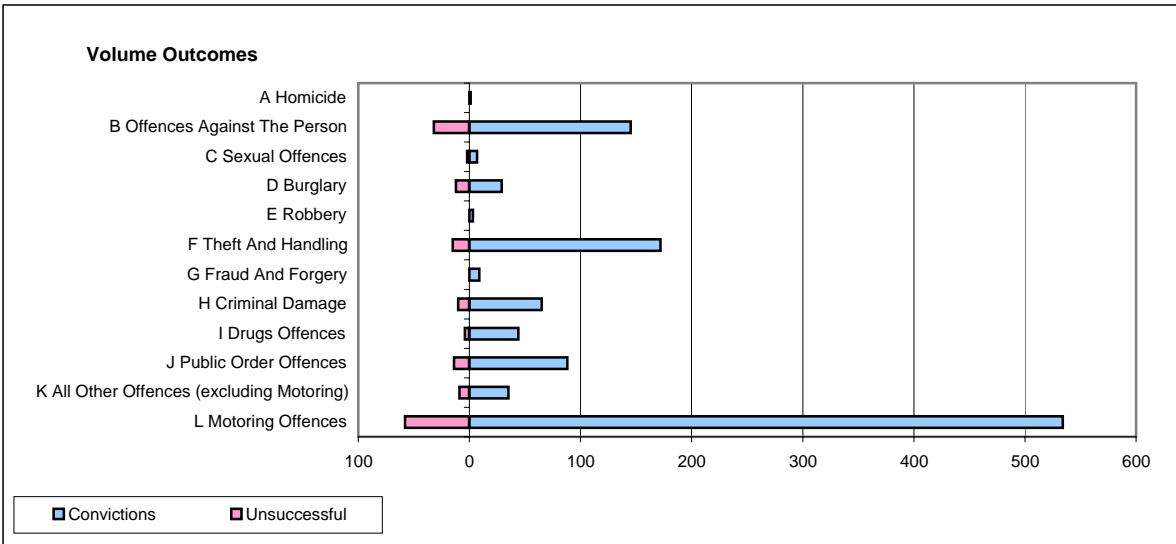
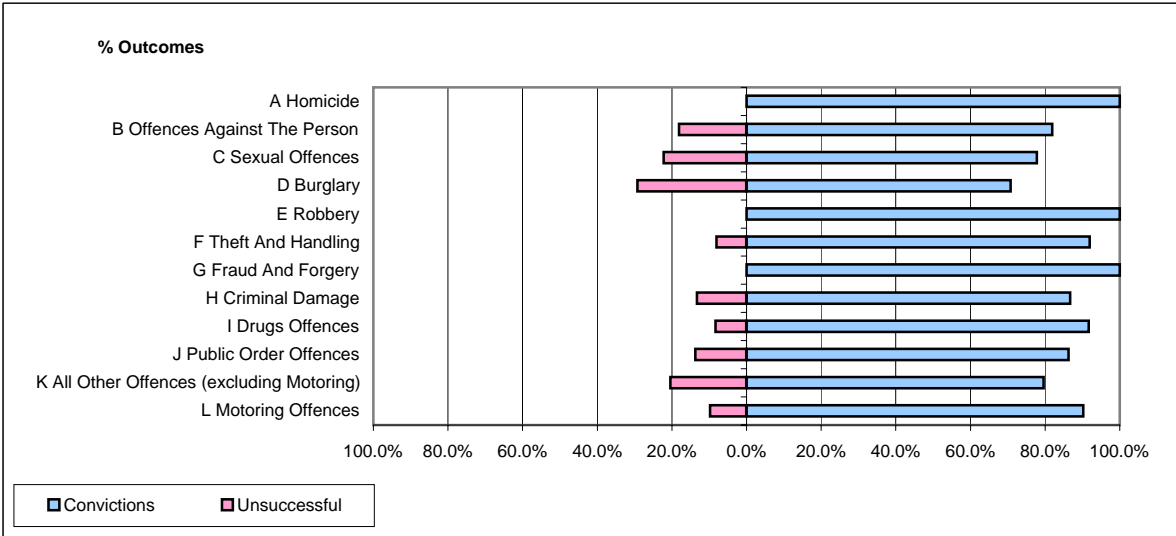


CPS OUTCOMES BY PRINCIPAL OFFENCE CATEGORY

November 2006

P26-Norfolk



	Convictions		Unsuccessful	
	Number of Defendants	%	Number of Defendants	%
A Homicide	1	100.0%	0	0.0%
B Offences Against The Person	145	81.9%	32	18.1%
C Sexual Offences	7	77.8%	2	22.2%
D Burglary	29	70.7%	12	29.3%
E Robbery	3	100.0%	0	0.0%
F Theft And Handling	172	92.0%	15	8.0%
G Fraud And Forgery	9	100.0%	0	0.0%
H Criminal Damage	65	86.7%	10	13.3%
I Drugs Offences	44	91.7%	4	8.3%
J Public Order Offences	88	86.3%	14	13.7%
K All Other Offences (excluding Motoring)	35	79.5%	9	20.5%
L Motoring Offences	534	90.2%	58	9.8%
Admin Finalisations	0	0.0%	33	100.0%
TOTAL	1,132	85.7%	189	14.3%