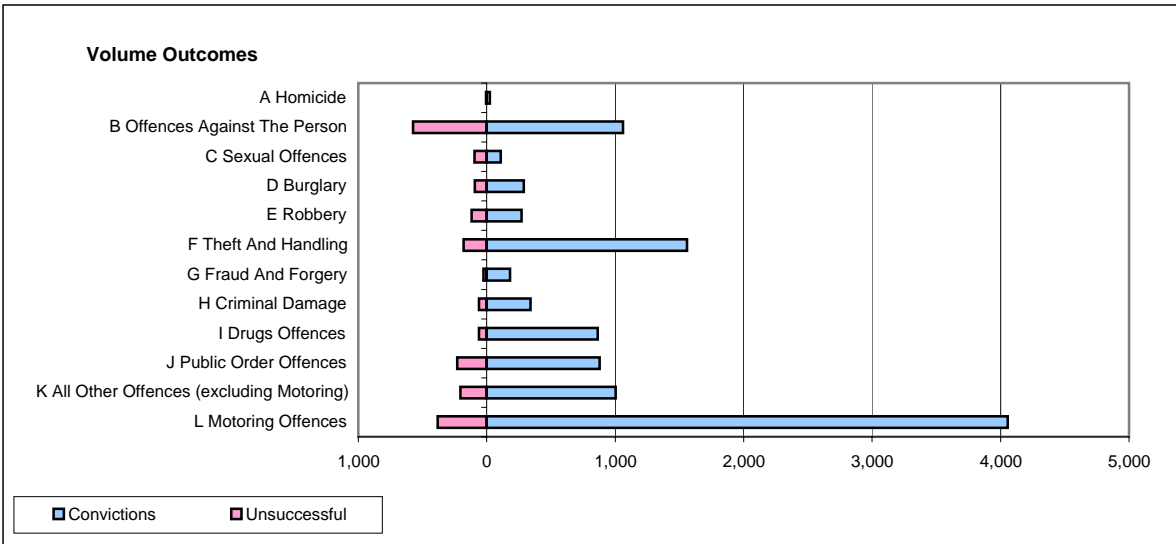
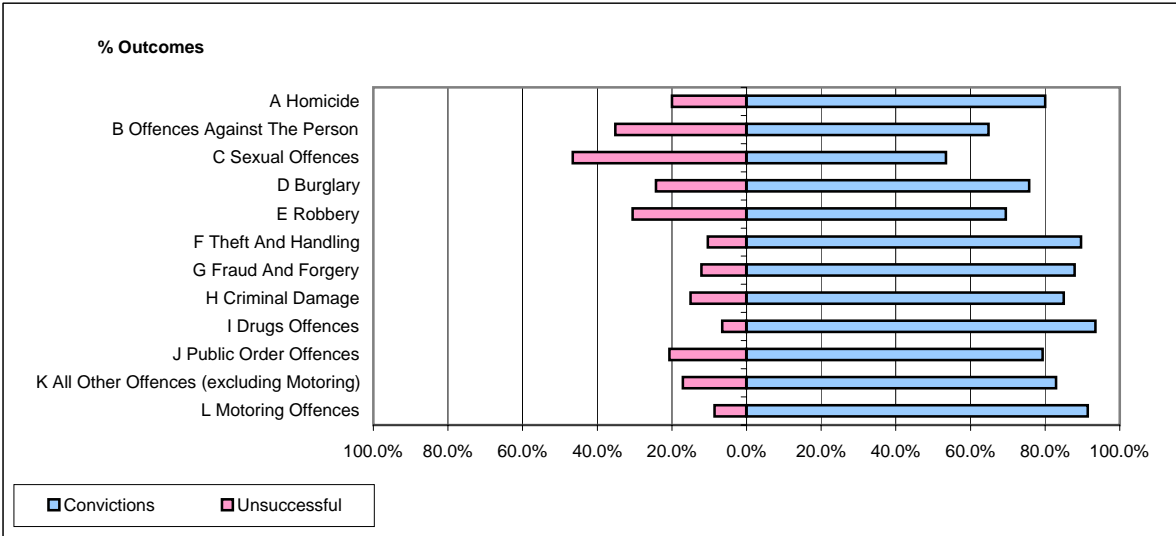


**CPS OUTCOMES BY PRINCIPAL OFFENCE CATEGORY**

**November 2006**

**P25-Metropolitan&City**



	Convictions		Unsuccessful	
	Number of Defendants	%	Number of Defendants	%
<b>A Homicide</b>	<b>24</b>	<b>80.0%</b>	<b>6</b>	<b>20.0%</b>
<b>B Offences Against The Person</b>	<b>1,060</b>	<b>64.8%</b>	<b>575</b>	<b>35.2%</b>
<b>C Sexual Offences</b>	<b>109</b>	<b>53.4%</b>	<b>95</b>	<b>46.6%</b>
<b>D Burglary</b>	<b>287</b>	<b>75.7%</b>	<b>92</b>	<b>24.3%</b>
<b>E Robbery</b>	<b>271</b>	<b>69.5%</b>	<b>119</b>	<b>30.5%</b>
<b>F Theft And Handling</b>	<b>1,558</b>	<b>89.6%</b>	<b>180</b>	<b>10.4%</b>
<b>G Fraud And Forgery</b>	<b>182</b>	<b>87.9%</b>	<b>25</b>	<b>12.1%</b>
<b>H Criminal Damage</b>	<b>340</b>	<b>85.0%</b>	<b>60</b>	<b>15.0%</b>
<b>I Drugs Offences</b>	<b>864</b>	<b>93.5%</b>	<b>60</b>	<b>6.5%</b>
<b>J Public Order Offences</b>	<b>879</b>	<b>79.3%</b>	<b>229</b>	<b>20.7%</b>
<b>K All Other Offences (excluding Motoring)</b>	<b>1,003</b>	<b>83.0%</b>	<b>206</b>	<b>17.0%</b>
<b>L Motoring Offences</b>	<b>4,055</b>	<b>91.4%</b>	<b>381</b>	<b>8.6%</b>
<b>Admin Finalisations</b>	<b>0</b>	<b>0.0%</b>	<b>514</b>	<b>100.0%</b>
<b>TOTAL</b>	<b>10,632</b>	<b>80.7%</b>	<b>2,542</b>	<b>19.3%</b>