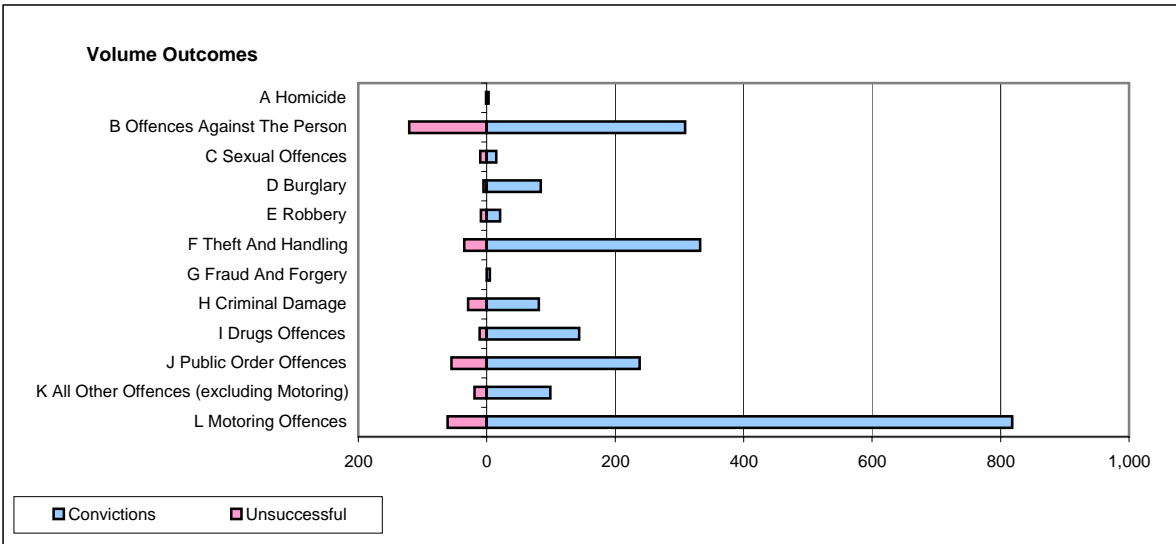
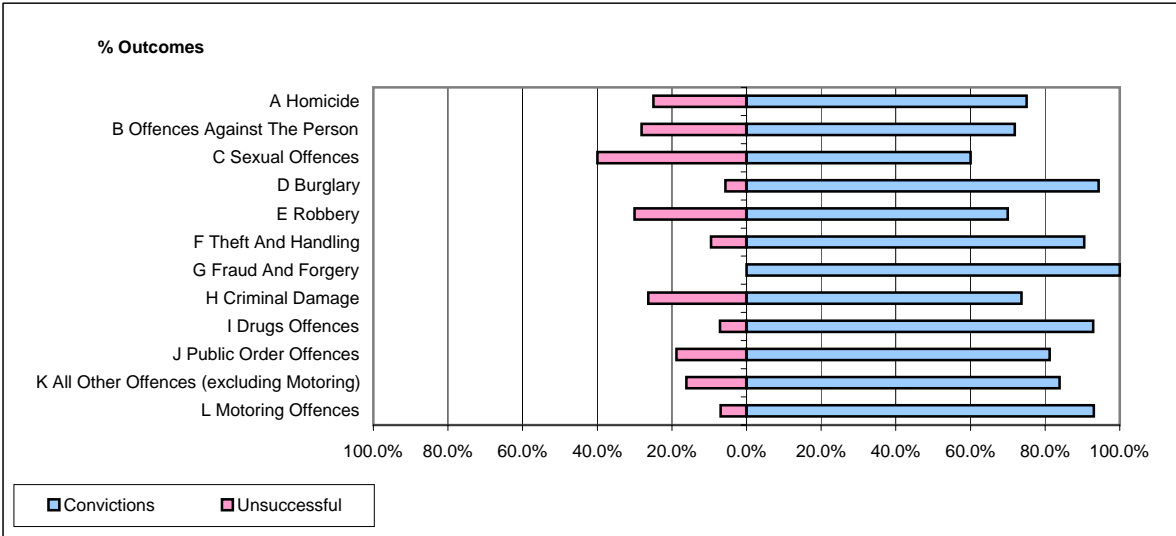


**CPS OUTCOMES BY PRINCIPAL OFFENCE CATEGORY**

**November 2006**

**P24-Merseyside**



	Convictions		Unsuccessful	
	Number of Defendants	%	Number of Defendants	%
<b>A Homicide</b>	<b>3</b>	<b>75.0%</b>	<b>1</b>	<b>25.0%</b>
<b>B Offences Against The Person</b>	<b>309</b>	<b>71.9%</b>	<b>121</b>	<b>28.1%</b>
<b>C Sexual Offences</b>	<b>15</b>	<b>60.0%</b>	<b>10</b>	<b>40.0%</b>
<b>D Burglary</b>	<b>84</b>	<b>94.4%</b>	<b>5</b>	<b>5.6%</b>
<b>E Robbery</b>	<b>21</b>	<b>70.0%</b>	<b>9</b>	<b>30.0%</b>
<b>F Theft And Handling</b>	<b>332</b>	<b>90.5%</b>	<b>35</b>	<b>9.5%</b>
<b>G Fraud And Forgery</b>	<b>5</b>	<b>100.0%</b>	<b>0</b>	<b>0.0%</b>
<b>H Criminal Damage</b>	<b>81</b>	<b>73.6%</b>	<b>29</b>	<b>26.4%</b>
<b>I Drugs Offences</b>	<b>144</b>	<b>92.9%</b>	<b>11</b>	<b>7.1%</b>
<b>J Public Order Offences</b>	<b>238</b>	<b>81.2%</b>	<b>55</b>	<b>18.8%</b>
<b>K All Other Offences (excluding Motoring)</b>	<b>99</b>	<b>83.9%</b>	<b>19</b>	<b>16.1%</b>
<b>L Motoring Offences</b>	<b>818</b>	<b>93.1%</b>	<b>61</b>	<b>6.9%</b>
<b>Admin Finalisations</b>	<b>0</b>	<b>0.0%</b>	<b>49</b>	<b>100.0%</b>
<b>TOTAL</b>	<b>2,149</b>	<b>84.1%</b>	<b>405</b>	<b>15.9%</b>