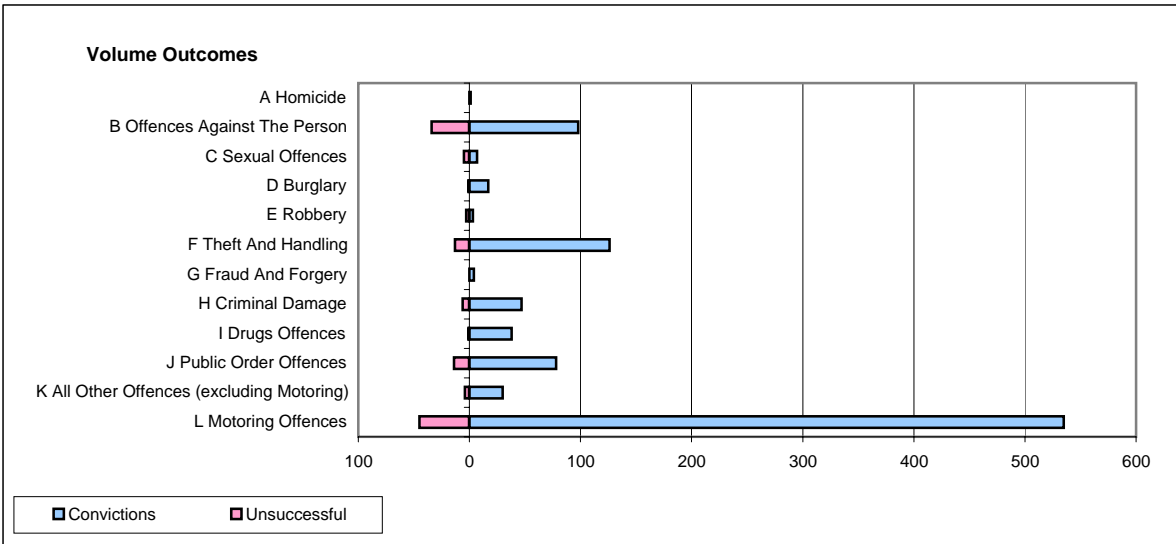
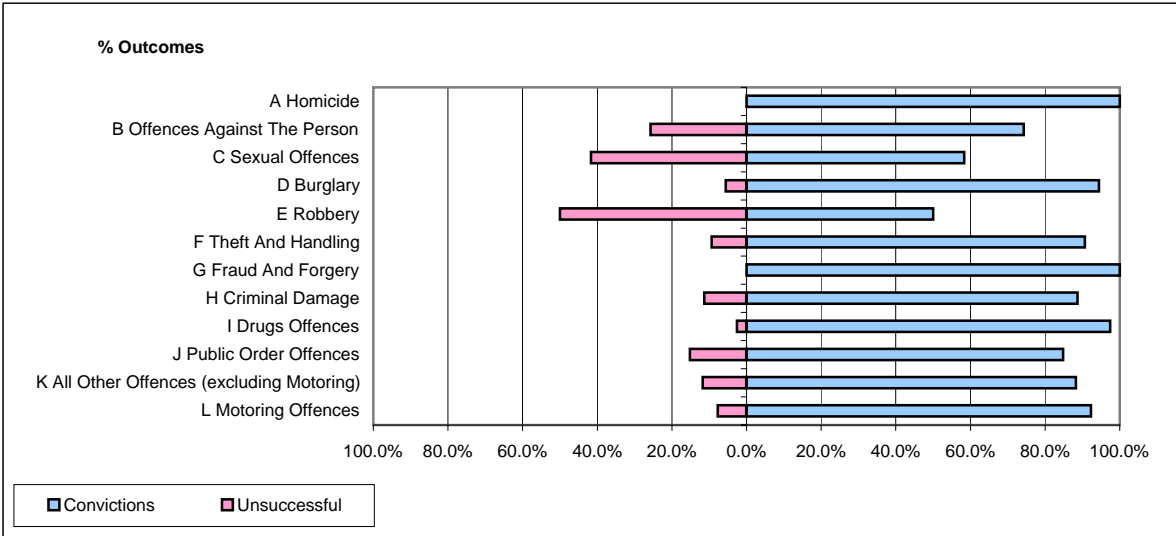


CPS OUTCOMES BY PRINCIPAL OFFENCE CATEGORY

November 2006

P23-Lincolnshire



	Convictions		Unsuccessful	
	Number of Defendants	%	Number of Defendants	%
A Homicide	1	100.0%	0	0.0%
B Offences Against The Person	98	74.2%	34	25.8%
C Sexual Offences	7	58.3%	5	41.7%
D Burglary	17	94.4%	1	5.6%
E Robbery	3	50.0%	3	50.0%
F Theft And Handling	126	90.6%	13	9.4%
G Fraud And Forgery	4	100.0%	0	0.0%
H Criminal Damage	47	88.7%	6	11.3%
I Drugs Offences	38	97.4%	1	2.6%
J Public Order Offences	78	84.8%	14	15.2%
K All Other Offences (excluding Motoring)	30	88.2%	4	11.8%
L Motoring Offences	535	92.2%	45	7.8%
Admin Finalisations	0	0.0%	19	100.0%
TOTAL	984	87.2%	145	12.8%