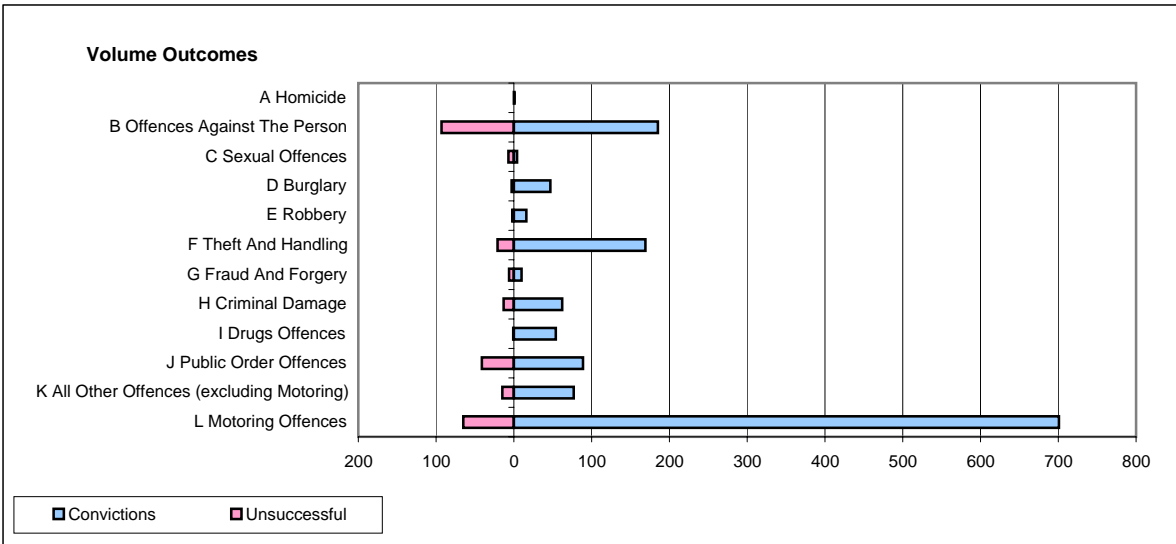
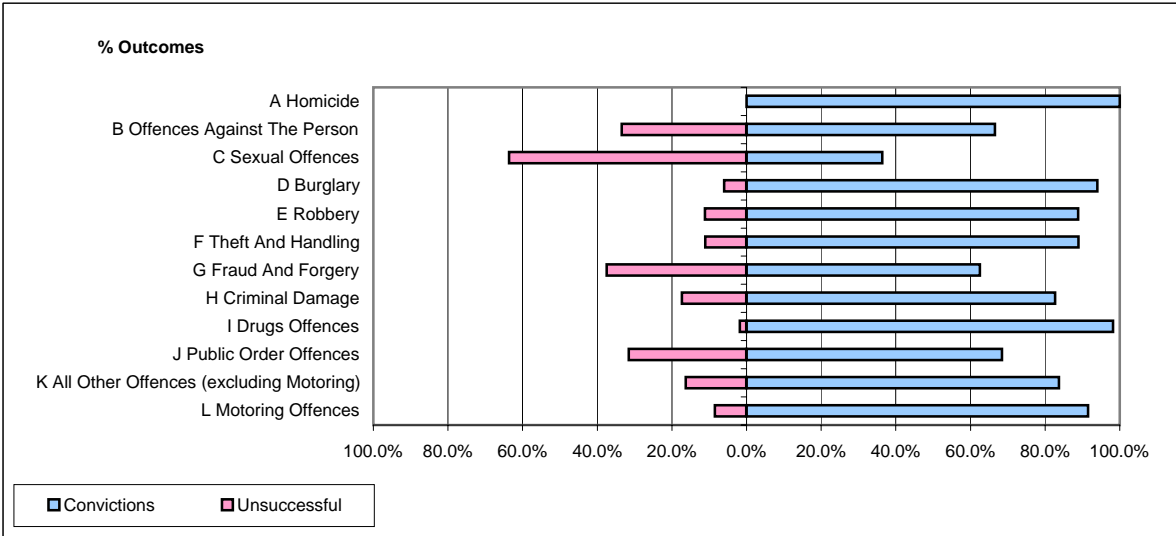


CPS OUTCOMES BY PRINCIPAL OFFENCE CATEGORY

November 2006

P22-Leicestershire



	Convictions		Unsuccessful	
	Number of Defendants	%	Number of Defendants	%
A Homicide	1	100.0%	0	0.0%
B Offences Against The Person	185	66.5%	93	33.5%
C Sexual Offences	4	36.4%	7	63.6%
D Burglary	47	94.0%	3	6.0%
E Robbery	16	88.9%	2	11.1%
F Theft And Handling	169	88.9%	21	11.1%
G Fraud And Forgery	10	62.5%	6	37.5%
H Criminal Damage	62	82.7%	13	17.3%
I Drugs Offences	54	98.2%	1	1.8%
J Public Order Offences	89	68.5%	41	31.5%
K All Other Offences (excluding Motoring)	77	83.7%	15	16.3%
L Motoring Offences	701	91.5%	65	8.5%
Admin Finalisations	0	0.0%	28	100.0%
TOTAL	1,415	82.7%	295	17.3%