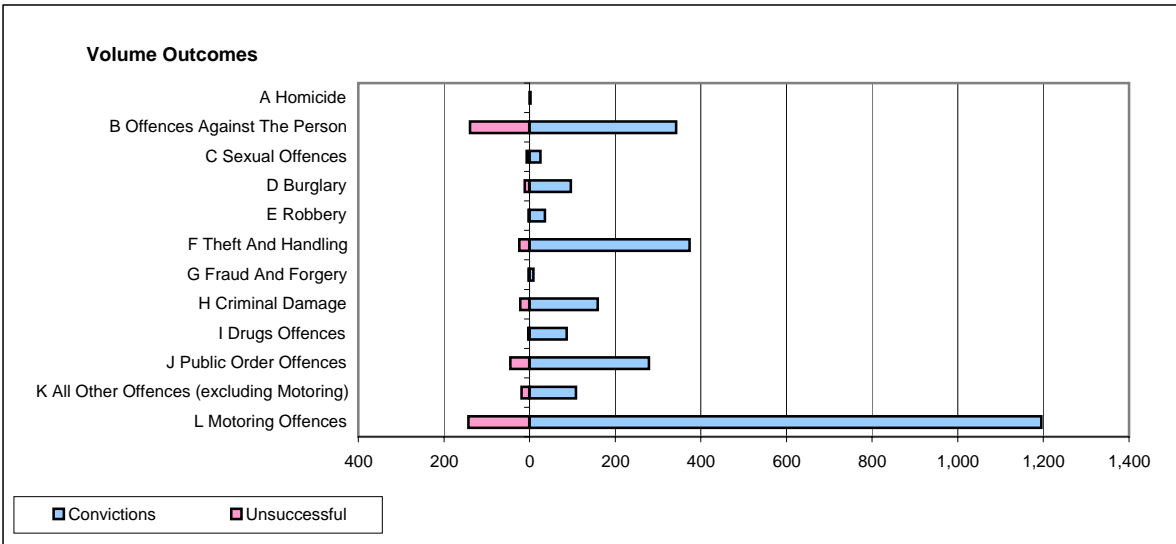
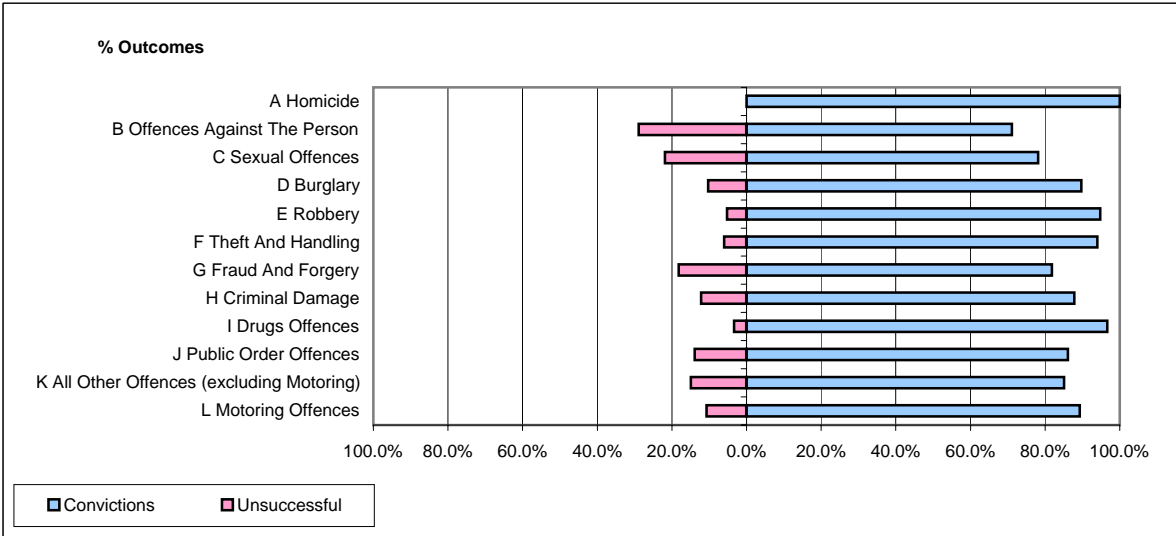


CPS OUTCOMES BY PRINCIPAL OFFENCE CATEGORY

November 2006

P21-Lancashire



	Convictions		Unsuccessful	
	Number of Defendants	%	Number of Defendants	%
A Homicide	2	100.0%	0	0.0%
B Offences Against The Person	342	71.1%	139	28.9%
C Sexual Offences	25	78.1%	7	21.9%
D Burglary	96	89.7%	11	10.3%
E Robbery	36	94.7%	2	5.3%
F Theft And Handling	374	94.0%	24	6.0%
G Fraud And Forgery	9	81.8%	2	18.2%
H Criminal Damage	159	87.8%	22	12.2%
I Drugs Offences	87	96.7%	3	3.3%
J Public Order Offences	279	86.1%	45	13.9%
K All Other Offences (excluding Motoring)	108	85.0%	19	15.0%
L Motoring Offences	1,195	89.3%	143	10.7%
Admin Finalisations	0	0.0%	45	100.0%
TOTAL	2,712	85.4%	462	14.6%