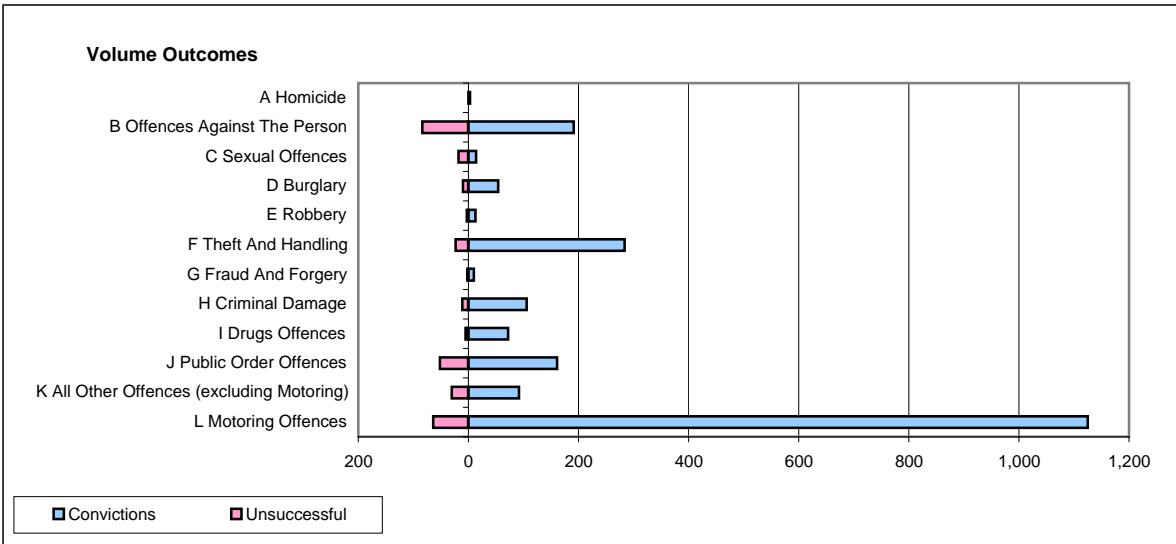
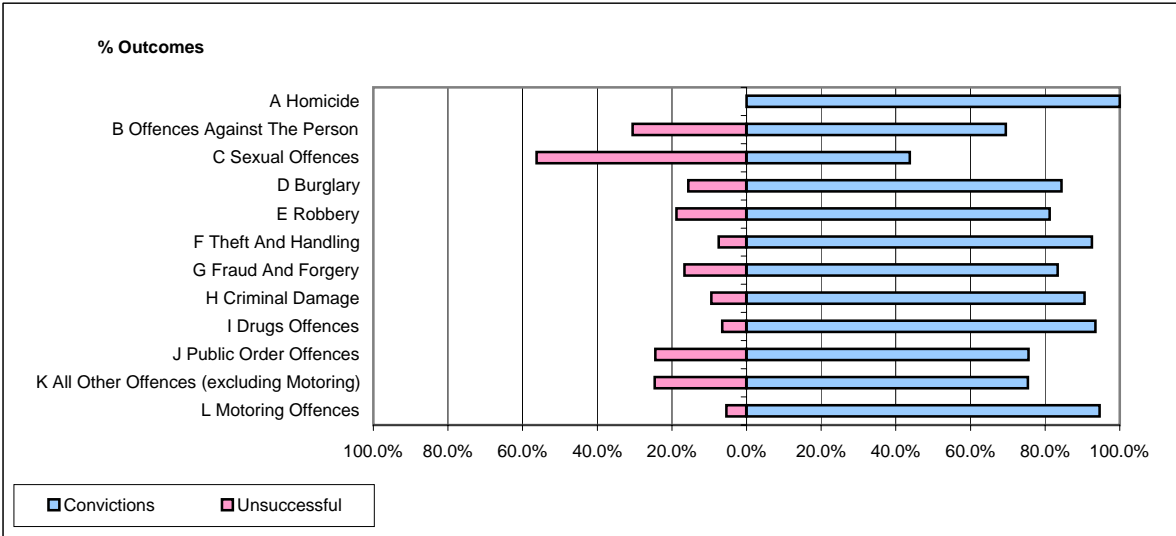


CPS OUTCOMES BY PRINCIPAL OFFENCE CATEGORY

November 2006

P20-Kent



	Convictions		Unsuccessful	
	Number of Defendants	%	Number of Defendants	%
A Homicide	3	100.0%	0	0.0%
B Offences Against The Person	191	69.5%	84	30.5%
C Sexual Offences	14	43.8%	18	56.3%
D Burglary	54	84.4%	10	15.6%
E Robbery	13	81.3%	3	18.8%
F Theft And Handling	284	92.5%	23	7.5%
G Fraud And Forgery	10	83.3%	2	16.7%
H Criminal Damage	106	90.6%	11	9.4%
I Drugs Offences	72	93.5%	5	6.5%
J Public Order Offences	161	75.6%	52	24.4%
K All Other Offences (excluding Motoring)	92	75.4%	30	24.6%
L Motoring Offences	1,125	94.6%	64	5.4%
Admin Finalisations	0	0.0%	42	100.0%
TOTAL	2,125	86.1%	344	13.9%