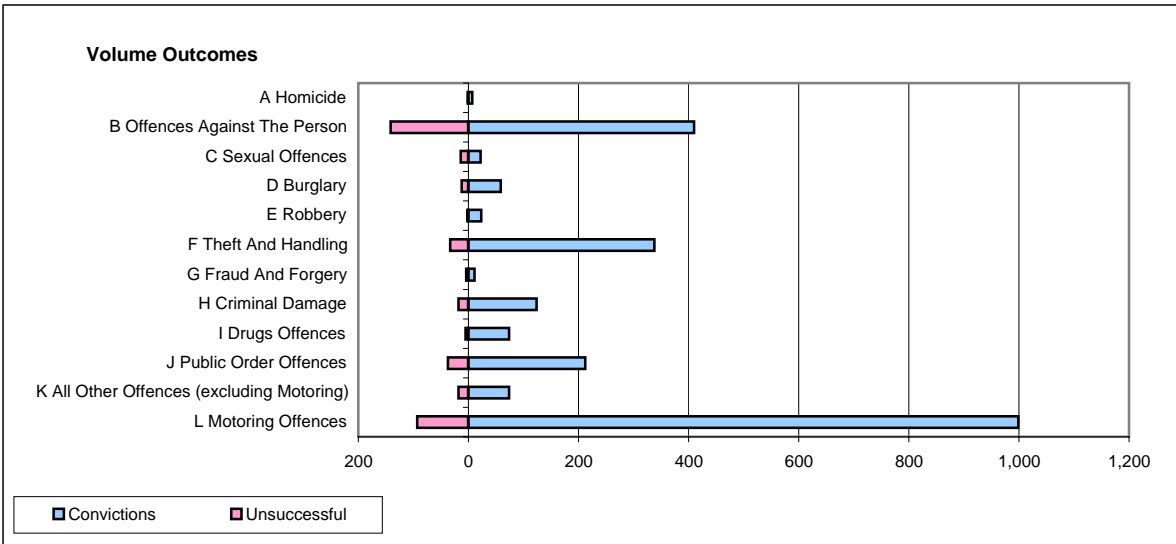
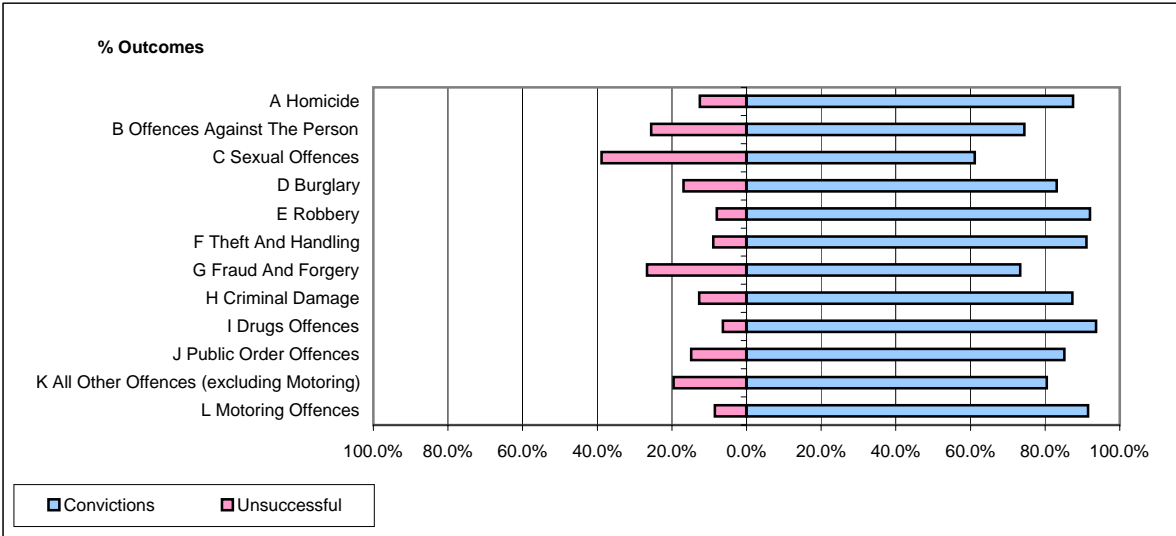


CPS OUTCOMES BY PRINCIPAL OFFENCE CATEGORY

November 2006

P17-Hampshire



	Convictions		Unsuccessful	
	Number of Defendants	%	Number of Defendants	%
A Homicide	7	87.5%	1	12.5%
B Offences Against The Person	410	74.4%	141	25.6%
C Sexual Offences	22	61.1%	14	38.9%
D Burglary	59	83.1%	12	16.9%
E Robbery	23	92.0%	2	8.0%
F Theft And Handling	338	91.1%	33	8.9%
G Fraud And Forgery	11	73.3%	4	26.7%
H Criminal Damage	124	87.3%	18	12.7%
I Drugs Offences	74	93.7%	5	6.3%
J Public Order Offences	212	85.1%	37	14.9%
K All Other Offences (excluding Motoring)	74	80.4%	18	19.6%
L Motoring Offences	999	91.5%	93	8.5%
Admin Finalisations	0	0.0%	38	100.0%
TOTAL	2,353	85.0%	416	15.0%