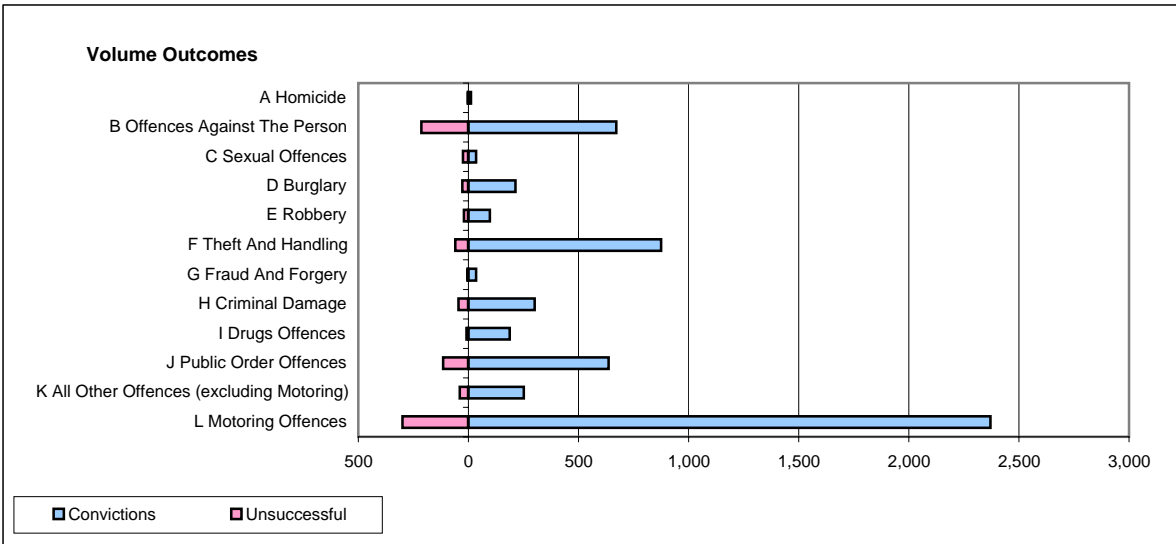
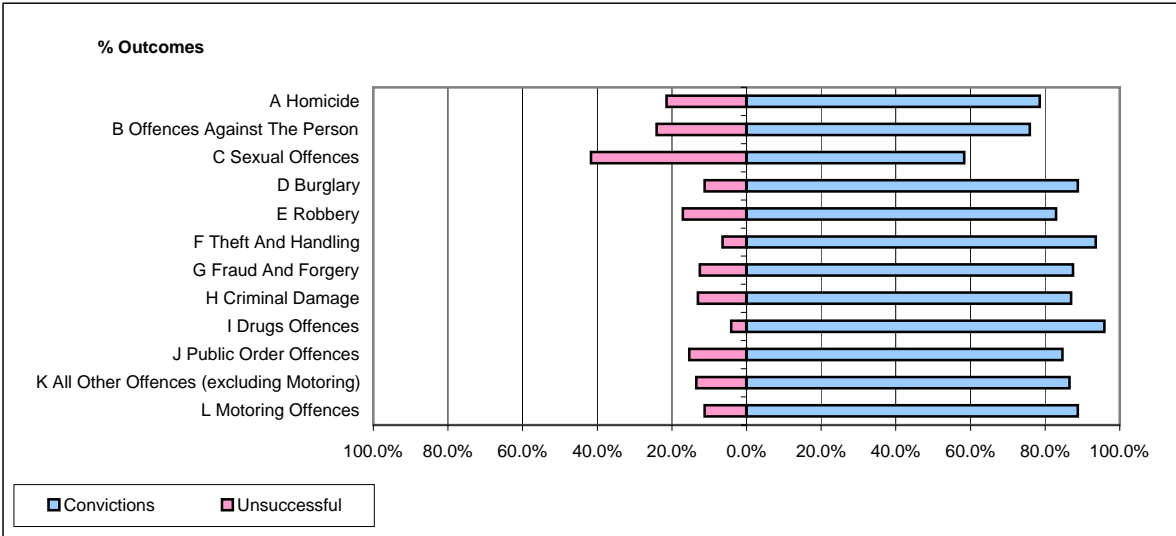


CPS OUTCOMES BY PRINCIPAL OFFENCE CATEGORY

November 2006

P15-GreaterManchester



	Convictions		Unsuccessful	
	Number of Defendants	%	Number of Defendants	%
A Homicide	11	78.6%	3	21.4%
B Offences Against The Person	671	75.9%	213	24.1%
C Sexual Offences	35	58.3%	25	41.7%
D Burglary	214	88.8%	27	11.2%
E Robbery	97	82.9%	20	17.1%
F Theft And Handling	875	93.6%	60	6.4%
G Fraud And Forgery	35	87.5%	5	12.5%
H Criminal Damage	301	87.0%	45	13.0%
I Drugs Offences	188	95.9%	8	4.1%
J Public Order Offences	636	84.7%	115	15.3%
K All Other Offences (excluding Motoring)	251	86.6%	39	13.4%
L Motoring Offences	2,370	88.8%	299	11.2%
Admin Finalisations	0	0.0%	205	100.0%
TOTAL	5,684	84.2%	1,064	15.8%