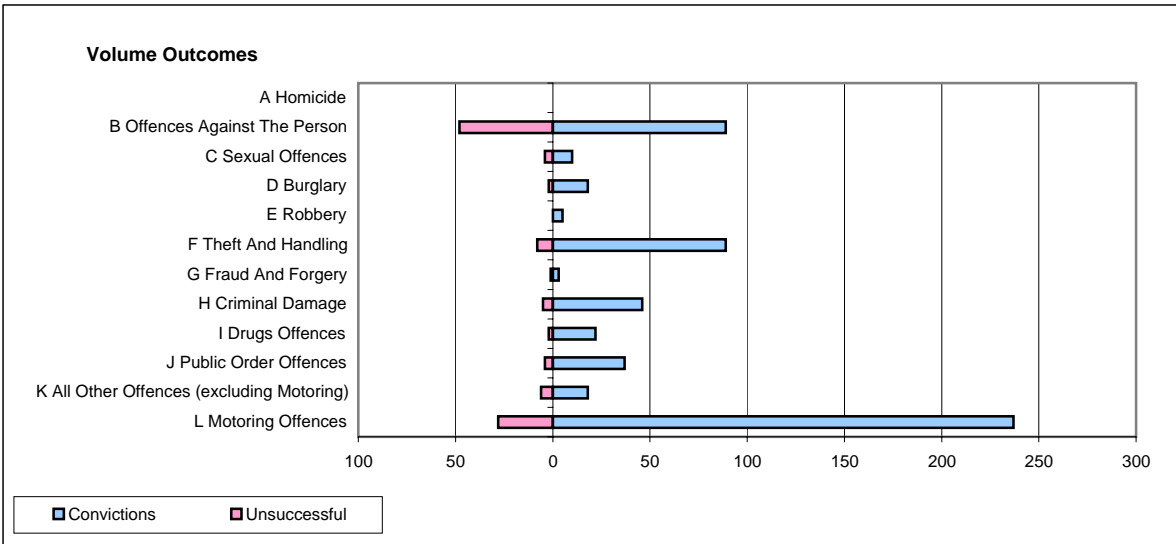
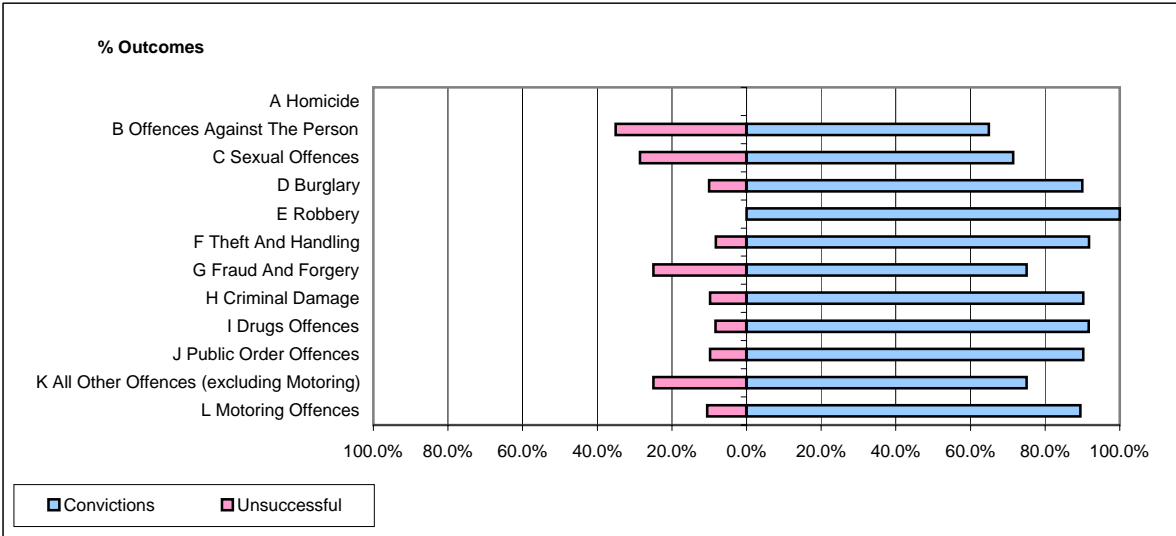


CPS OUTCOMES BY PRINCIPAL OFFENCE CATEGORY

November 2006

P14-Gloucestershire



	Convictions		Unsuccessful	
	Number of Defendants	%	Number of Defendants	%
A Homicide	0	#DIV/0!	0	#DIV/0!
B Offences Against The Person	89	65.0%	48	35.0%
C Sexual Offences	10	71.4%	4	28.6%
D Burglary	18	90.0%	2	10.0%
E Robbery	5	100.0%	0	0.0%
F Theft And Handling	89	91.8%	8	8.2%
G Fraud And Forgery	3	75.0%	1	25.0%
H Criminal Damage	46	90.2%	5	9.8%
I Drugs Offences	22	91.7%	2	8.3%
J Public Order Offences	37	90.2%	4	9.8%
K All Other Offences (excluding Motoring)	18	75.0%	6	25.0%
L Motoring Offences	237	89.4%	28	10.6%
Admin Finalisations	0	0.0%	17	100.0%
TOTAL	574	82.1%	125	17.9%