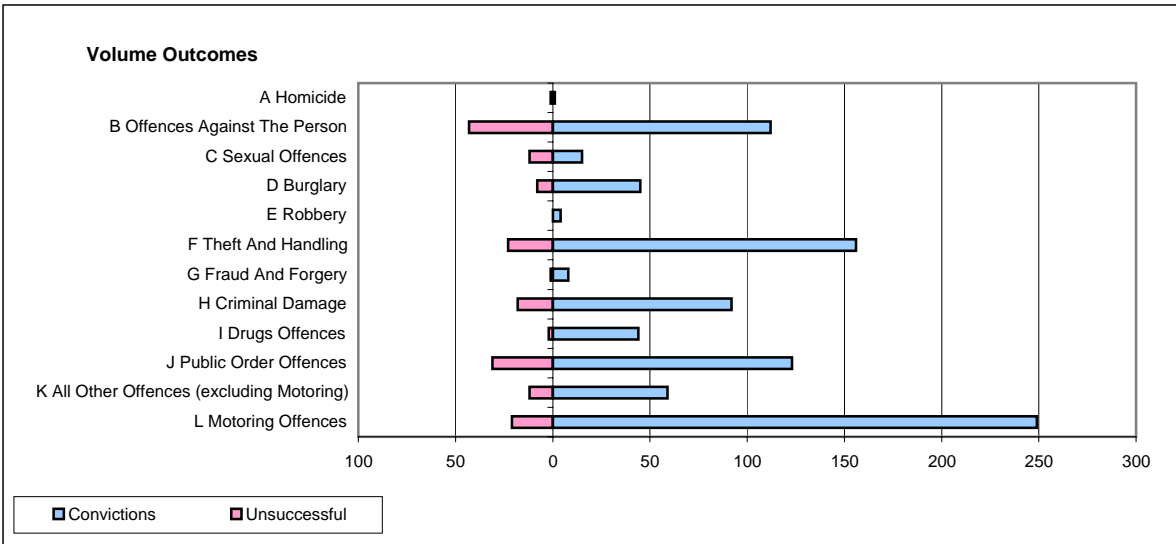
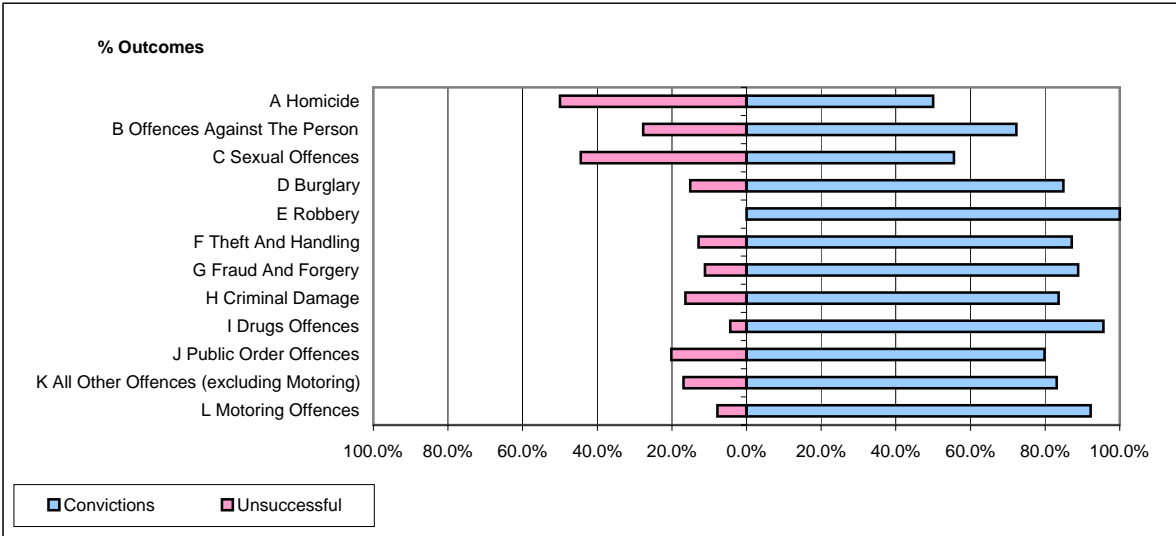


CPS OUTCOMES BY PRINCIPAL OFFENCE CATEGORY

November 2006

P11-Durham



	Convictions		Unsuccessful	
	Number of Defendants	%	Number of Defendants	%
A Homicide	1	50.0%	1	50.0%
B Offences Against The Person	112	72.3%	43	27.7%
C Sexual Offences	15	55.6%	12	44.4%
D Burglary	45	84.9%	8	15.1%
E Robbery	4	100.0%	0	0.0%
F Theft And Handling	156	87.2%	23	12.8%
G Fraud And Forgery	8	88.9%	1	11.1%
H Criminal Damage	92	83.6%	18	16.4%
I Drugs Offences	44	95.7%	2	4.3%
J Public Order Offences	123	79.9%	31	20.1%
K All Other Offences (excluding Motoring)	59	83.1%	12	16.9%
L Motoring Offences	249	92.2%	21	7.8%
Admin Finalisations	0	0.0%	18	100.0%
TOTAL	908	82.7%	190	17.3%