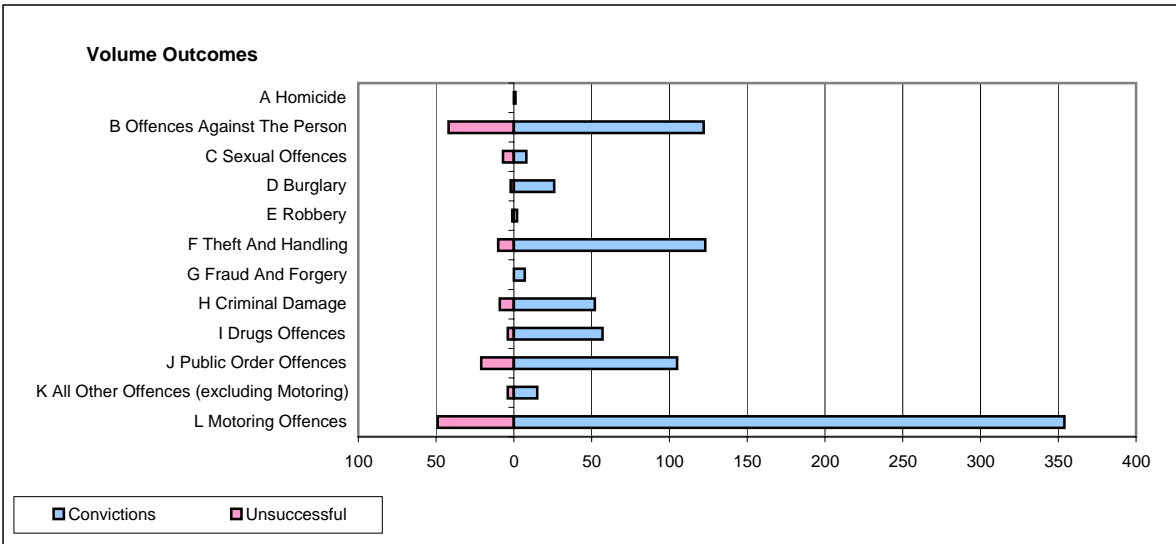
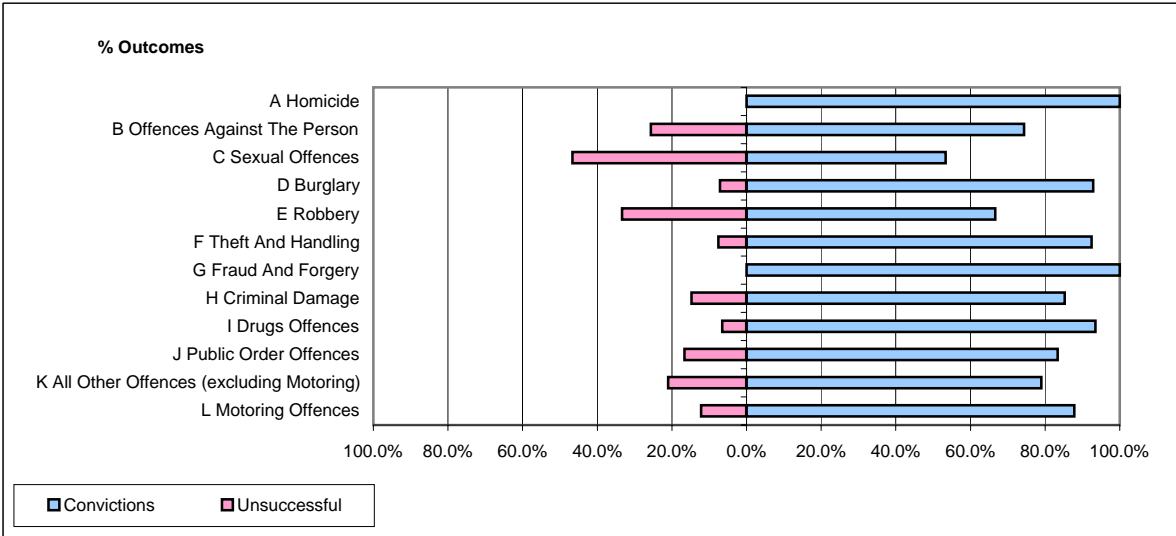


**CPS OUTCOMES BY PRINCIPAL OFFENCE CATEGORY**

**November 2006**

**P10-Dorset**



	Convictions		Unsuccessful	
	Number of Defendants	%	Number of Defendants	%
<b>A Homicide</b>	<b>1</b>	<b>100.0%</b>	<b>0</b>	<b>0.0%</b>
<b>B Offences Against The Person</b>	<b>122</b>	<b>74.4%</b>	<b>42</b>	<b>25.6%</b>
<b>C Sexual Offences</b>	<b>8</b>	<b>53.3%</b>	<b>7</b>	<b>46.7%</b>
<b>D Burglary</b>	<b>26</b>	<b>92.9%</b>	<b>2</b>	<b>7.1%</b>
<b>E Robbery</b>	<b>2</b>	<b>66.7%</b>	<b>1</b>	<b>33.3%</b>
<b>F Theft And Handling</b>	<b>123</b>	<b>92.5%</b>	<b>10</b>	<b>7.5%</b>
<b>G Fraud And Forgery</b>	<b>7</b>	<b>100.0%</b>	<b>0</b>	<b>0.0%</b>
<b>H Criminal Damage</b>	<b>52</b>	<b>85.2%</b>	<b>9</b>	<b>14.8%</b>
<b>I Drugs Offences</b>	<b>57</b>	<b>93.4%</b>	<b>4</b>	<b>6.6%</b>
<b>J Public Order Offences</b>	<b>105</b>	<b>83.3%</b>	<b>21</b>	<b>16.7%</b>
<b>K All Other Offences (excluding Motoring)</b>	<b>15</b>	<b>78.9%</b>	<b>4</b>	<b>21.1%</b>
<b>L Motoring Offences</b>	<b>354</b>	<b>87.8%</b>	<b>49</b>	<b>12.2%</b>
<b>Admin Finalisations</b>	<b>0</b>	<b>0.0%</b>	<b>25</b>	<b>100.0%</b>
<b>TOTAL</b>	<b>872</b>	<b>83.4%</b>	<b>174</b>	<b>16.6%</b>