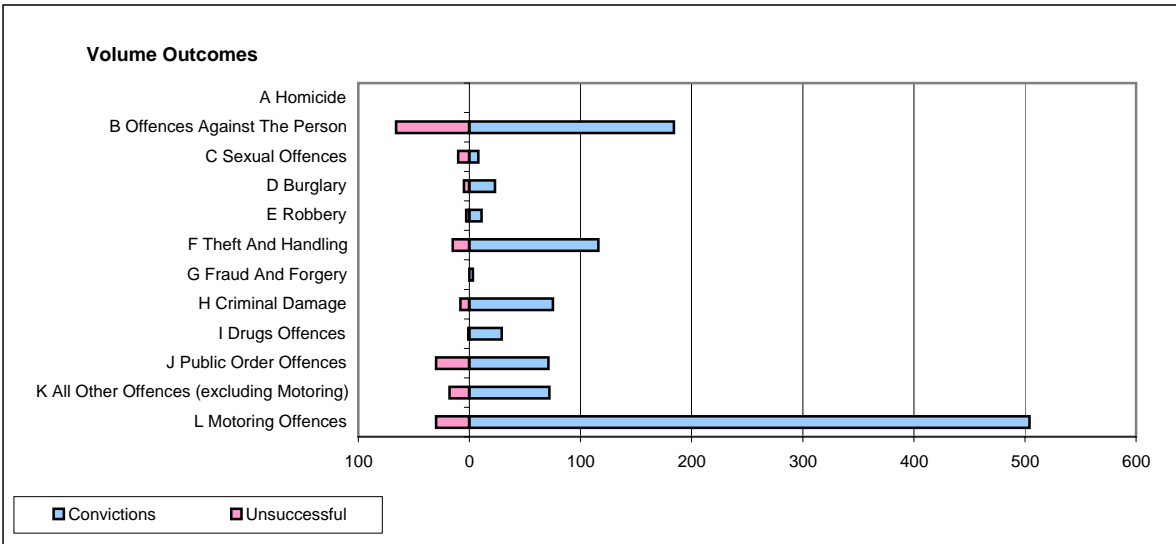
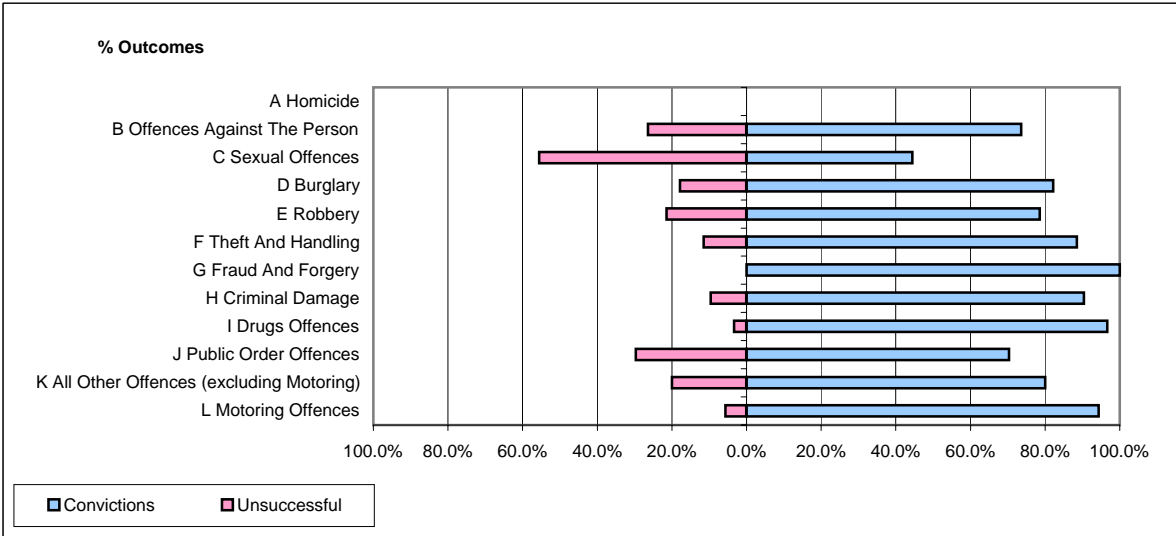


CPS OUTCOMES BY PRINCIPAL OFFENCE CATEGORY

November 2006

P08-Derbyshire



	Convictions		Unsuccessful	
	Number of Defendants	%	Number of Defendants	%
A Homicide	0	#DIV/0!	0	#DIV/0!
B Offences Against The Person	184	73.6%	66	26.4%
C Sexual Offences	8	44.4%	10	55.6%
D Burglary	23	82.1%	5	17.9%
E Robbery	11	78.6%	3	21.4%
F Theft And Handling	116	88.5%	15	11.5%
G Fraud And Forgery	3	100.0%	0	0.0%
H Criminal Damage	75	90.4%	8	9.6%
I Drugs Offences	29	96.7%	1	3.3%
J Public Order Offences	71	70.3%	30	29.7%
K All Other Offences (excluding Motoring)	72	80.0%	18	20.0%
L Motoring Offences	504	94.4%	30	5.6%
Admin Finalisations	0	0.0%	14	100.0%
TOTAL	1,096	84.6%	200	15.4%