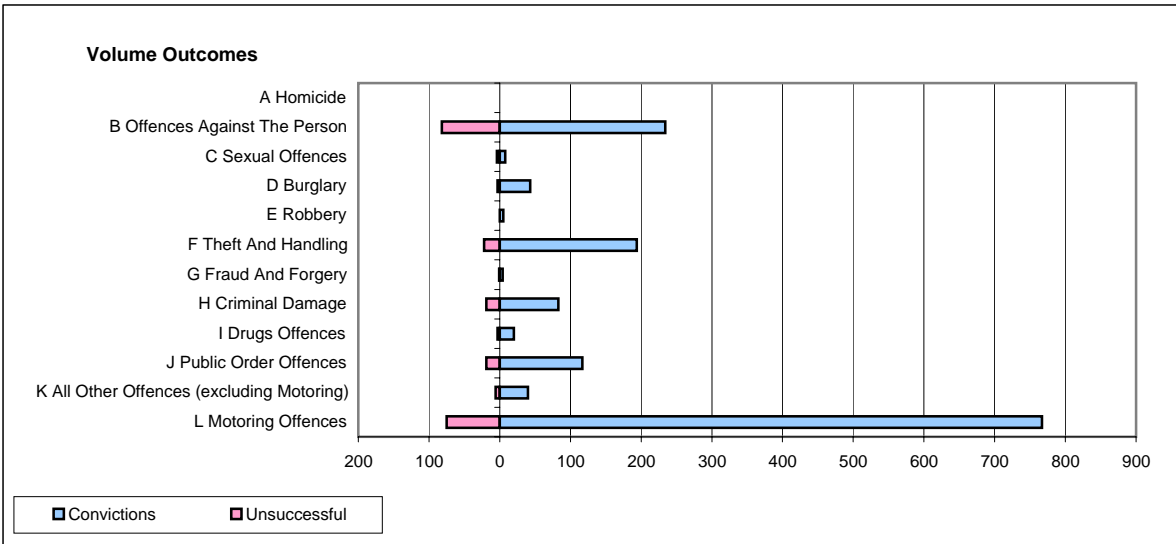
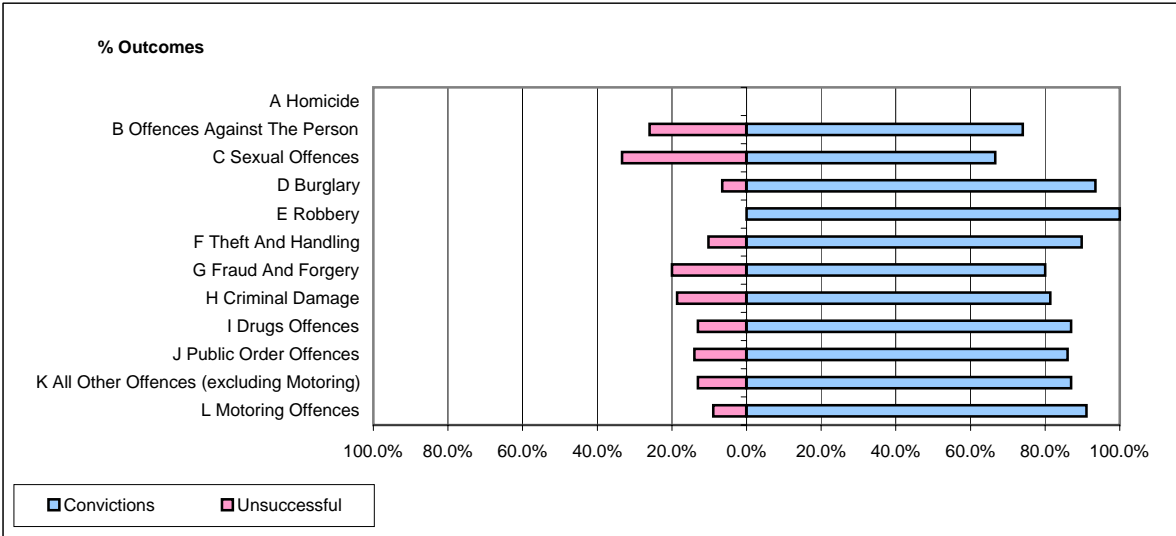


CPS OUTCOMES BY PRINCIPAL OFFENCE CATEGORY

November 2006

P04-Cheshire



	Convictions		Unsuccessful	
	Number of Defendants	%	Number of Defendants	%
A Homicide	0	#DIV/0!	0	#DIV/0!
B Offences Against The Person	234	74.1%	82	25.9%
C Sexual Offences	8	66.7%	4	33.3%
D Burglary	43	93.5%	3	6.5%
E Robbery	5	100.0%	0	0.0%
F Theft And Handling	194	89.8%	22	10.2%
G Fraud And Forgery	4	80.0%	1	20.0%
H Criminal Damage	83	81.4%	19	18.6%
I Drugs Offences	20	87.0%	3	13.0%
J Public Order Offences	117	86.0%	19	14.0%
K All Other Offences (excluding Motoring)	40	87.0%	6	13.0%
L Motoring Offences	767	91.1%	75	8.9%
Admin Finalisations	0	0.0%	18	100.0%
TOTAL	1,515	85.7%	252	14.3%