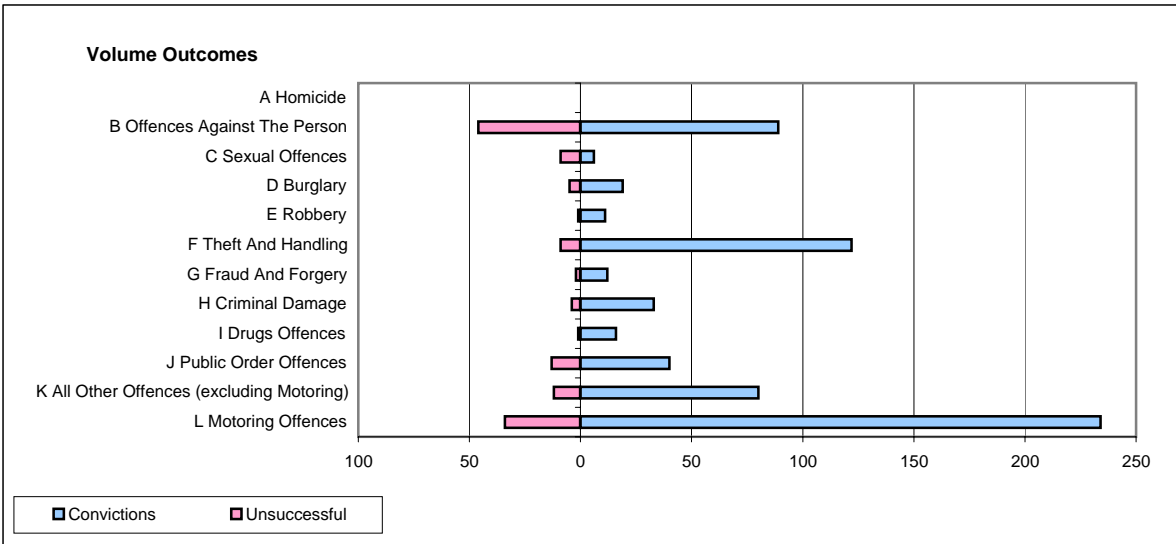
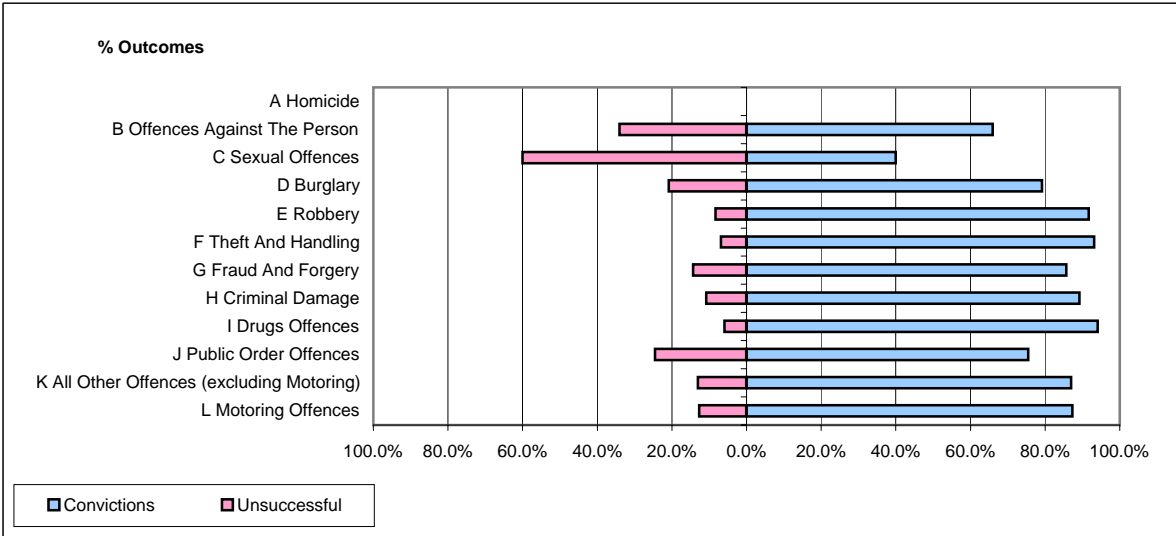


CPS OUTCOMES BY PRINCIPAL OFFENCE CATEGORY

November 2006

P02-Bedfordshire



	Convictions		Unsuccessful	
	Number of Defendants	%	Number of Defendants	%
A Homicide	0	#DIV/0!	0	#DIV/0!
B Offences Against The Person	89	65.9%	46	34.1%
C Sexual Offences	6	40.0%	9	60.0%
D Burglary	19	79.2%	5	20.8%
E Robbery	11	91.7%	1	8.3%
F Theft And Handling	122	93.1%	9	6.9%
G Fraud And Forgery	12	85.7%	2	14.3%
H Criminal Damage	33	89.2%	4	10.8%
I Drugs Offences	16	94.1%	1	5.9%
J Public Order Offences	40	75.5%	13	24.5%
K All Other Offences (excluding Motoring)	80	87.0%	12	13.0%
L Motoring Offences	234	87.3%	34	12.7%
Admin Finalisations	0	0.0%	13	100.0%
TOTAL	662	81.6%	149	18.4%