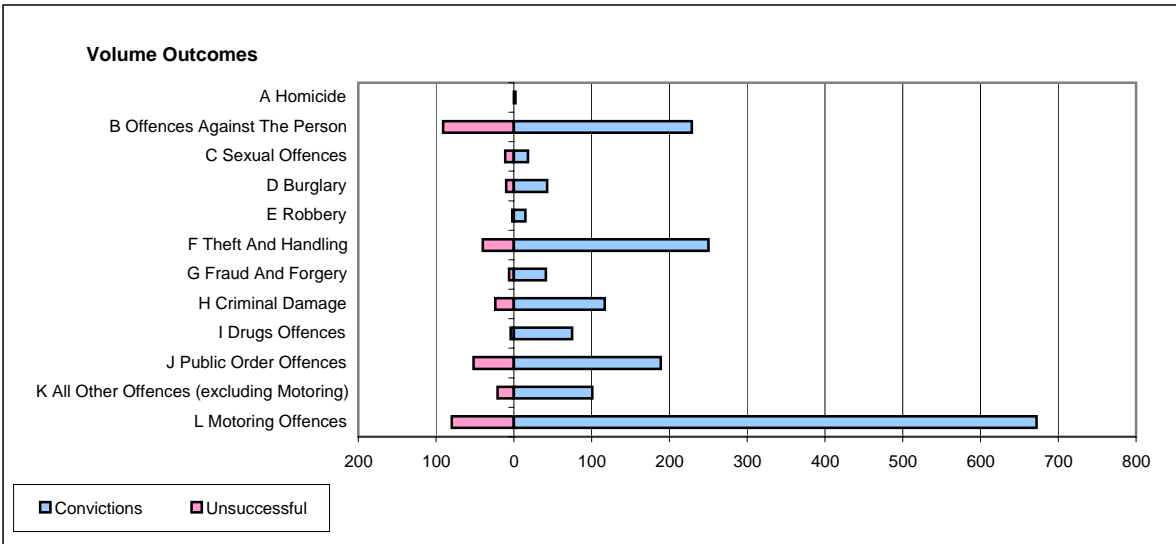
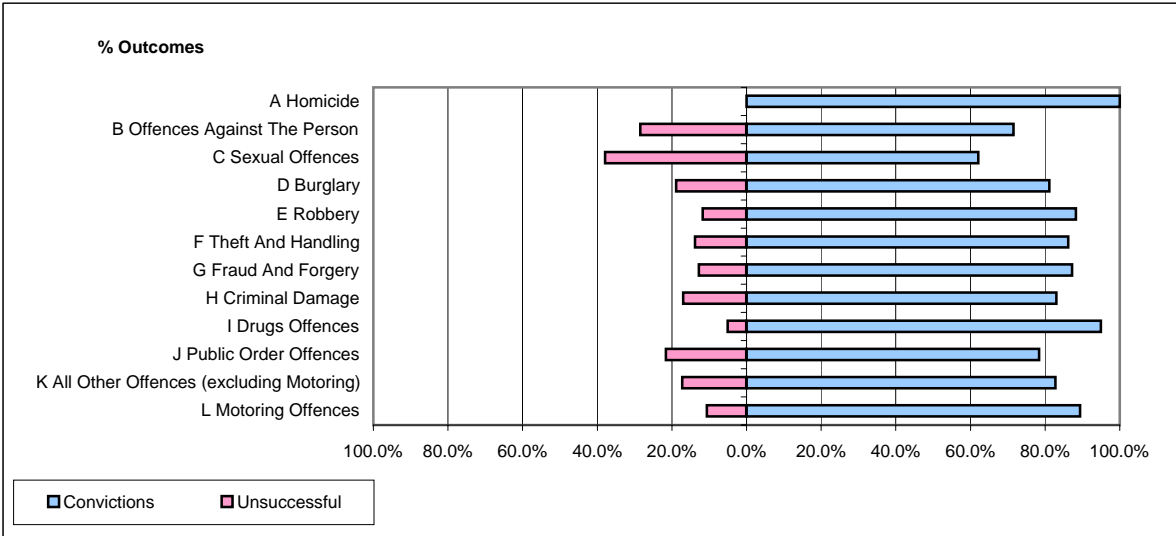


CPS OUTCOMES BY PRINCIPAL OFFENCE CATEGORY

October 2006

P37-Sussex



	Convictions		Unsuccessful	
	Number of Defendants	%	Number of Defendants	%
A Homicide	2	100.0%	0	0.0%
B Offences Against The Person	229	71.6%	91	28.4%
C Sexual Offences	18	62.1%	11	37.9%
D Burglary	43	81.1%	10	18.9%
E Robbery	15	88.2%	2	11.8%
F Theft And Handling	250	86.2%	40	13.8%
G Fraud And Forgery	41	87.2%	6	12.8%
H Criminal Damage	117	83.0%	24	17.0%
I Drugs Offences	75	94.9%	4	5.1%
J Public Order Offences	189	78.4%	52	21.6%
K All Other Offences (excluding Motoring)	101	82.8%	21	17.2%
L Motoring Offences	672	89.4%	80	10.6%
Admin Finalisations	0	0.0%	33	100.0%
TOTAL	1,752	82.4%	374	17.6%