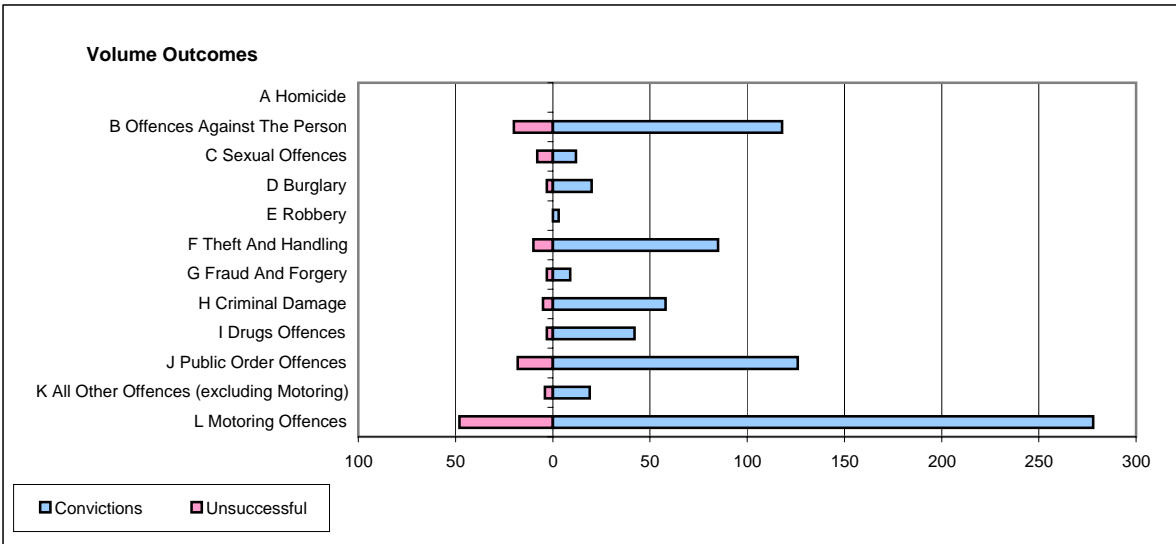
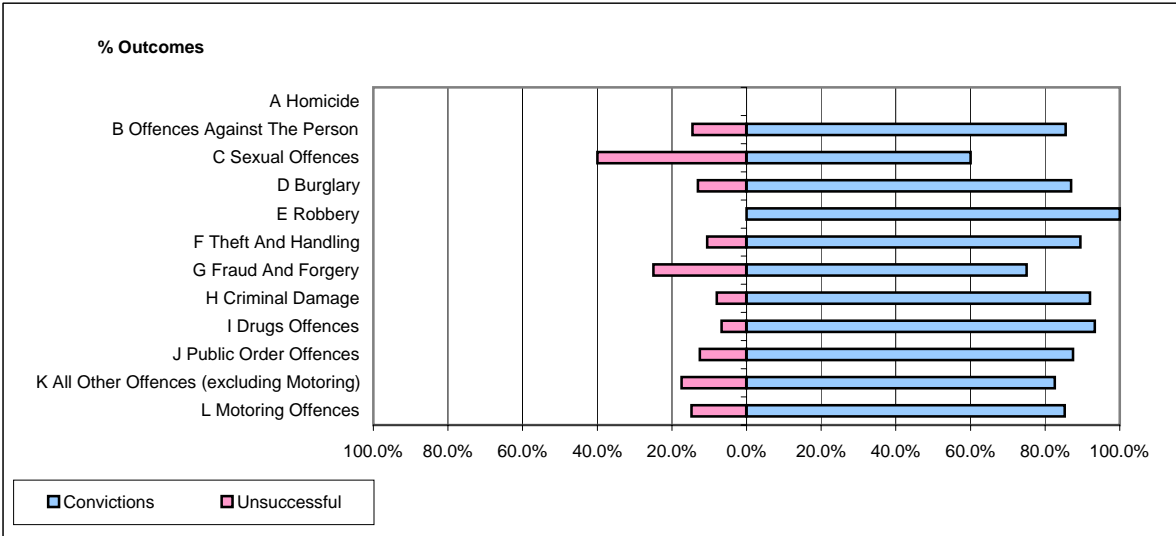


CPS OUTCOMES BY PRINCIPAL OFFENCE CATEGORY

October 2006

P35-Suffolk



	Convictions		Unsuccessful	
	Number of Defendants	%	Number of Defendants	%
A Homicide	0	#DIV/0!	0	#DIV/0!
B Offences Against The Person	118	85.0%	20	14.5%
C Sexual Offences	12	60.0%	8	40.0%
D Burglary	20	87.0%	3	13.0%
E Robbery	3	100.0%	0	0.0%
F Theft And Handling	85	89.5%	10	10.5%
G Fraud And Forgery	9	75.0%	3	25.0%
H Criminal Damage	58	92.1%	5	7.9%
I Drugs Offences	42	93.3%	3	6.7%
J Public Order Offences	126	87.5%	18	12.5%
K All Other Offences (excluding Motoring)	19	82.6%	4	17.4%
L Motoring Offences	278	85.3%	48	14.7%
Admin Finalisations	0	0.0%	23	100.0%
TOTAL	770	84.2%	145	15.8%