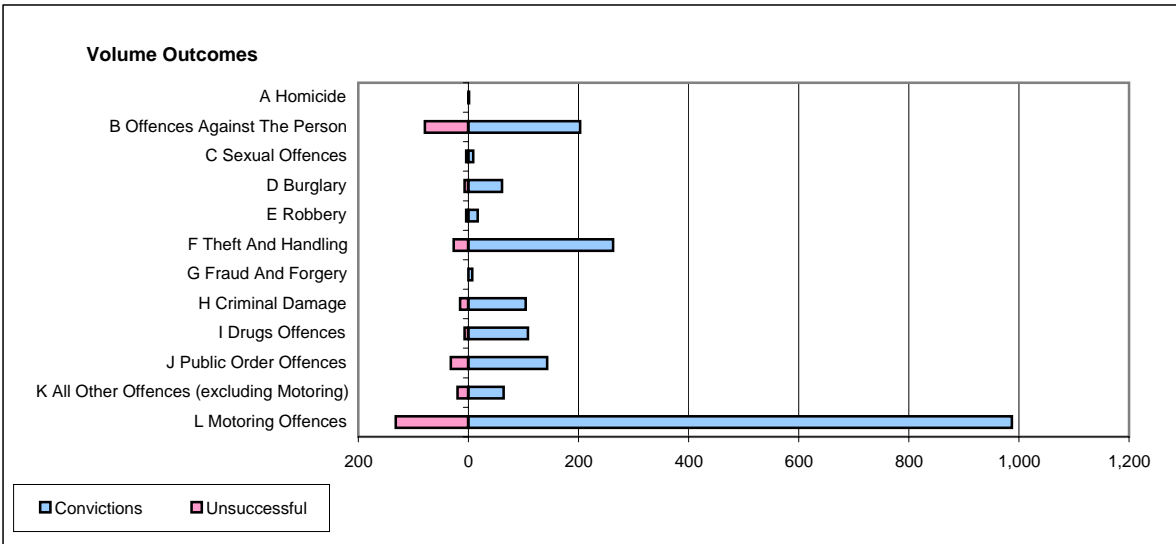
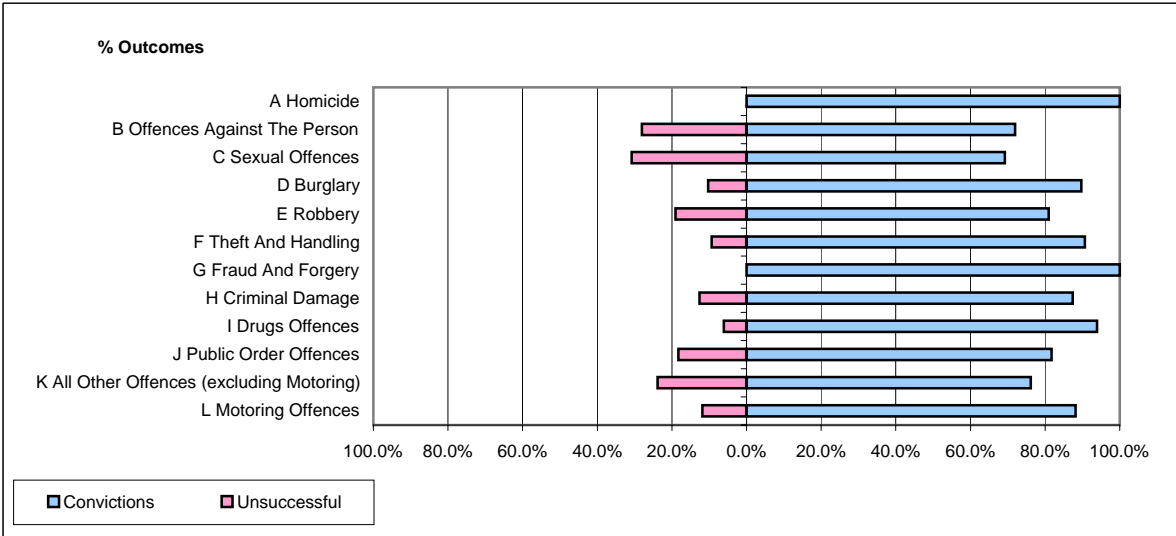


CPS OUTCOMES BY PRINCIPAL OFFENCE CATEGORY

October 2006

P32-SouthWales



	Convictions		Unsuccessful	
	Number of Defendants	%	Number of Defendants	%
A Homicide	1	100.0%	0	0.0%
B Offences Against The Person	203	72.0%	79	28.0%
C Sexual Offences	9	69.2%	4	30.8%
D Burglary	61	89.7%	7	10.3%
E Robbery	17	81.0%	4	19.0%
F Theft And Handling	263	90.7%	27	9.3%
G Fraud And Forgery	7	100.0%	0	0.0%
H Criminal Damage	104	87.4%	15	12.6%
I Drugs Offences	108	93.9%	7	6.1%
J Public Order Offences	143	81.7%	32	18.3%
K All Other Offences (excluding Motoring)	64	76.2%	20	23.8%
L Motoring Offences	987	88.2%	132	11.8%
Admin Finalisations	0	0.0%	120	100.0%
TOTAL	1,967	81.5%	447	18.5%