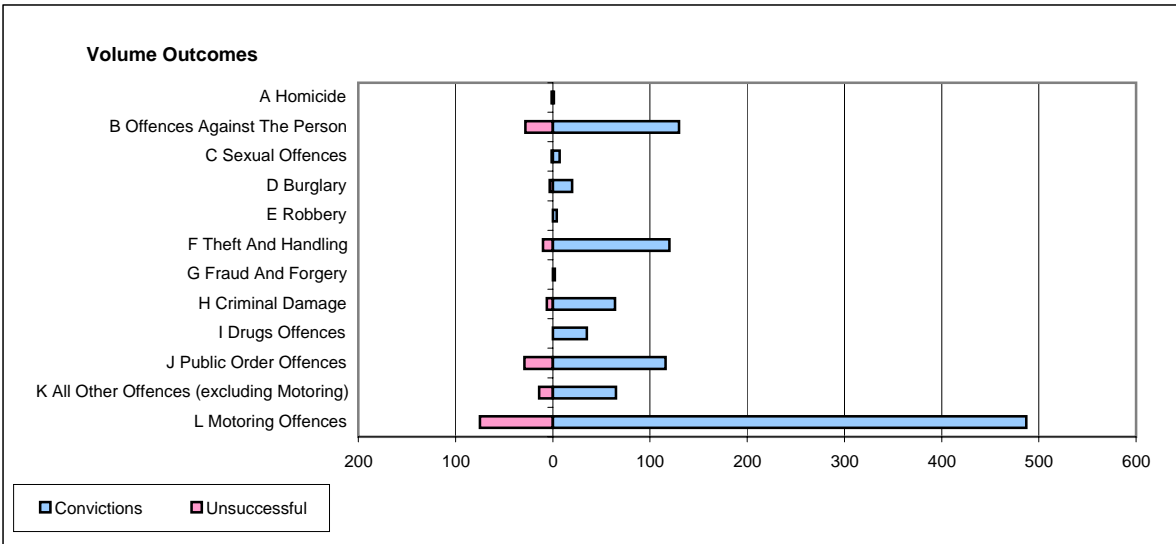
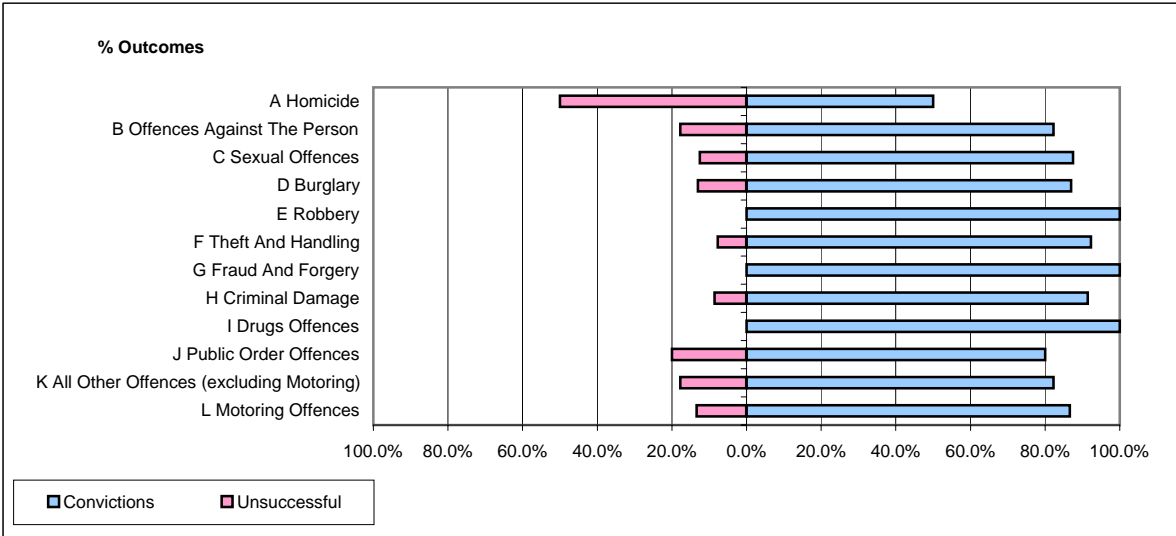


CPS OUTCOMES BY PRINCIPAL OFFENCE CATEGORY

October 2006

P29-NorthWales



	Convictions		Unsuccessful	
	Number of Defendants	%	Number of Defendants	%
A Homicide	1	50.0%	1	50.0%
B Offences Against The Person	130	82.3%	28	17.7%
C Sexual Offences	7	87.5%	1	12.5%
D Burglary	20	87.0%	3	13.0%
E Robbery	4	100.0%	0	0.0%
F Theft And Handling	120	92.3%	10	7.7%
G Fraud And Forgery	2	100.0%	0	0.0%
H Criminal Damage	64	91.4%	6	8.6%
I Drugs Offences	35	100.0%	0	0.0%
J Public Order Offences	116	80.0%	29	20.0%
K All Other Offences (excluding Motoring)	65	82.3%	14	17.7%
L Motoring Offences	487	86.7%	75	13.3%
Admin Finalisations	0	0.0%	11	100.0%
TOTAL	1,051	85.5%	178	14.5%