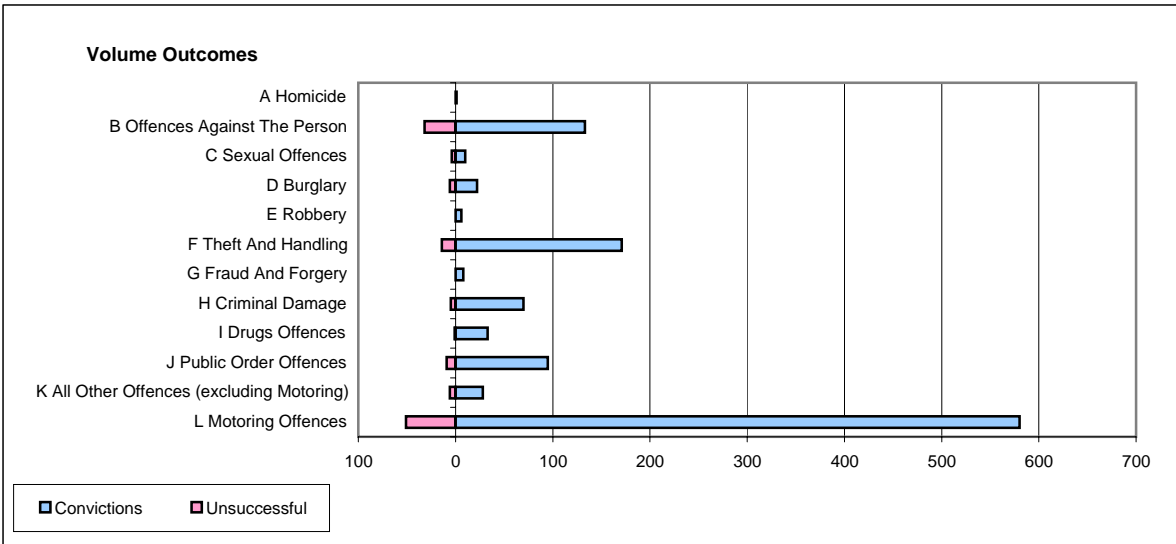
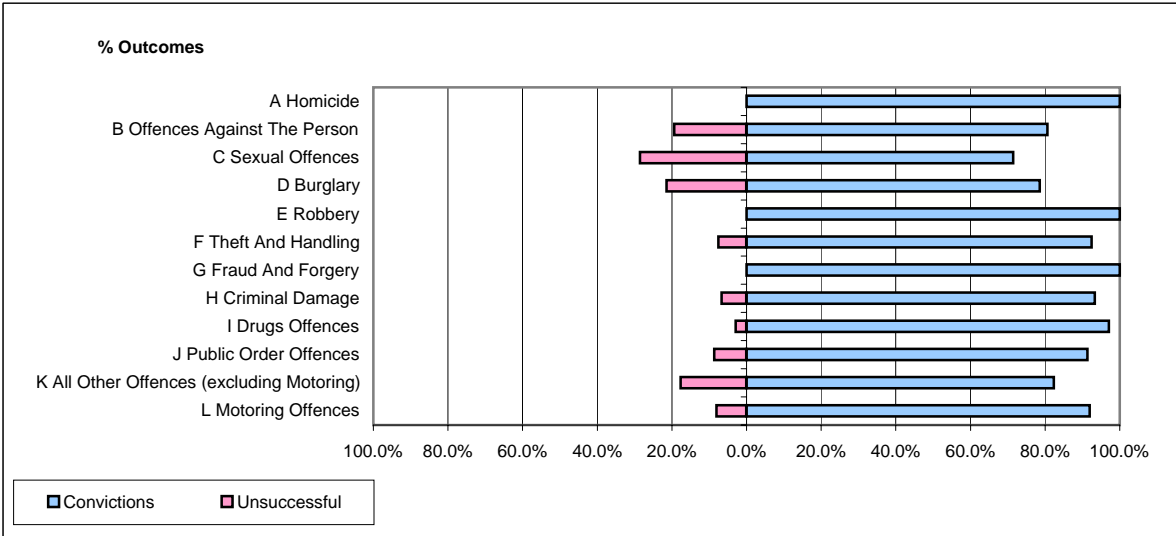


CPS OUTCOMES BY PRINCIPAL OFFENCE CATEGORY

October 2006

P26-Norfolk



	Convictions		Unsuccessful	
	Number of Defendants	%	Number of Defendants	%
A Homicide	1	100.0%	0	0.0%
B Offences Against The Person	133	80.6%	32	19.4%
C Sexual Offences	10	71.4%	4	28.6%
D Burglary	22	78.6%	6	21.4%
E Robbery	6	100.0%	0	0.0%
F Theft And Handling	171	92.4%	14	7.6%
G Fraud And Forgery	8	100.0%	0	0.0%
H Criminal Damage	70	93.3%	5	6.7%
I Drugs Offences	33	97.1%	1	2.9%
J Public Order Offences	95	91.3%	9	8.7%
K All Other Offences (excluding Motoring)	28	82.4%	6	17.6%
L Motoring Offences	580	91.9%	51	8.1%
Admin Finalisations	0	0.0%	18	100.0%
TOTAL	1,157	88.8%	146	11.2%