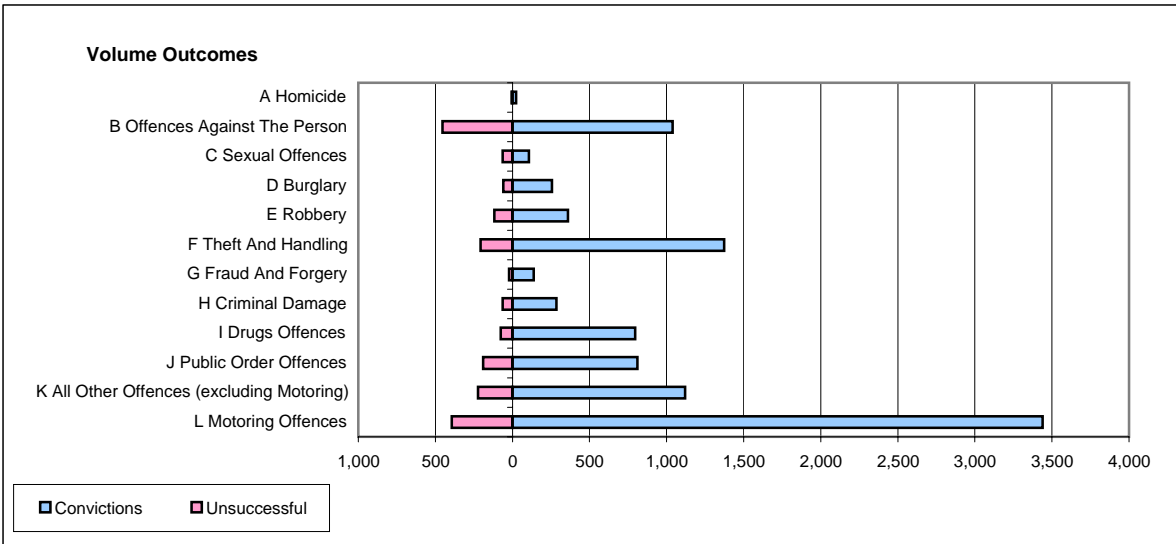
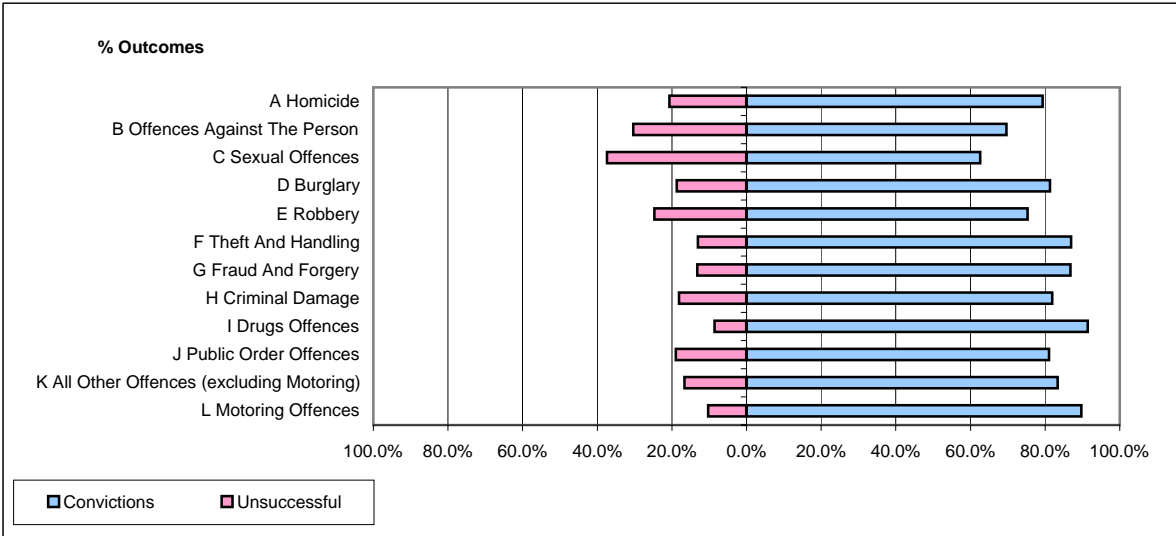


CPS OUTCOMES BY PRINCIPAL OFFENCE CATEGORY

October 2006

P25-Metropolitan&City



	Convictions		Unsuccessful	
	Number of Defendants	%	Number of Defendants	%
A Homicide	23	79.3%	6	20.7%
B Offences Against The Person	1,040	69.7%	453	30.3%
C Sexual Offences	107	62.6%	64	37.4%
D Burglary	256	81.3%	59	18.7%
E Robbery	360	75.3%	118	24.7%
F Theft And Handling	1,374	87.0%	206	13.0%
G Fraud And Forgery	138	86.8%	21	13.2%
H Criminal Damage	285	81.9%	63	18.1%
I Drugs Offences	796	91.4%	75	8.6%
J Public Order Offences	811	81.0%	190	19.0%
K All Other Offences (excluding Motoring)	1,119	83.4%	223	16.6%
L Motoring Offences	3,439	89.7%	394	10.3%
Admin Finalisations	0	0.0%	494	100.0%
TOTAL	9,748	80.5%	2,366	19.5%