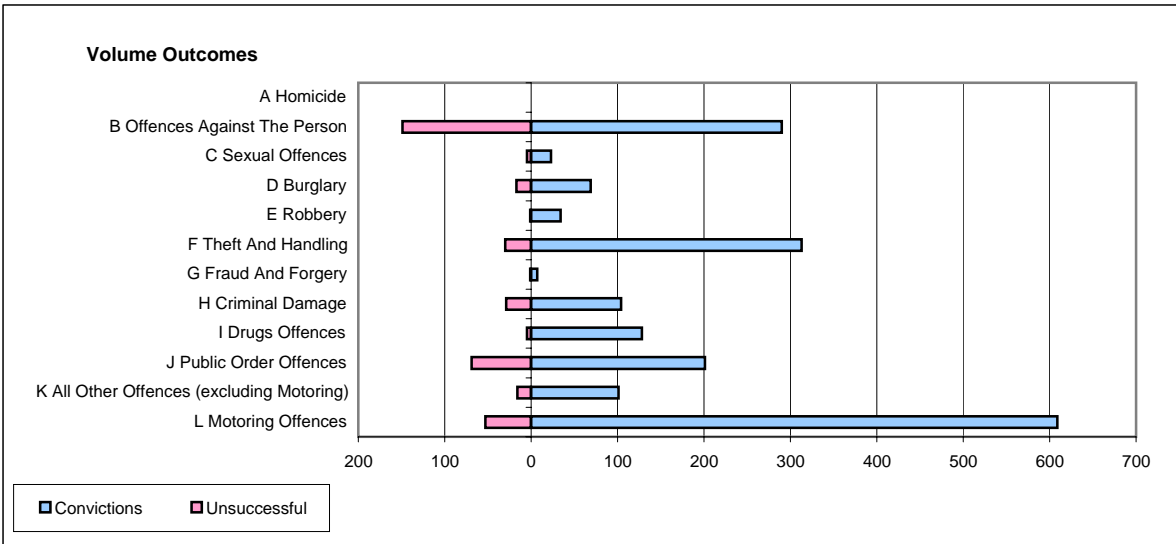
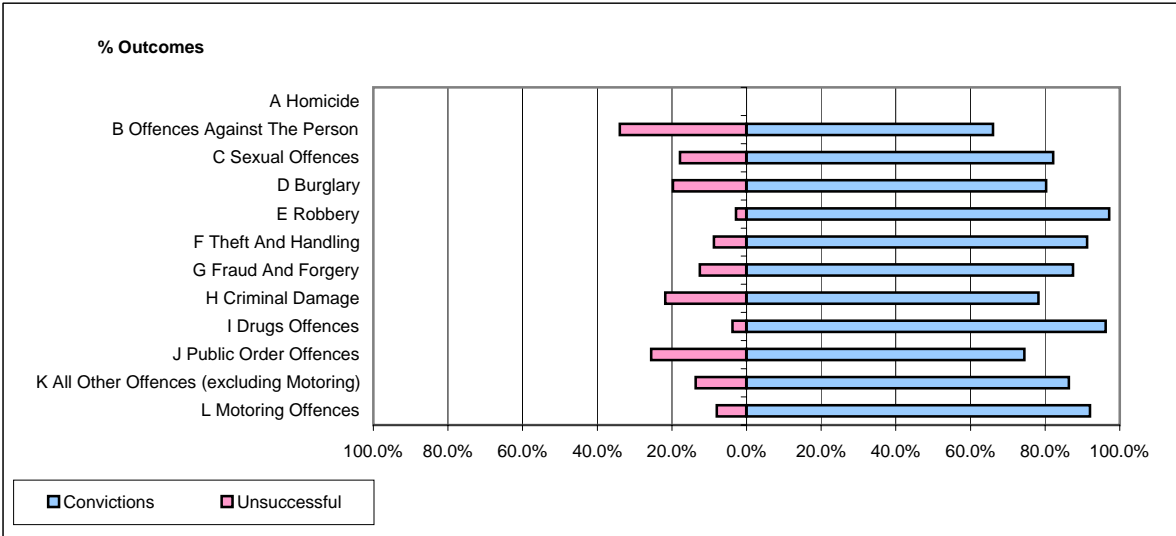


CPS OUTCOMES BY PRINCIPAL OFFENCE CATEGORY

October 2006

P24-Merseyside



	Convictions		Unsuccessful	
	Number of Defendants	%	Number of Defendants	%
A Homicide	0	#DIV/0!	0	#DIV/0!
B Offences Against The Person	290	66.1%	149	33.9%
C Sexual Offences	23	82.1%	5	17.9%
D Burglary	69	80.2%	17	19.8%
E Robbery	34	97.1%	1	2.9%
F Theft And Handling	313	91.3%	30	8.7%
G Fraud And Forgery	7	87.5%	1	12.5%
H Criminal Damage	104	78.2%	29	21.8%
I Drugs Offences	128	96.2%	5	3.8%
J Public Order Offences	201	74.4%	69	25.6%
K All Other Offences (excluding Motoring)	101	86.3%	16	13.7%
L Motoring Offences	609	92.0%	53	8.0%
Admin Finalisations	0	0.0%	39	100.0%
TOTAL	1,879	81.9%	414	18.1%