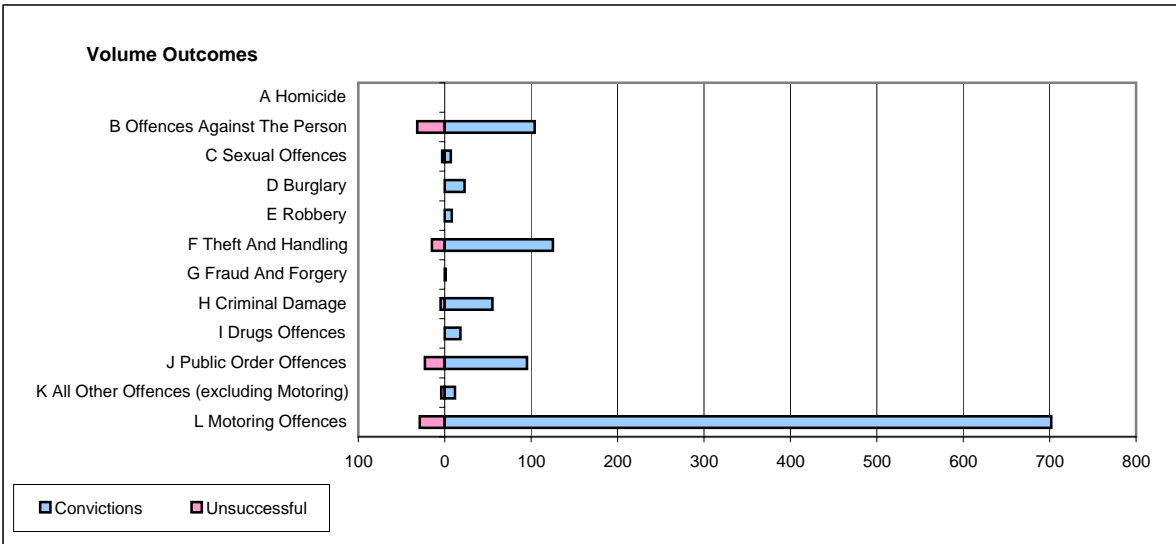
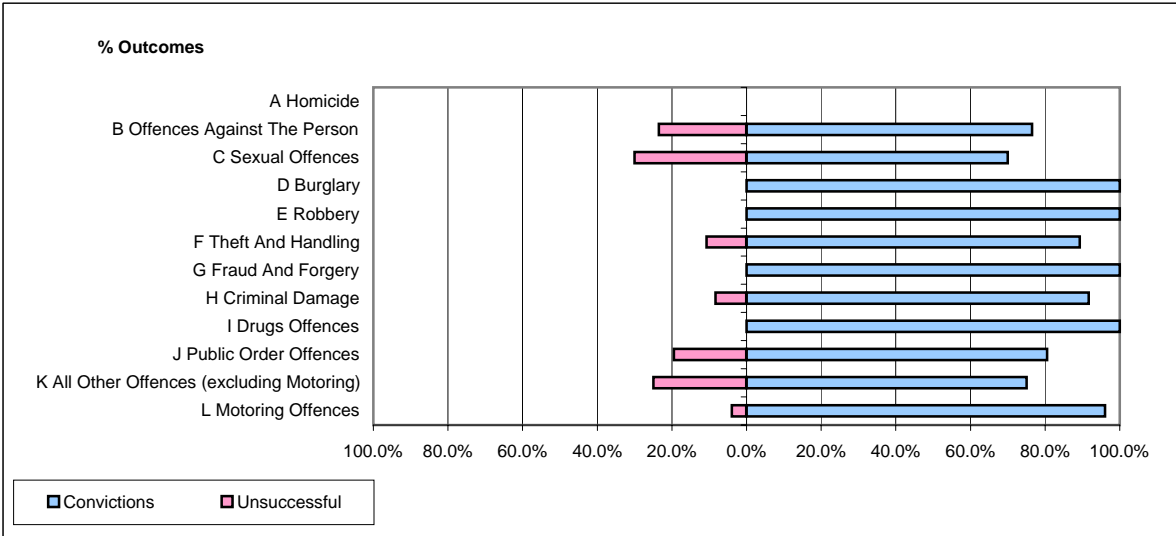


CPS OUTCOMES BY PRINCIPAL OFFENCE CATEGORY

October 2006

P23-Lincolnshire



	Convictions		Unsuccessful	
	Number of Defendants	%	Number of Defendants	%
A Homicide	0	#DIV/0!	0	#DIV/0!
B Offences Against The Person	104	76.5%	32	23.5%
C Sexual Offences	7	70.0%	3	30.0%
D Burglary	23	100.0%	0	0.0%
E Robbery	8	100.0%	0	0.0%
F Theft And Handling	125	89.3%	15	10.7%
G Fraud And Forgery	1	100.0%	0	0.0%
H Criminal Damage	55	91.7%	5	8.3%
I Drugs Offences	18	100.0%	0	0.0%
J Public Order Offences	95	80.5%	23	19.5%
K All Other Offences (excluding Motoring)	12	75.0%	4	25.0%
L Motoring Offences	702	96.0%	29	4.0%
Admin Finalisations	0	0.0%	9	100.0%
TOTAL	1,150	90.6%	120	9.4%