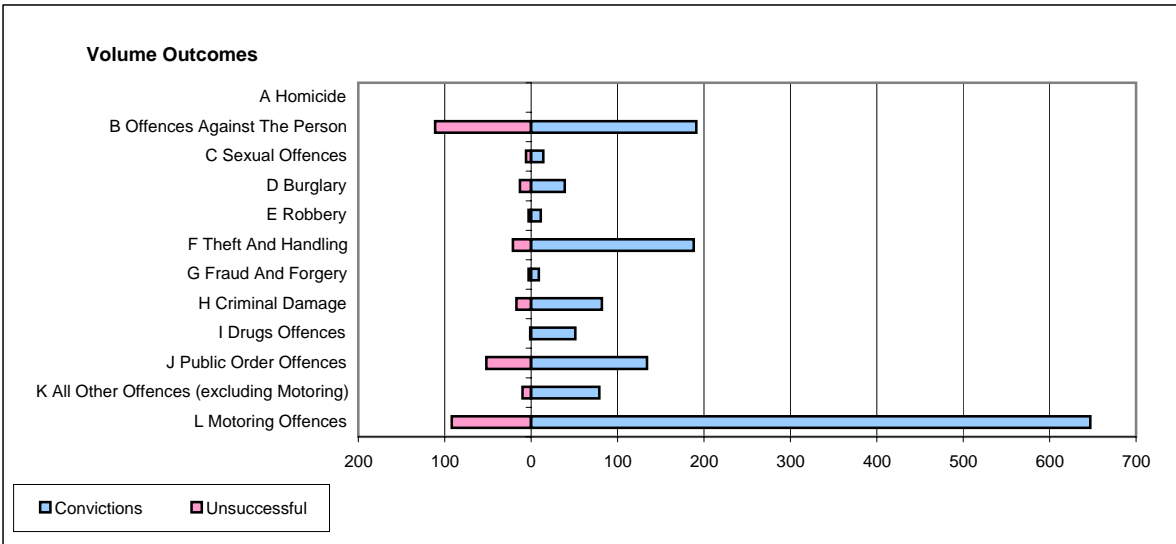
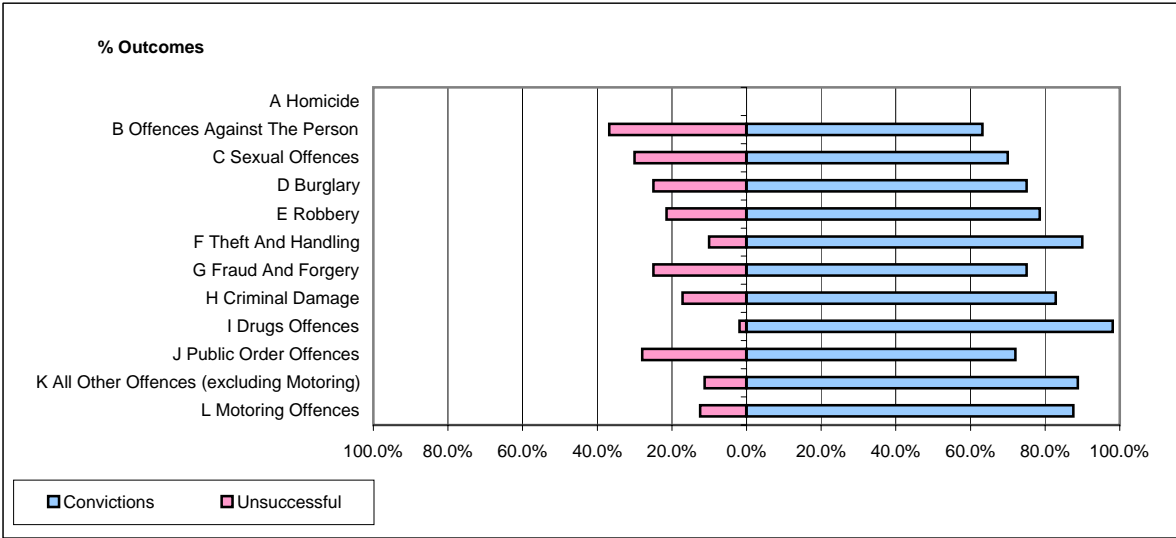


CPS OUTCOMES BY PRINCIPAL OFFENCE CATEGORY

October 2006

P22-Leicestershire



	Convictions		Unsuccessful	
	Number of Defendants	%	Number of Defendants	%
A Homicide	0	#DIV/0!	0	#DIV/0!
B Offences Against The Person	191	63.2%	111	36.8%
C Sexual Offences	14	70.0%	6	30.0%
D Burglary	39	75.0%	13	25.0%
E Robbery	11	78.6%	3	21.4%
F Theft And Handling	188	90.0%	21	10.0%
G Fraud And Forgery	9	75.0%	3	25.0%
H Criminal Damage	82	82.8%	17	17.2%
I Drugs Offences	51	98.1%	1	1.9%
J Public Order Offences	134	72.0%	52	28.0%
K All Other Offences (excluding Motoring)	79	88.8%	10	11.2%
L Motoring Offences	647	87.6%	92	12.4%
Admin Finalisations	0	0.0%	41	100.0%
TOTAL	1,445	79.6%	370	20.4%