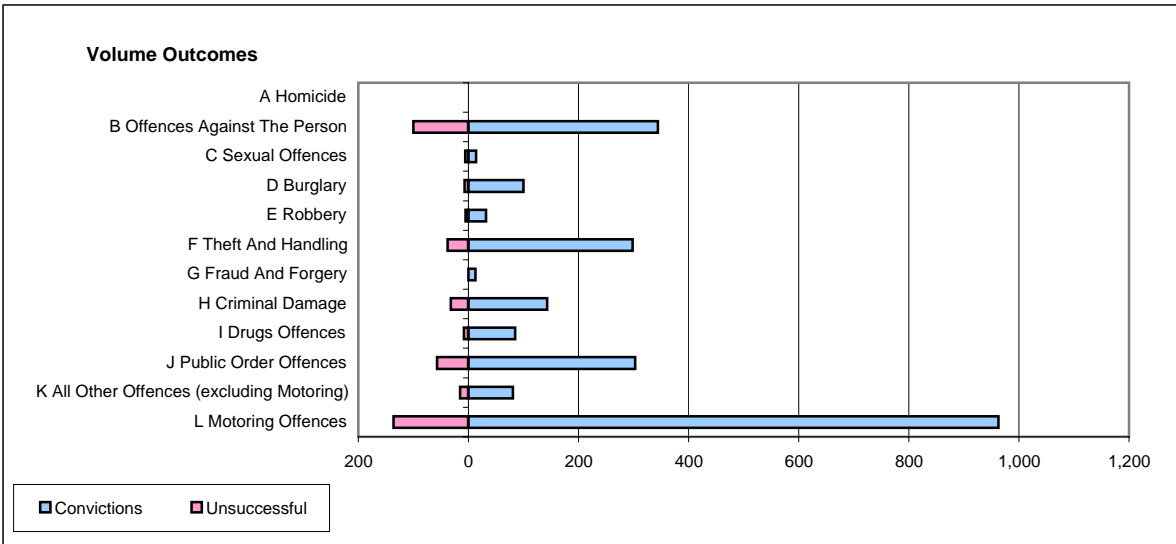
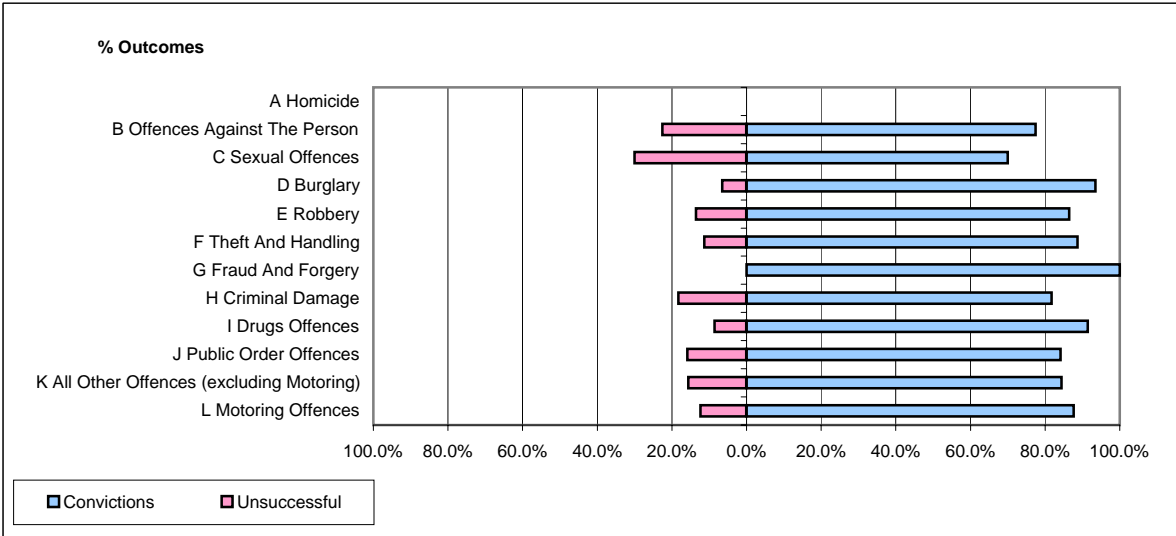


CPS OUTCOMES BY PRINCIPAL OFFENCE CATEGORY

October 2006

P21-Lancashire



	Convictions		Unsuccessful	
	Number of Defendants	%	Number of Defendants	%
A Homicide	0	#DIV/0!	0	#DIV/0!
B Offences Against The Person	344	77.5%	100	22.5%
C Sexual Offences	14	70.0%	6	30.0%
D Burglary	100	93.5%	7	6.5%
E Robbery	32	86.5%	5	13.5%
F Theft And Handling	298	88.7%	38	11.3%
G Fraud And Forgery	13	100.0%	0	0.0%
H Criminal Damage	143	81.7%	32	18.3%
I Drugs Offences	85	91.4%	8	8.6%
J Public Order Offences	303	84.2%	57	15.8%
K All Other Offences (excluding Motoring)	81	84.4%	15	15.6%
L Motoring Offences	963	87.6%	136	12.4%
Admin Finalisations	0	0.0%	54	100.0%
TOTAL	2,376	83.8%	458	16.2%