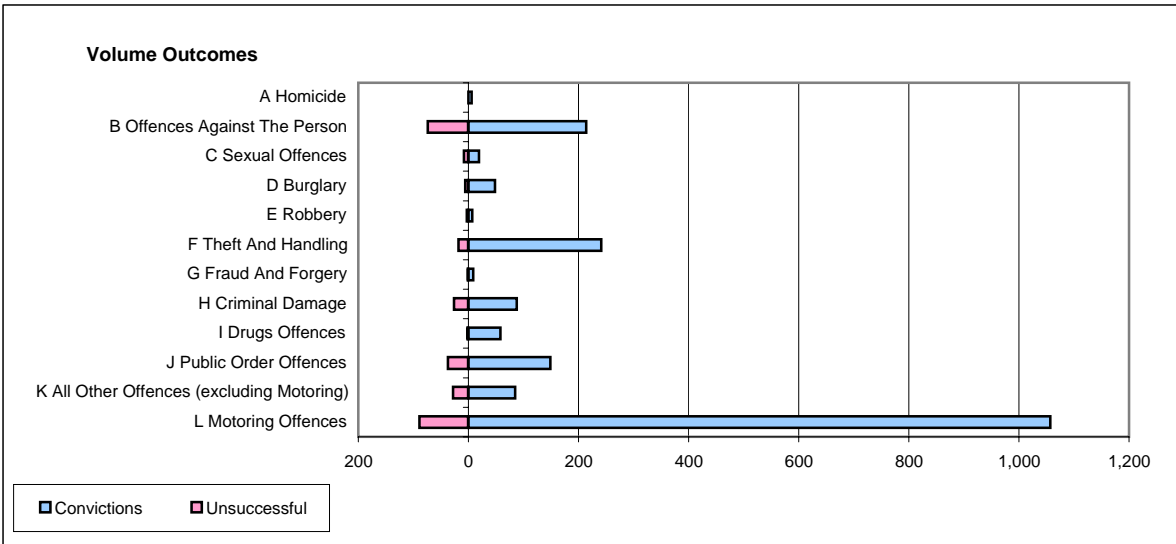
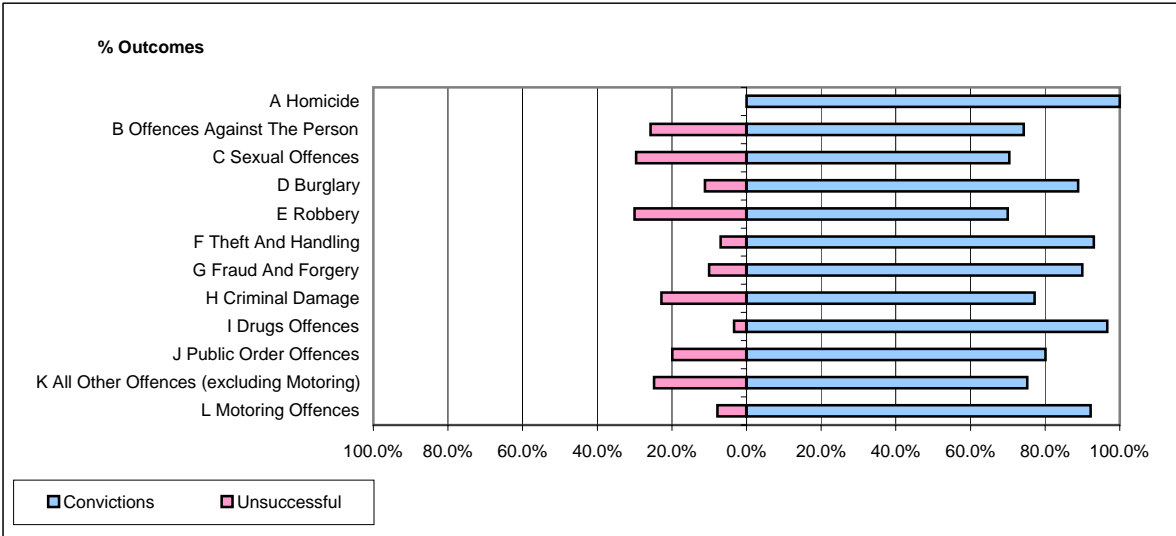


**CPS OUTCOMES BY PRINCIPAL OFFENCE CATEGORY**

**October 2006**

**P20-Kent**



	Convictions		Unsuccessful	
	Number of Defendants	%	Number of Defendants	%
<b>A Homicide</b>	6	100.0%	0	0.0%
<b>B Offences Against The Person</b>	214	74.3%	74	25.7%
<b>C Sexual Offences</b>	19	70.4%	8	29.6%
<b>D Burglary</b>	48	88.9%	6	11.1%
<b>E Robbery</b>	7	70.0%	3	30.0%
<b>F Theft And Handling</b>	241	93.1%	18	6.9%
<b>G Fraud And Forgery</b>	9	90.0%	1	10.0%
<b>H Criminal Damage</b>	88	77.2%	26	22.8%
<b>I Drugs Offences</b>	58	96.7%	2	3.3%
<b>J Public Order Offences</b>	149	80.1%	37	19.9%
<b>K All Other Offences (excluding Motoring)</b>	85	75.2%	28	24.8%
<b>L Motoring Offences</b>	1,057	92.2%	89	7.8%
<b>Admin Finalisations</b>	0	0.0%	34	100.0%
<b>TOTAL</b>	1,981	85.9%	326	14.1%