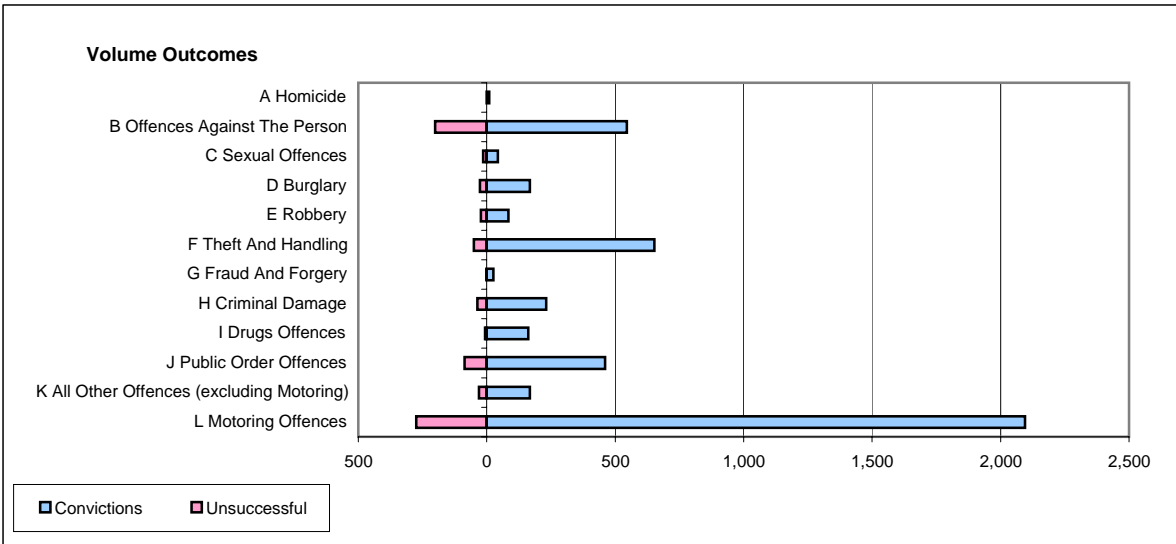
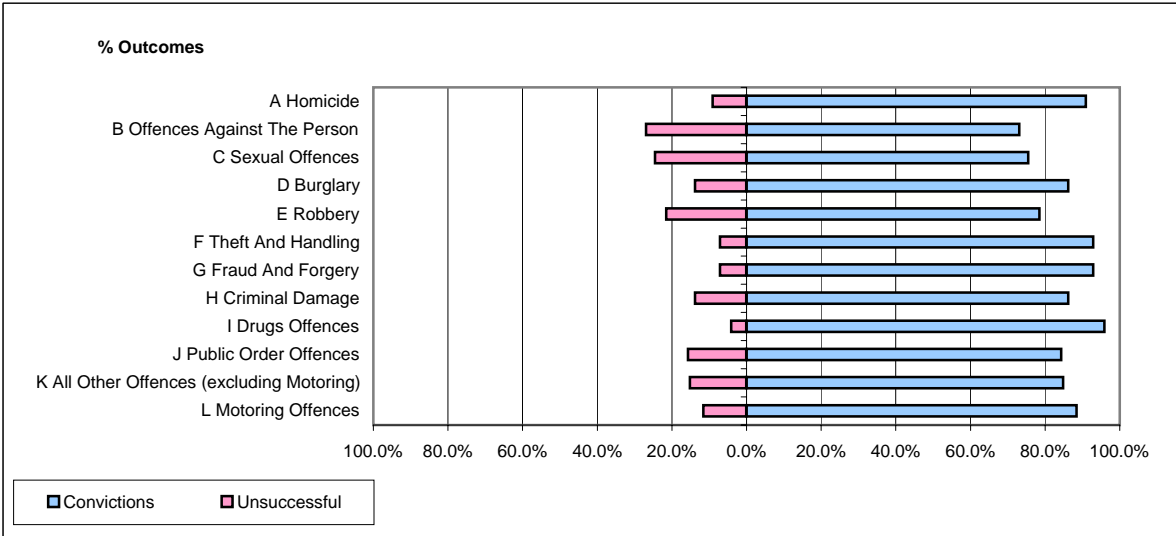


CPS OUTCOMES BY PRINCIPAL OFFENCE CATEGORY

October 2006

P15-GreaterManchester



	Convictions		Unsuccessful	
	Number of Defendants	%	Number of Defendants	%
A Homicide	10	90.9%	1	9.1%
B Offences Against The Person	545	73.1%	201	26.9%
C Sexual Offences	43	75.4%	14	24.6%
D Burglary	168	86.2%	27	13.8%
E Robbery	84	78.5%	23	21.5%
F Theft And Handling	652	92.9%	50	7.1%
G Fraud And Forgery	26	92.9%	2	7.1%
H Criminal Damage	231	86.2%	37	13.8%
I Drugs Offences	162	95.9%	7	4.1%
J Public Order Offences	461	84.3%	86	15.7%
K All Other Offences (excluding Motoring)	168	84.8%	30	15.2%
L Motoring Offences	2,095	88.4%	274	11.6%
Admin Finalisations	0	0.0%	193	100.0%
TOTAL	4,645	83.1%	945	16.9%