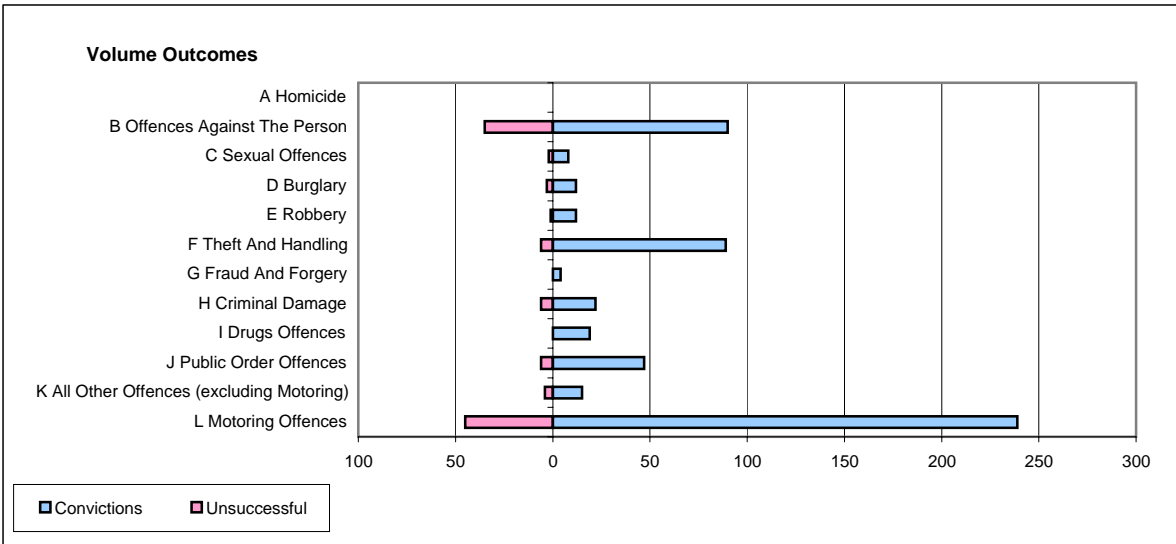
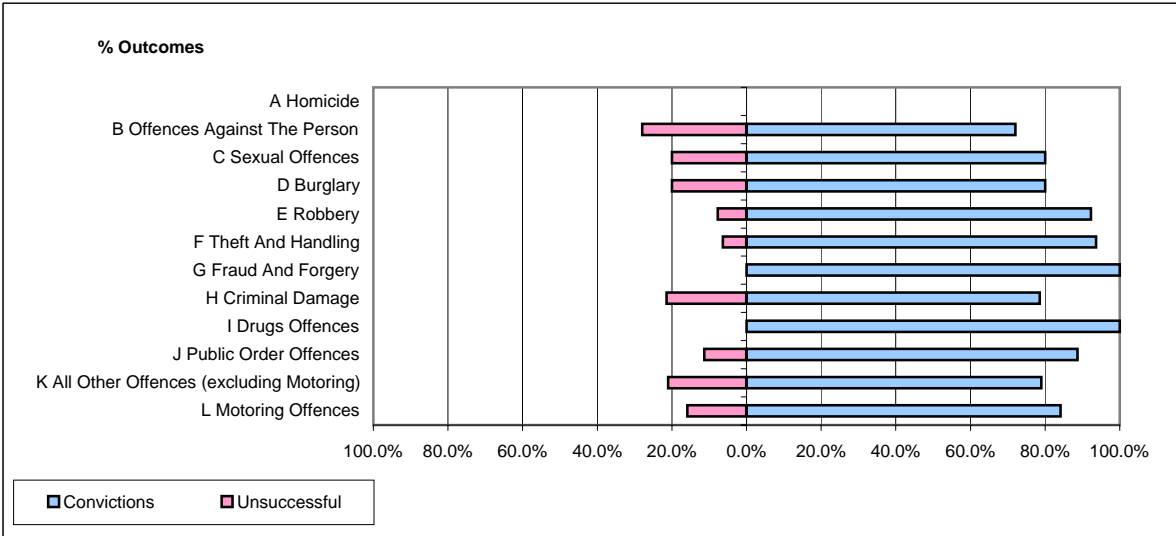


**CPS OUTCOMES BY PRINCIPAL OFFENCE CATEGORY**

**October 2006**

**P14-Gloucestershire**



	Convictions		Unsuccessful	
	Number of Defendants	%	Number of Defendants	%
<b>A Homicide</b>	<b>0</b>	<b>#DIV/0!</b>	<b>0</b>	<b>#DIV/0!</b>
<b>B Offences Against The Person</b>	<b>90</b>	<b>72.0%</b>	<b>35</b>	<b>28.0%</b>
<b>C Sexual Offences</b>	<b>8</b>	<b>80.0%</b>	<b>2</b>	<b>20.0%</b>
<b>D Burglary</b>	<b>12</b>	<b>80.0%</b>	<b>3</b>	<b>20.0%</b>
<b>E Robbery</b>	<b>12</b>	<b>92.3%</b>	<b>1</b>	<b>7.7%</b>
<b>F Theft And Handling</b>	<b>89</b>	<b>93.7%</b>	<b>6</b>	<b>6.3%</b>
<b>G Fraud And Forgery</b>	<b>4</b>	<b>100.0%</b>	<b>0</b>	<b>0.0%</b>
<b>H Criminal Damage</b>	<b>22</b>	<b>78.6%</b>	<b>6</b>	<b>21.4%</b>
<b>I Drugs Offences</b>	<b>19</b>	<b>100.0%</b>	<b>0</b>	<b>0.0%</b>
<b>J Public Order Offences</b>	<b>47</b>	<b>88.7%</b>	<b>6</b>	<b>11.3%</b>
<b>K All Other Offences (excluding Motoring)</b>	<b>15</b>	<b>78.9%</b>	<b>4</b>	<b>21.1%</b>
<b>L Motoring Offences</b>	<b>239</b>	<b>84.2%</b>	<b>45</b>	<b>15.8%</b>
<b>Admin Finalisations</b>	<b>0</b>	<b>0.0%</b>	<b>19</b>	<b>100.0%</b>
<b>TOTAL</b>	<b>557</b>	<b>81.4%</b>	<b>127</b>	<b>18.6%</b>