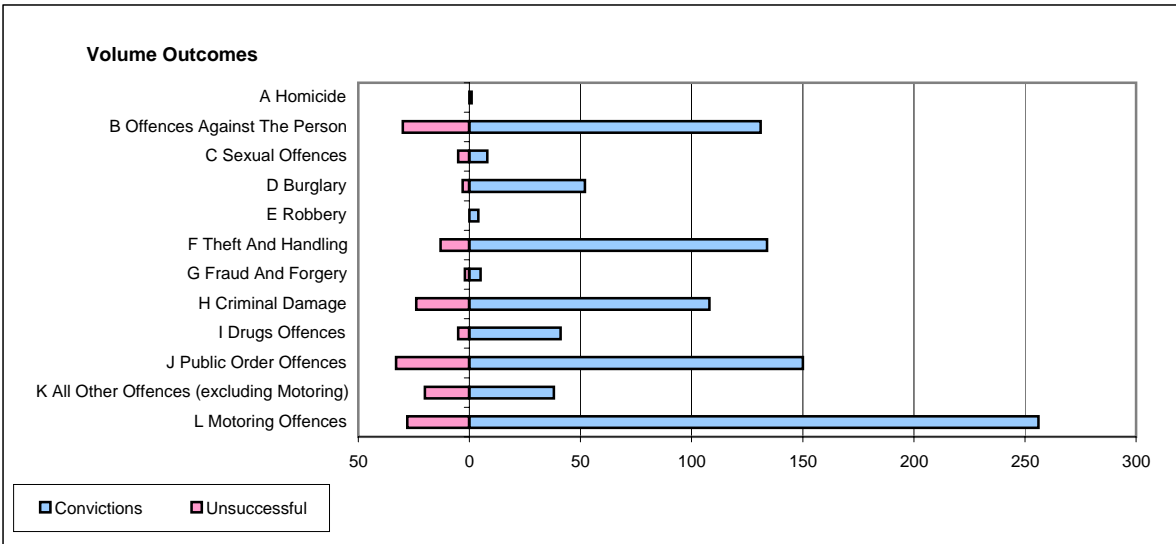
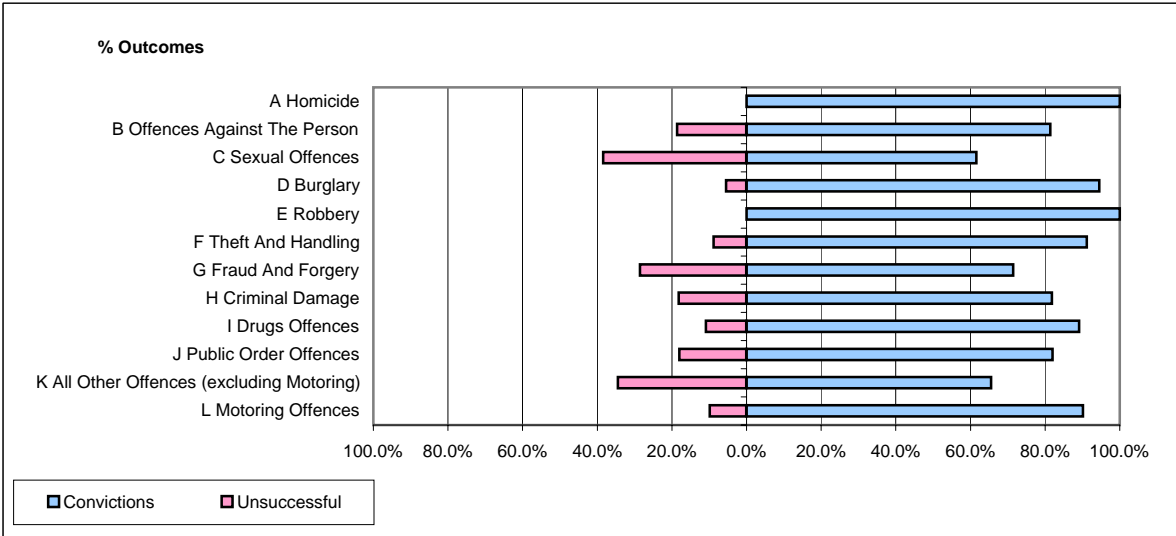


**CPS OUTCOMES BY PRINCIPAL OFFENCE CATEGORY**

**October 2006**

**P11-Durham**



	Convictions		Unsuccessful	
	Number of Defendants	%	Number of Defendants	%
<b>A Homicide</b>	<b>1</b>	<b>100.0%</b>	<b>0</b>	<b>0.0%</b>
<b>B Offences Against The Person</b>	<b>131</b>	<b>81.4%</b>	<b>30</b>	<b>18.6%</b>
<b>C Sexual Offences</b>	<b>8</b>	<b>61.5%</b>	<b>5</b>	<b>38.5%</b>
<b>D Burglary</b>	<b>52</b>	<b>94.5%</b>	<b>3</b>	<b>5.5%</b>
<b>E Robbery</b>	<b>4</b>	<b>100.0%</b>	<b>0</b>	<b>0.0%</b>
<b>F Theft And Handling</b>	<b>134</b>	<b>91.2%</b>	<b>13</b>	<b>8.8%</b>
<b>G Fraud And Forgery</b>	<b>5</b>	<b>71.4%</b>	<b>2</b>	<b>28.6%</b>
<b>H Criminal Damage</b>	<b>108</b>	<b>81.8%</b>	<b>24</b>	<b>18.2%</b>
<b>I Drugs Offences</b>	<b>41</b>	<b>89.1%</b>	<b>5</b>	<b>10.9%</b>
<b>J Public Order Offences</b>	<b>150</b>	<b>82.0%</b>	<b>33</b>	<b>18.0%</b>
<b>K All Other Offences (excluding Motoring)</b>	<b>38</b>	<b>65.5%</b>	<b>20</b>	<b>34.5%</b>
<b>L Motoring Offences</b>	<b>256</b>	<b>90.1%</b>	<b>28</b>	<b>9.9%</b>
<b>Admin Finalisations</b>	<b>0</b>	<b>0.0%</b>	<b>18</b>	<b>100.0%</b>
<b>TOTAL</b>	<b>928</b>	<b>83.7%</b>	<b>181</b>	<b>16.3%</b>