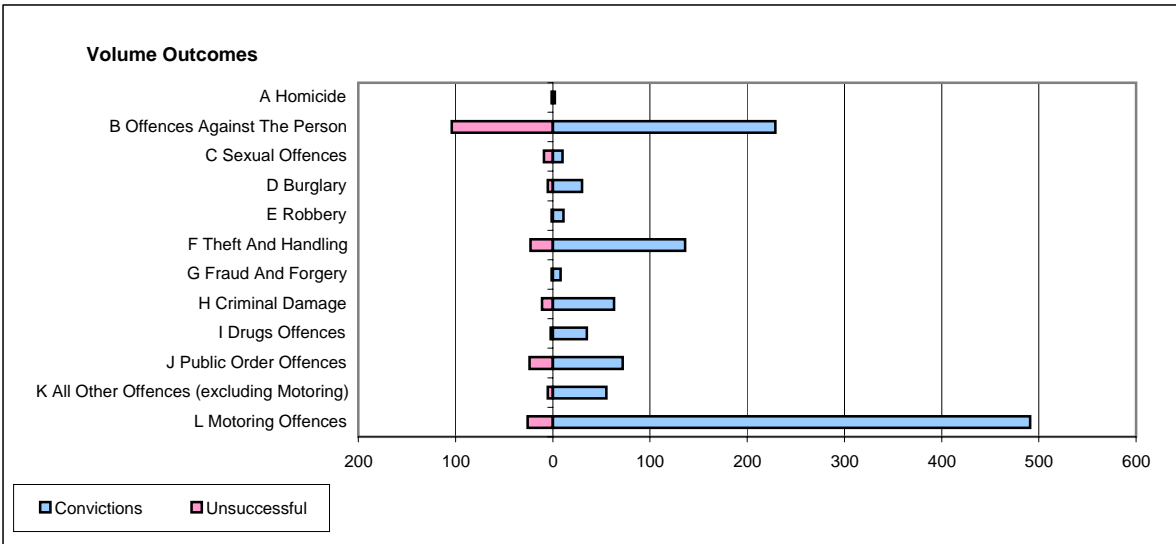
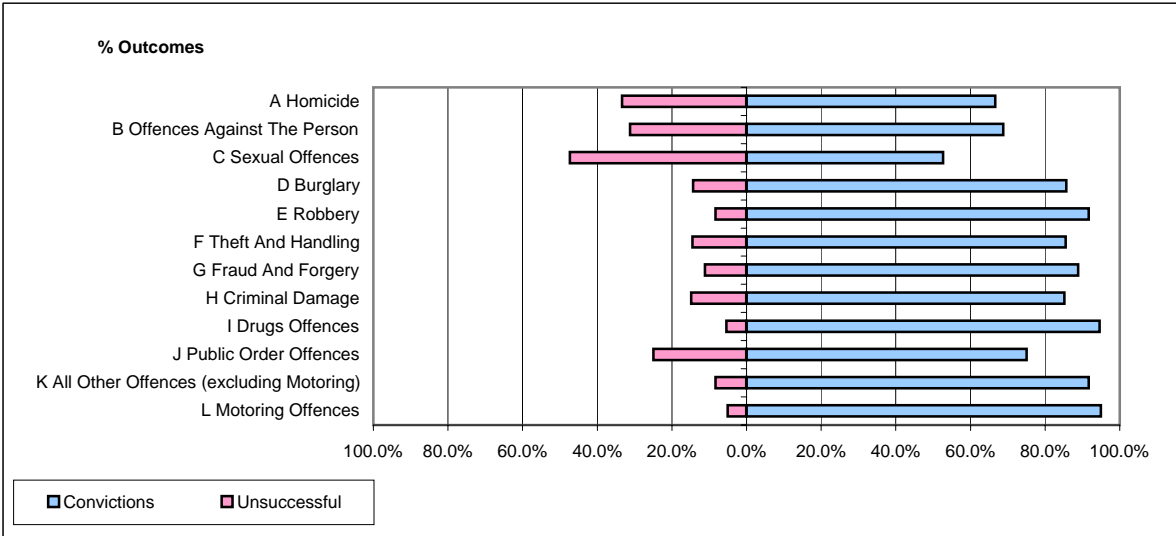


CPS OUTCOMES BY PRINCIPAL OFFENCE CATEGORY

October 2006

P08-Derbyshire



	Convictions		Unsuccessful	
	Number of Defendants	%	Number of Defendants	%
A Homicide	2	66.7%	1	33.3%
B Offences Against The Person	229	68.8%	104	31.2%
C Sexual Offences	10	52.6%	9	47.4%
D Burglary	30	85.7%	5	14.3%
E Robbery	11	91.7%	1	8.3%
F Theft And Handling	136	85.5%	23	14.5%
G Fraud And Forgery	8	88.9%	1	11.1%
H Criminal Damage	63	85.1%	11	14.9%
I Drugs Offences	35	94.6%	2	5.4%
J Public Order Offences	72	75.0%	24	25.0%
K All Other Offences (excluding Motoring)	55	91.7%	5	8.3%
L Motoring Offences	491	95.0%	26	5.0%
Admin Finalisations	0	0.0%	19	100.0%
TOTAL	1,142	83.2%	231	16.8%