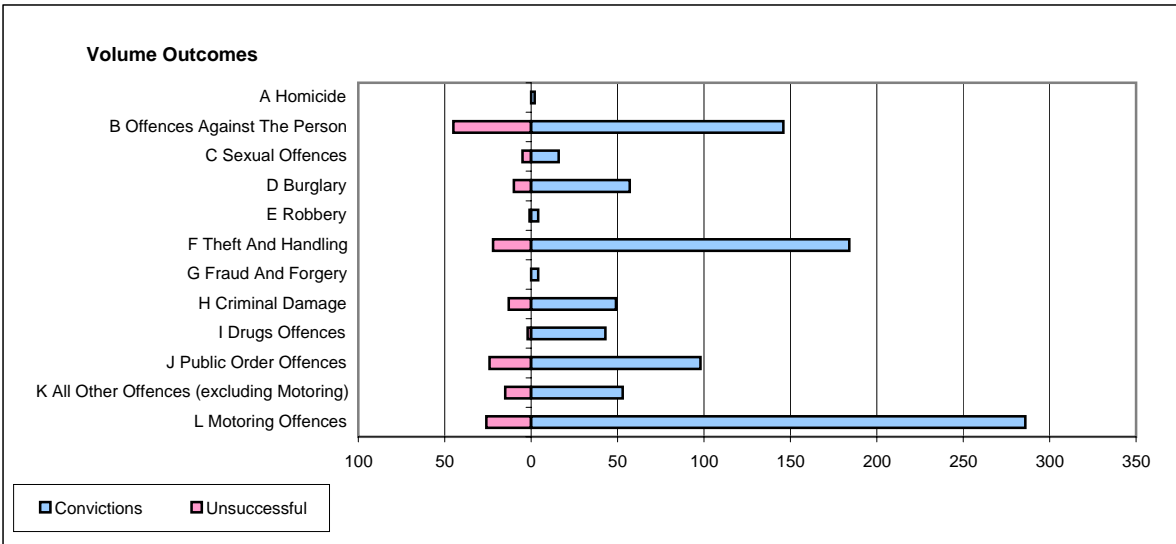
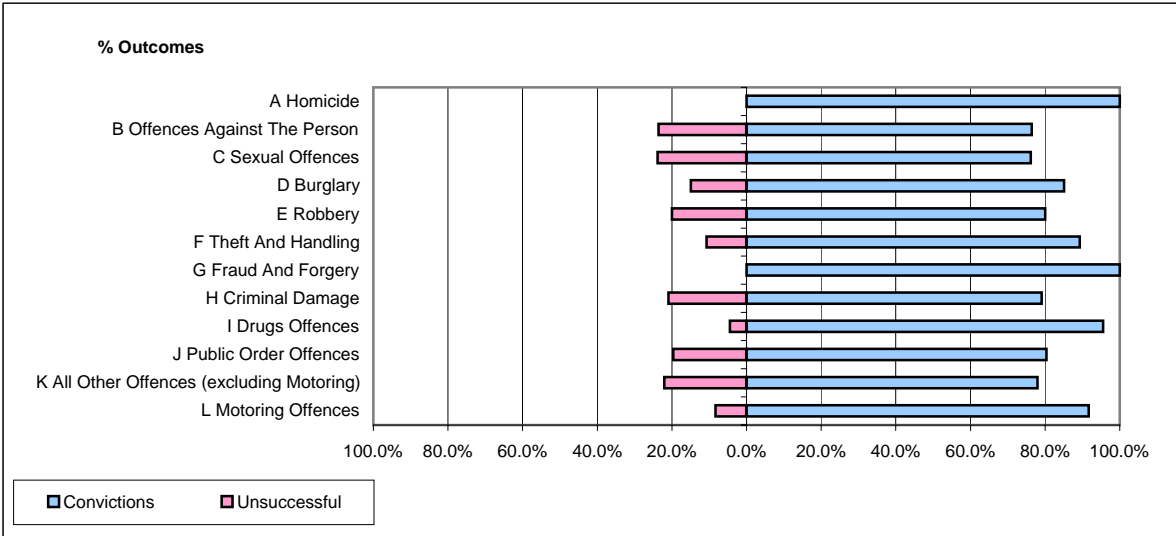


CPS OUTCOMES BY PRINCIPAL OFFENCE CATEGORY

October 2006

P06-Cleveland



	Convictions		Unsuccessful	
	Number of Defendants	%	Number of Defendants	%
A Homicide	2	100.0%	0	0.0%
B Offences Against The Person	146	76.4%	45	23.6%
C Sexual Offences	16	76.2%	5	23.8%
D Burglary	57	85.1%	10	14.9%
E Robbery	4	80.0%	1	20.0%
F Theft And Handling	184	89.3%	22	10.7%
G Fraud And Forgery	4	100.0%	0	0.0%
H Criminal Damage	49	79.0%	13	21.0%
I Drugs Offences	43	95.6%	2	4.4%
J Public Order Offences	98	80.3%	24	19.7%
K All Other Offences (excluding Motoring)	53	77.9%	15	22.1%
L Motoring Offences	286	91.7%	26	8.3%
Admin Finalisations	0	0.0%	14	100.0%
TOTAL	942	84.2%	177	15.8%