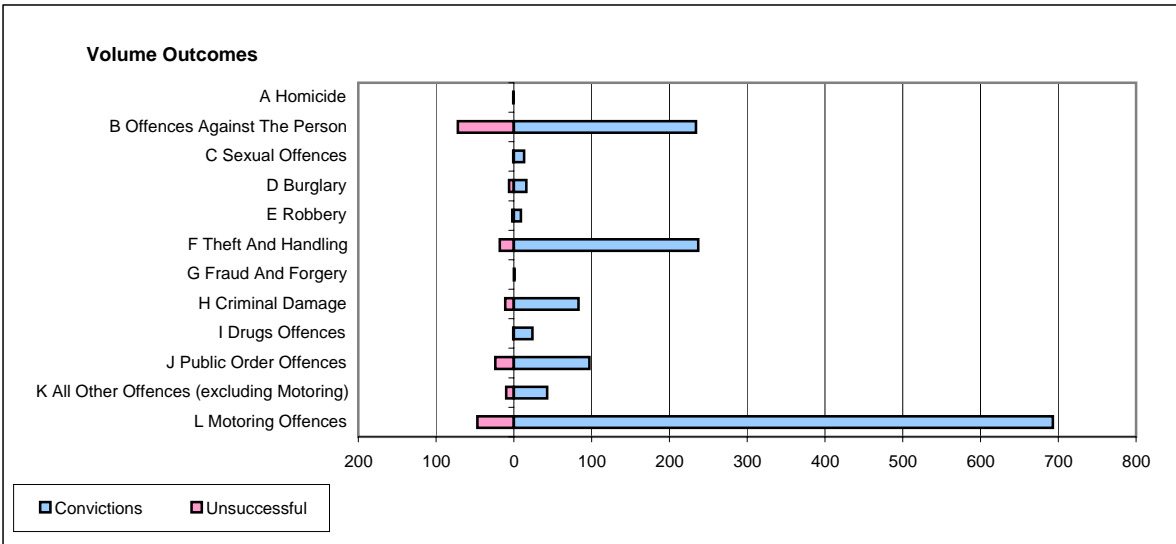
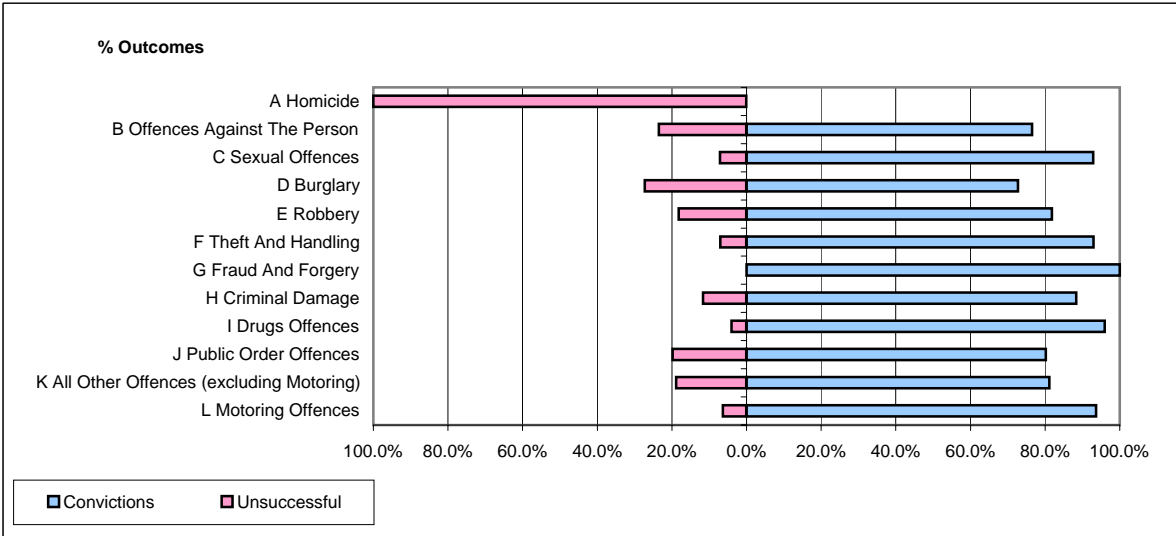


**CPS OUTCOMES BY PRINCIPAL OFFENCE CATEGORY**

**October 2006**

**P04-Cheshire**



	Convictions		Unsuccessful	
	Number of Defendants	%	Number of Defendants	%
<b>A Homicide</b>	<b>0</b>	<b>0.0%</b>	<b>1</b>	<b>100.0%</b>
<b>B Offences Against The Person</b>	<b>234</b>	<b>76.5%</b>	<b>72</b>	<b>23.5%</b>
<b>C Sexual Offences</b>	<b>13</b>	<b>92.9%</b>	<b>1</b>	<b>7.1%</b>
<b>D Burglary</b>	<b>16</b>	<b>72.7%</b>	<b>6</b>	<b>27.3%</b>
<b>E Robbery</b>	<b>9</b>	<b>81.8%</b>	<b>2</b>	<b>18.2%</b>
<b>F Theft And Handling</b>	<b>237</b>	<b>92.9%</b>	<b>18</b>	<b>7.1%</b>
<b>G Fraud And Forgery</b>	<b>1</b>	<b>100.0%</b>	<b>0</b>	<b>0.0%</b>
<b>H Criminal Damage</b>	<b>83</b>	<b>88.3%</b>	<b>11</b>	<b>11.7%</b>
<b>I Drugs Offences</b>	<b>24</b>	<b>96.0%</b>	<b>1</b>	<b>4.0%</b>
<b>J Public Order Offences</b>	<b>97</b>	<b>80.2%</b>	<b>24</b>	<b>19.8%</b>
<b>K All Other Offences (excluding Motoring)</b>	<b>43</b>	<b>81.1%</b>	<b>10</b>	<b>18.9%</b>
<b>L Motoring Offences</b>	<b>693</b>	<b>93.6%</b>	<b>47</b>	<b>6.4%</b>
<b>Admin Finalisations</b>	<b>0</b>	<b>0.0%</b>	<b>19</b>	<b>100.0%</b>
<b>TOTAL</b>	<b>1,450</b>	<b>87.2%</b>	<b>212</b>	<b>12.8%</b>