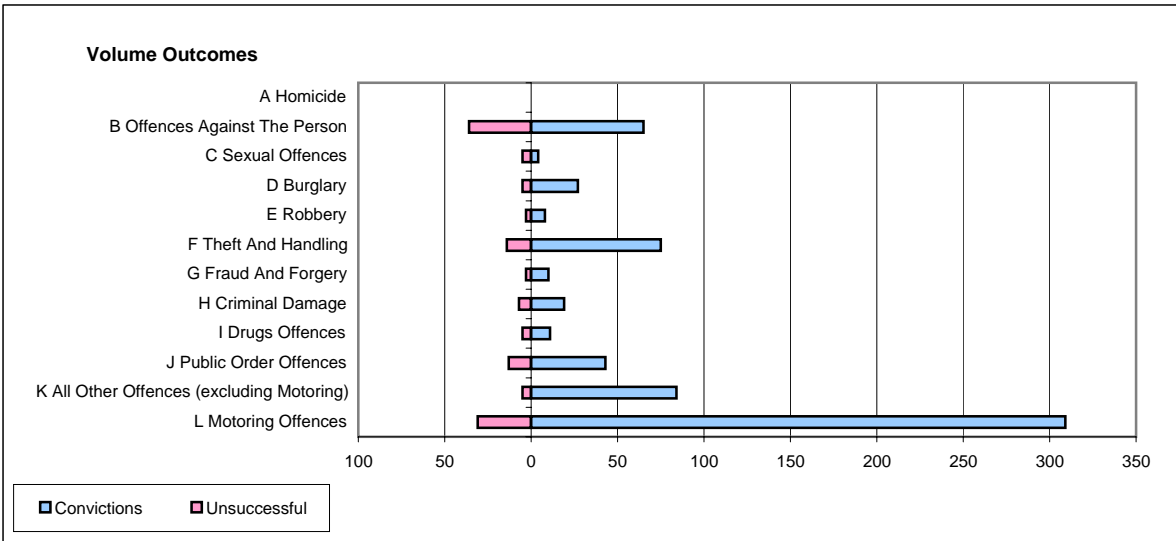
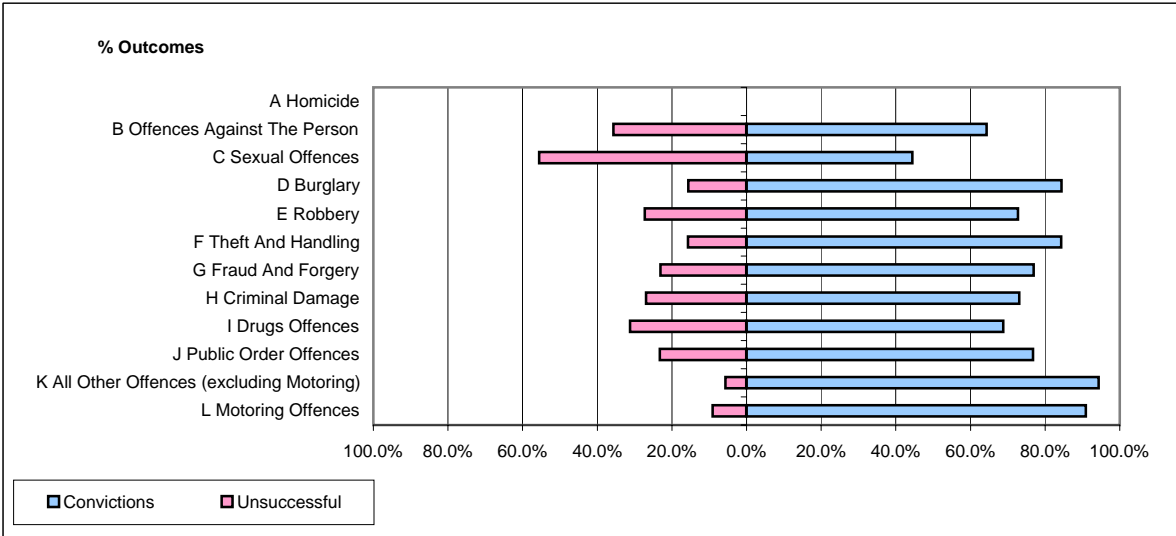


**CPS OUTCOMES BY PRINCIPAL OFFENCE CATEGORY**

**October 2006**

**P02-Bedfordshire**



	Convictions		Unsuccessful	
	Number of Defendants	%	Number of Defendants	%
<b>A Homicide</b>	<b>0</b>	<b>#DIV/0!</b>	<b>0</b>	<b>#DIV/0!</b>
<b>B Offences Against The Person</b>	<b>65</b>	<b>64.4%</b>	<b>36</b>	<b>35.6%</b>
<b>C Sexual Offences</b>	<b>4</b>	<b>44.4%</b>	<b>5</b>	<b>55.6%</b>
<b>D Burglary</b>	<b>27</b>	<b>84.4%</b>	<b>5</b>	<b>15.6%</b>
<b>E Robbery</b>	<b>8</b>	<b>72.7%</b>	<b>3</b>	<b>27.3%</b>
<b>F Theft And Handling</b>	<b>75</b>	<b>84.3%</b>	<b>14</b>	<b>15.7%</b>
<b>G Fraud And Forgery</b>	<b>10</b>	<b>76.9%</b>	<b>3</b>	<b>23.1%</b>
<b>H Criminal Damage</b>	<b>19</b>	<b>73.1%</b>	<b>7</b>	<b>26.9%</b>
<b>I Drugs Offences</b>	<b>11</b>	<b>68.8%</b>	<b>5</b>	<b>31.3%</b>
<b>J Public Order Offences</b>	<b>43</b>	<b>76.8%</b>	<b>13</b>	<b>23.2%</b>
<b>K All Other Offences (excluding Motoring)</b>	<b>84</b>	<b>94.4%</b>	<b>5</b>	<b>5.6%</b>
<b>L Motoring Offences</b>	<b>309</b>	<b>90.9%</b>	<b>31</b>	<b>9.1%</b>
<b>Admin Finalisations</b>	<b>0</b>	<b>0.0%</b>	<b>16</b>	<b>100.0%</b>
<b>TOTAL</b>	<b>655</b>	<b>82.1%</b>	<b>143</b>	<b>17.9%</b>