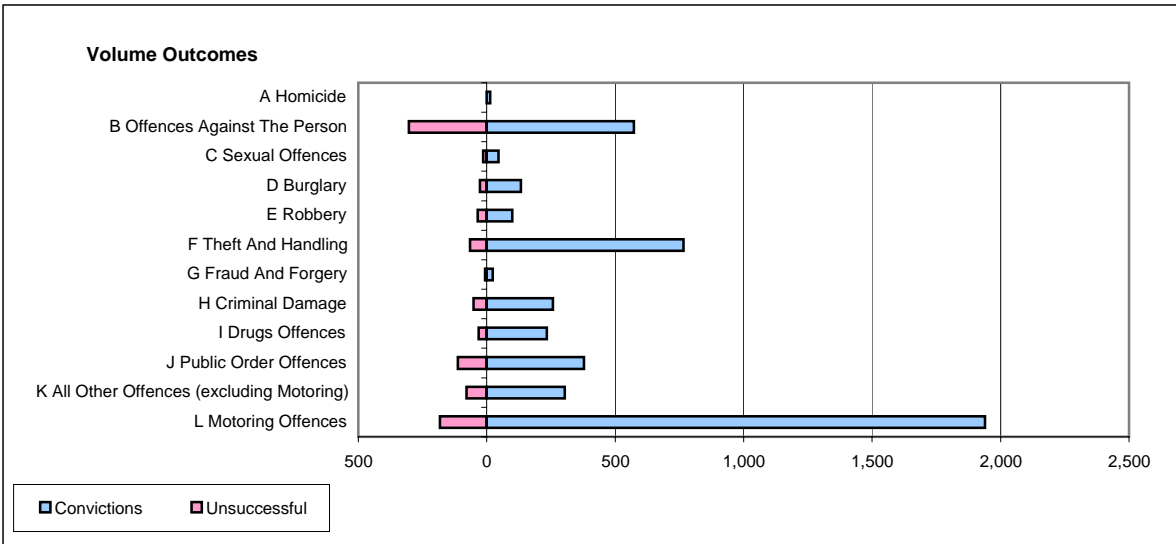
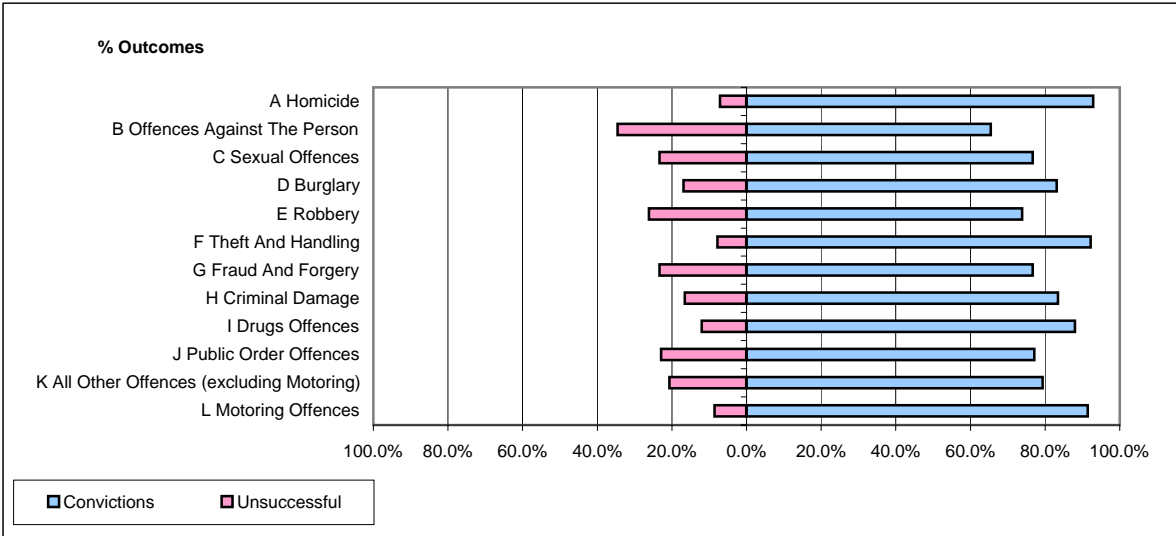


CPS OUTCOMES BY PRINCIPAL OFFENCE CATEGORY

September 2006

P41-WestMidlands



| | Convictions | | Unsuccessful | |
|--|----------------------|--------------|----------------------|--------------|
| | Number of Defendants | % | Number of Defendants | % |
| A Homicide | 13 | 92.9% | 1 | 7.1% |
| B Offences Against The Person | 573 | 65.4% | 303 | 34.6% |
| C Sexual Offences | 46 | 76.7% | 14 | 23.3% |
| D Burglary | 133 | 83.1% | 27 | 16.9% |
| E Robbery | 99 | 73.9% | 35 | 26.1% |
| F Theft And Handling | 766 | 92.2% | 65 | 7.8% |
| G Fraud And Forgery | 23 | 76.7% | 7 | 23.3% |
| H Criminal Damage | 257 | 83.4% | 51 | 16.6% |
| I Drugs Offences | 234 | 88.0% | 32 | 12.0% |
| J Public Order Offences | 378 | 77.1% | 112 | 22.9% |
| K All Other Offences (excluding Motoring) | 303 | 79.3% | 79 | 20.7% |
| L Motoring Offences | 1,939 | 91.4% | 182 | 8.6% |
| Admin Finalisations | 0 | 0.0% | 175 | 100.0% |
| TOTAL | 4,764 | 81.5% | 1,083 | 18.5% |