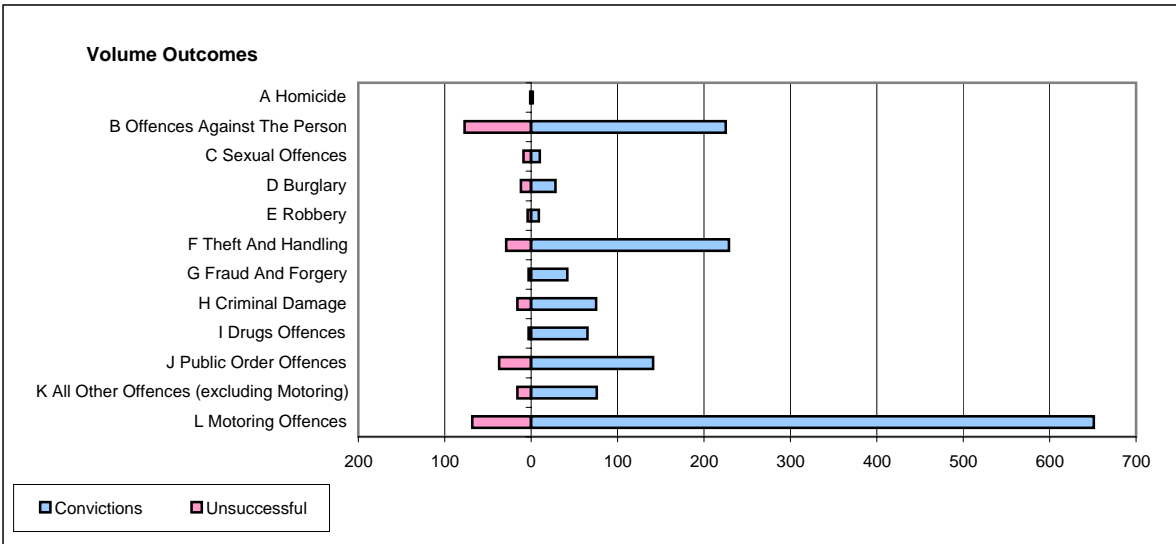
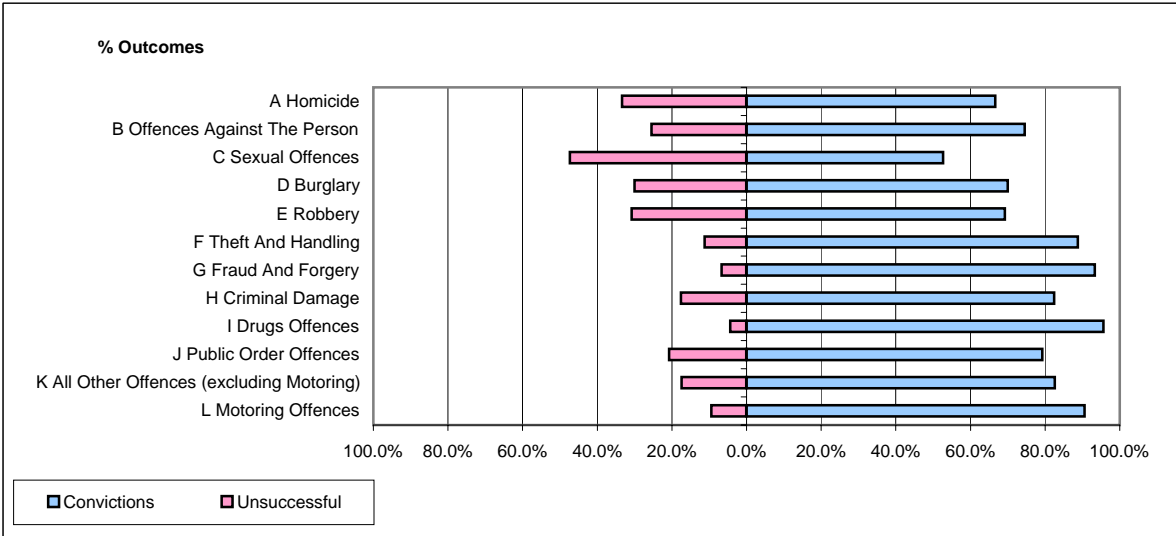


CPS OUTCOMES BY PRINCIPAL OFFENCE CATEGORY

September 2006

P37-Sussex



	Convictions		Unsuccessful	
	Number of Defendants	%	Number of Defendants	%
A Homicide	2	66.7%	1	33.3%
B Offences Against The Person	225	74.5%	77	25.5%
C Sexual Offences	10	52.6%	9	47.4%
D Burglary	28	70.0%	12	30.0%
E Robbery	9	69.2%	4	30.8%
F Theft And Handling	229	88.8%	29	11.2%
G Fraud And Forgery	42	93.3%	3	6.7%
H Criminal Damage	75	82.4%	16	17.6%
I Drugs Offences	65	95.6%	3	4.4%
J Public Order Offences	141	79.2%	37	20.8%
K All Other Offences (excluding Motoring)	76	82.6%	16	17.4%
L Motoring Offences	651	90.5%	68	9.5%
Admin Finalisations	0	0.0%	37	100.0%
TOTAL	1,553	83.3%	312	16.7%