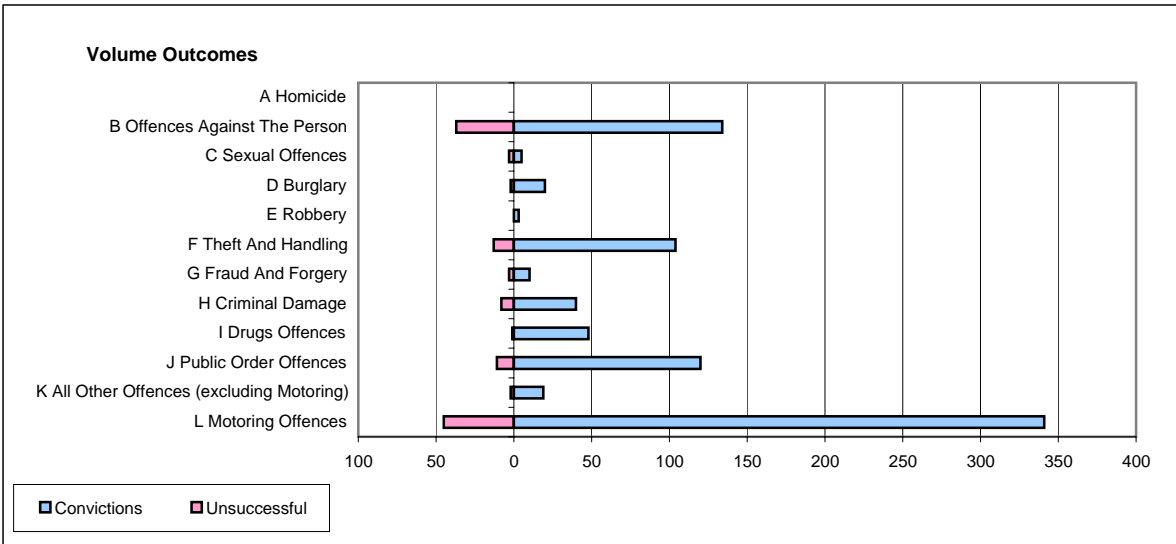
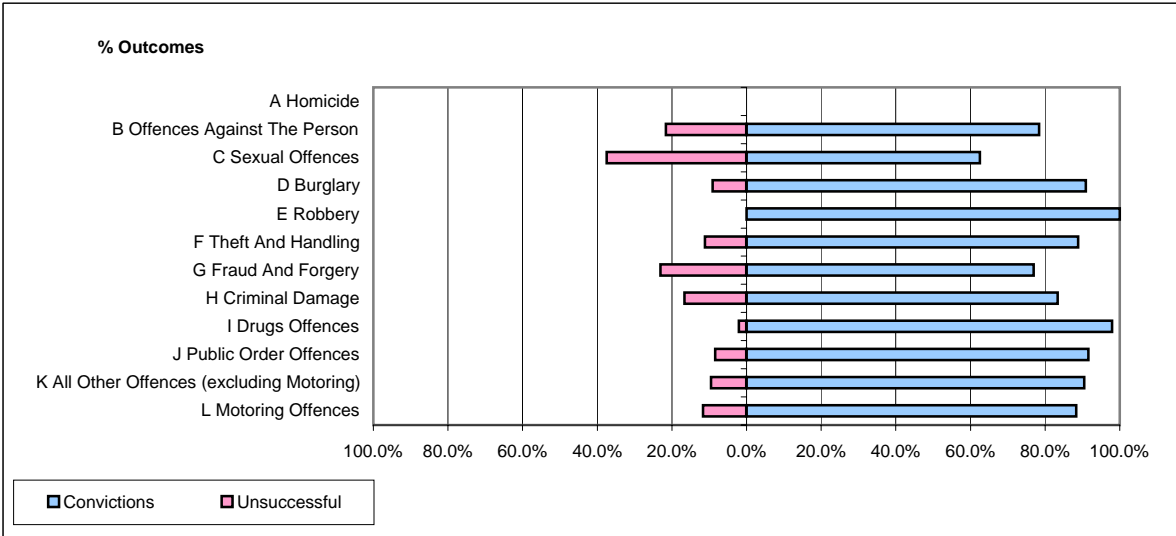


CPS OUTCOMES BY PRINCIPAL OFFENCE CATEGORY

September 2006

P35-Suffolk



	Convictions		Unsuccessful	
	Number of Defendants	%	Number of Defendants	%
A Homicide	0	#DIV/0!	0	#DIV/0!
B Offences Against The Person	134	78.4%	37	21.6%
C Sexual Offences	5	62.5%	3	37.5%
D Burglary	20	90.9%	2	9.1%
E Robbery	3	100.0%	0	0.0%
F Theft And Handling	104	88.9%	13	11.1%
G Fraud And Forgery	10	76.9%	3	23.1%
H Criminal Damage	40	83.3%	8	16.7%
I Drugs Offences	48	98.0%	1	2.0%
J Public Order Offences	120	91.6%	11	8.4%
K All Other Offences (excluding Motoring)	19	90.5%	2	9.5%
L Motoring Offences	341	88.3%	45	11.7%
Admin Finalisations	0	0.0%	20	100.0%
TOTAL	844	85.3%	145	14.7%