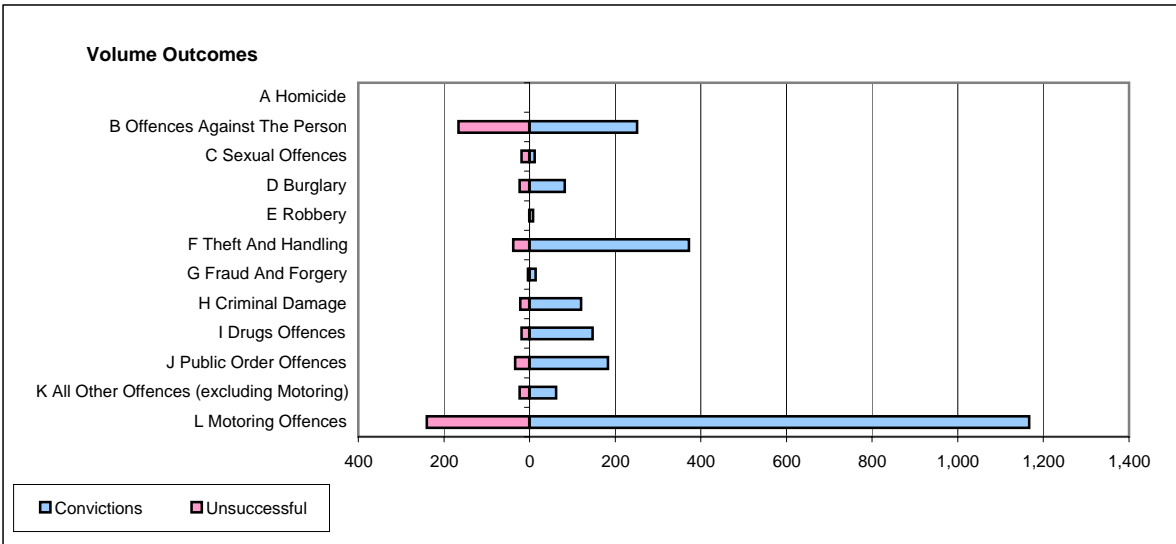
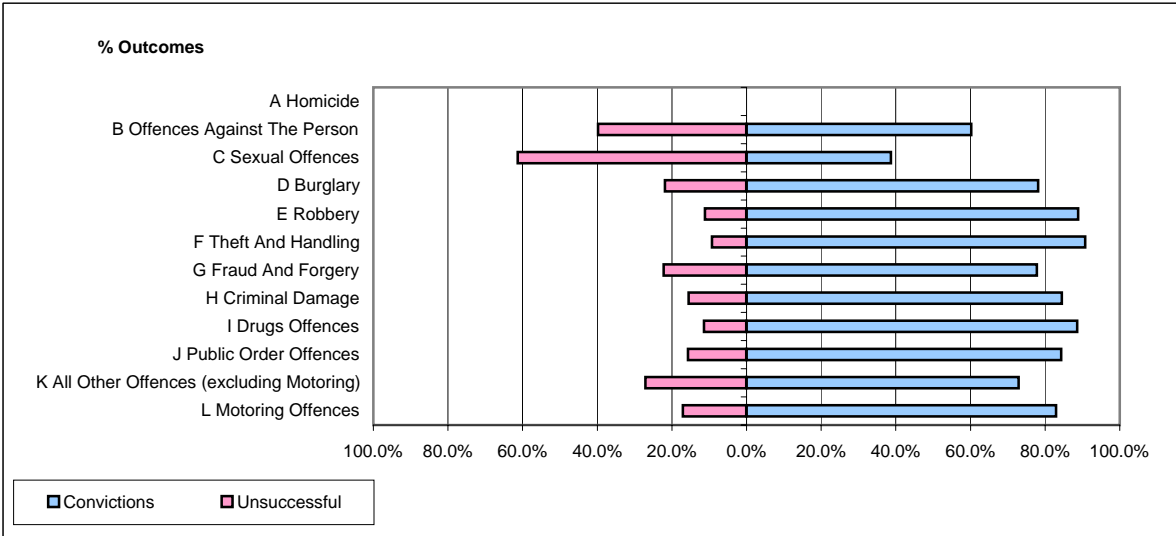


CPS OUTCOMES BY PRINCIPAL OFFENCE CATEGORY

September 2006

P32-SouthWales



	Convictions		Unsuccessful	
	Number of Defendants	%	Number of Defendants	%
A Homicide	0	#DIV/0!	0	#DIV/0!
B Offences Against The Person	251	60.2%	166	39.8%
C Sexual Offences	12	38.7%	19	61.3%
D Burglary	82	78.1%	23	21.9%
E Robbery	8	88.9%	1	11.1%
F Theft And Handling	372	90.7%	38	9.3%
G Fraud And Forgery	14	77.8%	4	22.2%
H Criminal Damage	120	84.5%	22	15.5%
I Drugs Offences	147	88.6%	19	11.4%
J Public Order Offences	183	84.3%	34	15.7%
K All Other Offences (excluding Motoring)	62	72.9%	23	27.1%
L Motoring Offences	1,167	82.9%	240	17.1%
Admin Finalisations	0	0.0%	134	100.0%
TOTAL	2,418	77.0%	723	23.0%