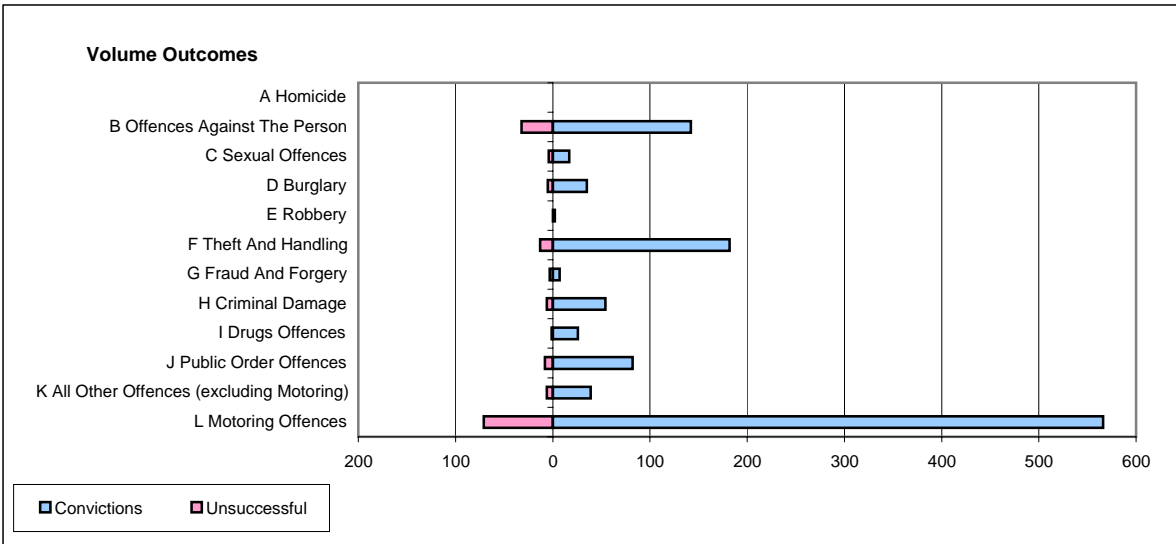
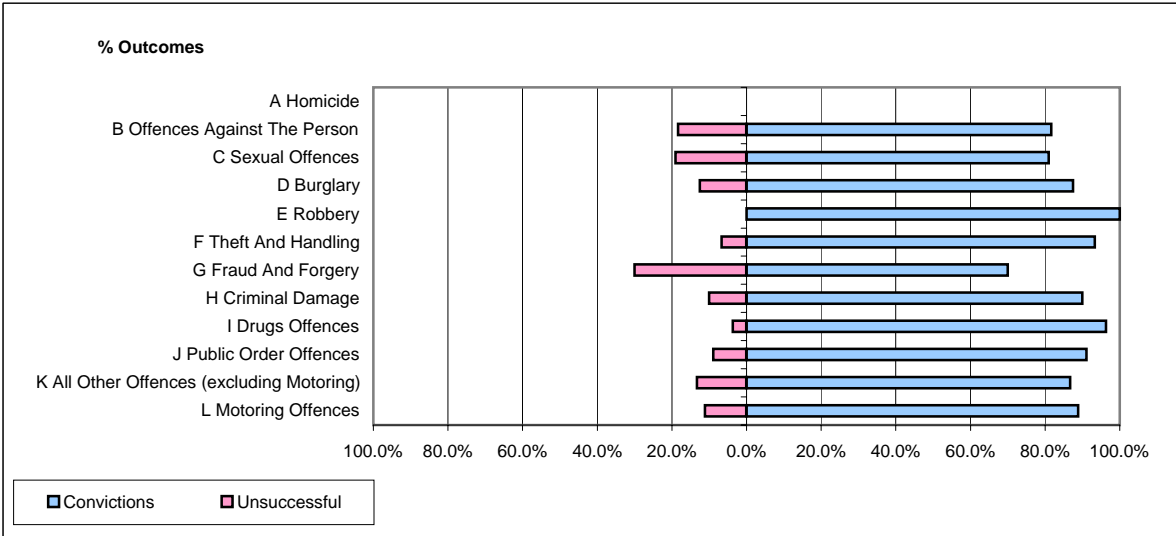


CPS OUTCOMES BY PRINCIPAL OFFENCE CATEGORY

September 2006

P26-Norfolk



	Convictions		Unsuccessful	
	Number of Defendants	%	Number of Defendants	%
A Homicide	0	#DIV/0!	0	#DIV/0!
B Offences Against The Person	142	81.6%	32	18.4%
C Sexual Offences	17	81.0%	4	19.0%
D Burglary	35	87.5%	5	12.5%
E Robbery	2	100.0%	0	0.0%
F Theft And Handling	182	93.3%	13	6.7%
G Fraud And Forgery	7	70.0%	3	30.0%
H Criminal Damage	54	90.0%	6	10.0%
I Drugs Offences	26	96.3%	1	3.7%
J Public Order Offences	82	91.1%	8	8.9%
K All Other Offences (excluding Motoring)	39	86.7%	6	13.3%
L Motoring Offences	566	88.9%	71	11.1%
Admin Finalisations	0	0.0%	25	100.0%
TOTAL	1,152	86.9%	174	13.1%