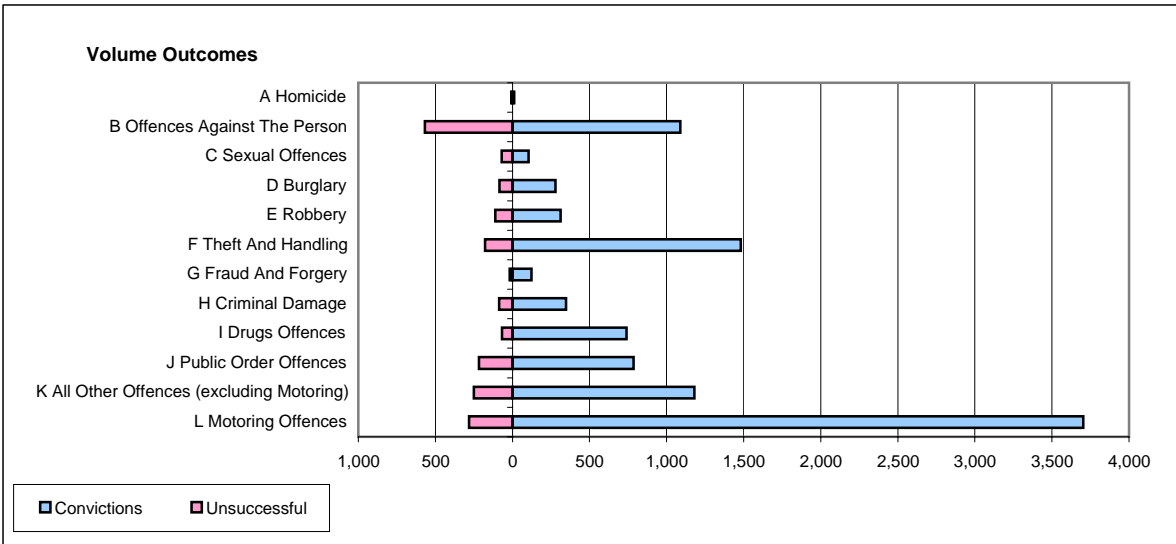
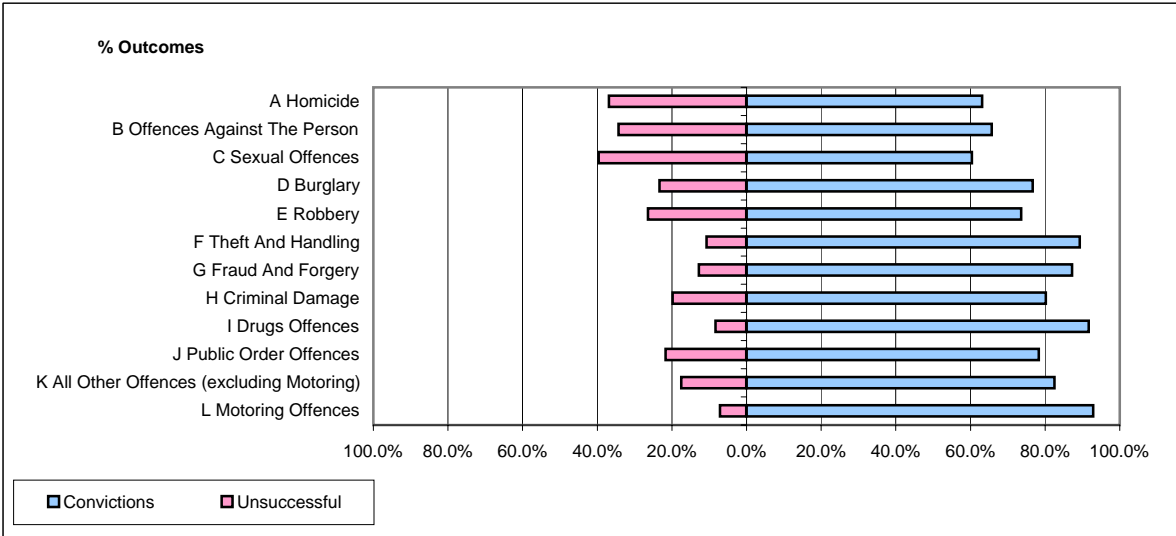


CPS OUTCOMES BY PRINCIPAL OFFENCE CATEGORY

September 2006

P25-Metropolitan&City



	Convictions		Unsuccessful	
	Number of Defendants	%	Number of Defendants	%
A Homicide	12	63.2%	7	36.8%
B Offences Against The Person	1,089	65.7%	569	34.3%
C Sexual Offences	105	60.3%	69	39.7%
D Burglary	280	76.7%	85	23.3%
E Robbery	312	73.6%	112	26.4%
F Theft And Handling	1,482	89.3%	178	10.7%
G Fraud And Forgery	123	87.2%	18	12.8%
H Criminal Damage	348	80.2%	86	19.8%
I Drugs Offences	741	91.7%	67	8.3%
J Public Order Offences	785	78.3%	217	21.7%
K All Other Offences (excluding Motoring)	1,181	82.5%	251	17.5%
L Motoring Offences	3,703	92.9%	282	7.1%
Admin Finalisations	0	0.0%	703	100.0%
TOTAL	10,161	79.4%	2,644	20.6%