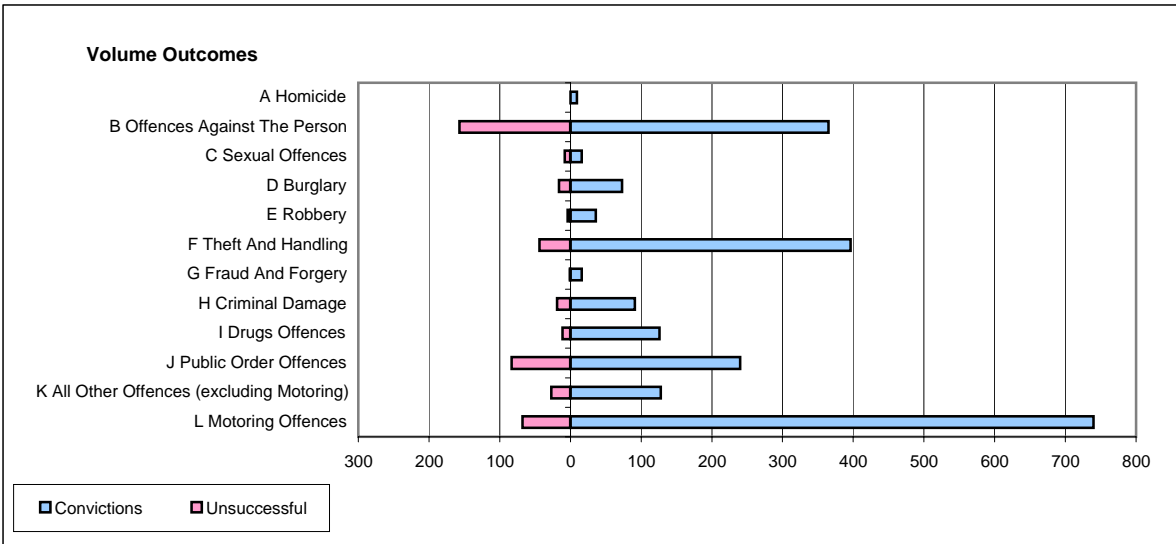
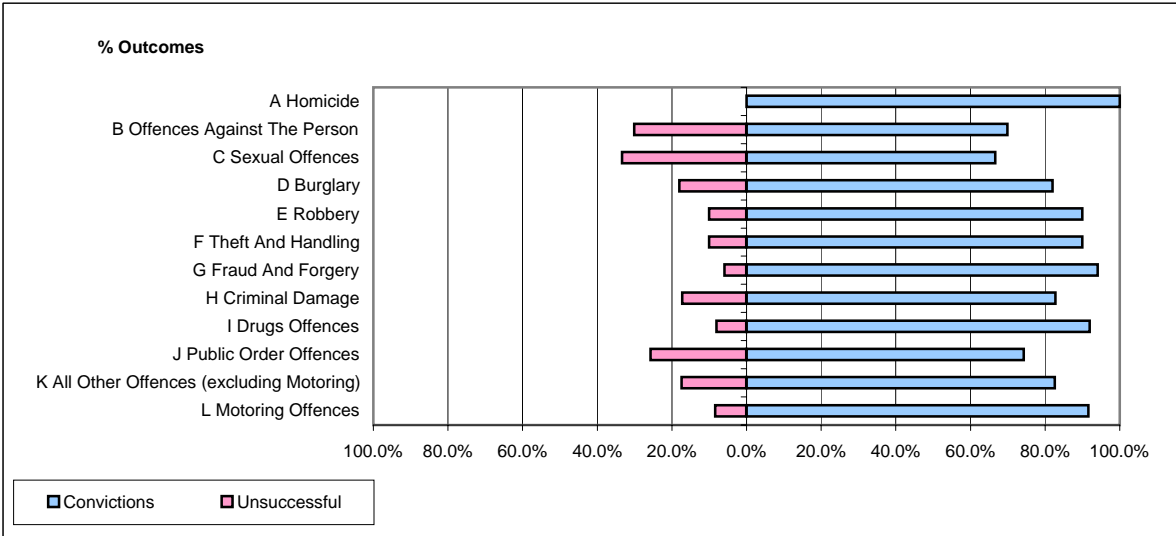


**CPS OUTCOMES BY PRINCIPAL OFFENCE CATEGORY**

**September 2006**

**P24-Merseyside**



	Convictions		Unsuccessful	
	Number of Defendants	%	Number of Defendants	%
<b>A Homicide</b>	<b>9</b>	<b>100.0%</b>	<b>0</b>	<b>0.0%</b>
<b>B Offences Against The Person</b>	<b>365</b>	<b>69.9%</b>	<b>157</b>	<b>30.1%</b>
<b>C Sexual Offences</b>	<b>16</b>	<b>66.7%</b>	<b>8</b>	<b>33.3%</b>
<b>D Burglary</b>	<b>73</b>	<b>82.0%</b>	<b>16</b>	<b>18.0%</b>
<b>E Robbery</b>	<b>36</b>	<b>90.0%</b>	<b>4</b>	<b>10.0%</b>
<b>F Theft And Handling</b>	<b>396</b>	<b>90.0%</b>	<b>44</b>	<b>10.0%</b>
<b>G Fraud And Forgery</b>	<b>16</b>	<b>94.1%</b>	<b>1</b>	<b>5.9%</b>
<b>H Criminal Damage</b>	<b>91</b>	<b>82.7%</b>	<b>19</b>	<b>17.3%</b>
<b>I Drugs Offences</b>	<b>126</b>	<b>92.0%</b>	<b>11</b>	<b>8.0%</b>
<b>J Public Order Offences</b>	<b>240</b>	<b>74.3%</b>	<b>83</b>	<b>25.7%</b>
<b>K All Other Offences (excluding Motoring)</b>	<b>128</b>	<b>82.6%</b>	<b>27</b>	<b>17.4%</b>
<b>L Motoring Offences</b>	<b>740</b>	<b>91.6%</b>	<b>68</b>	<b>8.4%</b>
<b>Admin Finalisations</b>	<b>0</b>	<b>0.0%</b>	<b>68</b>	<b>100.0%</b>
<b>TOTAL</b>	<b>2,236</b>	<b>81.5%</b>	<b>506</b>	<b>18.5%</b>