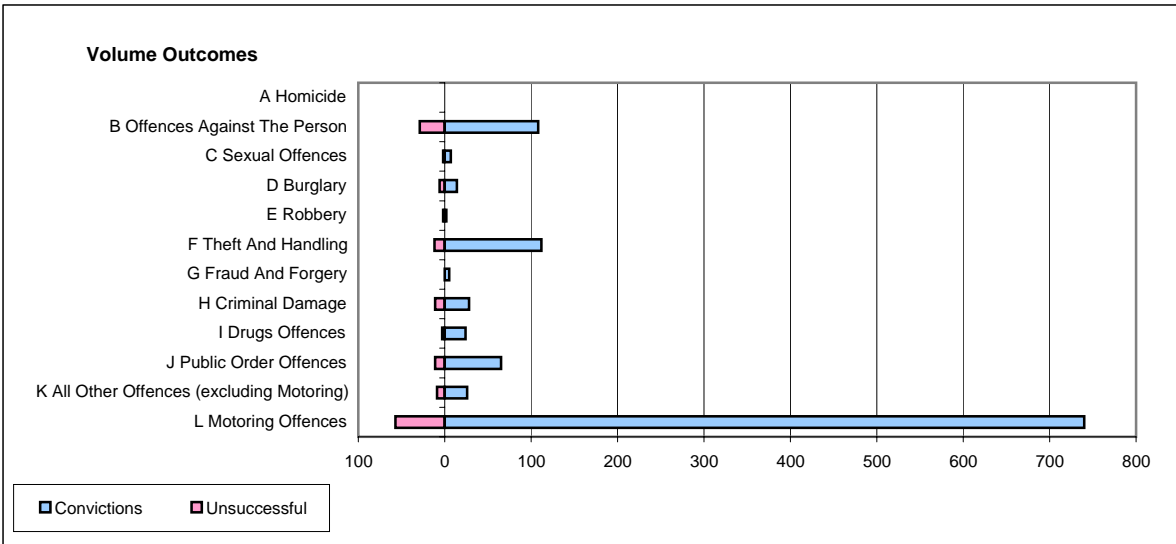
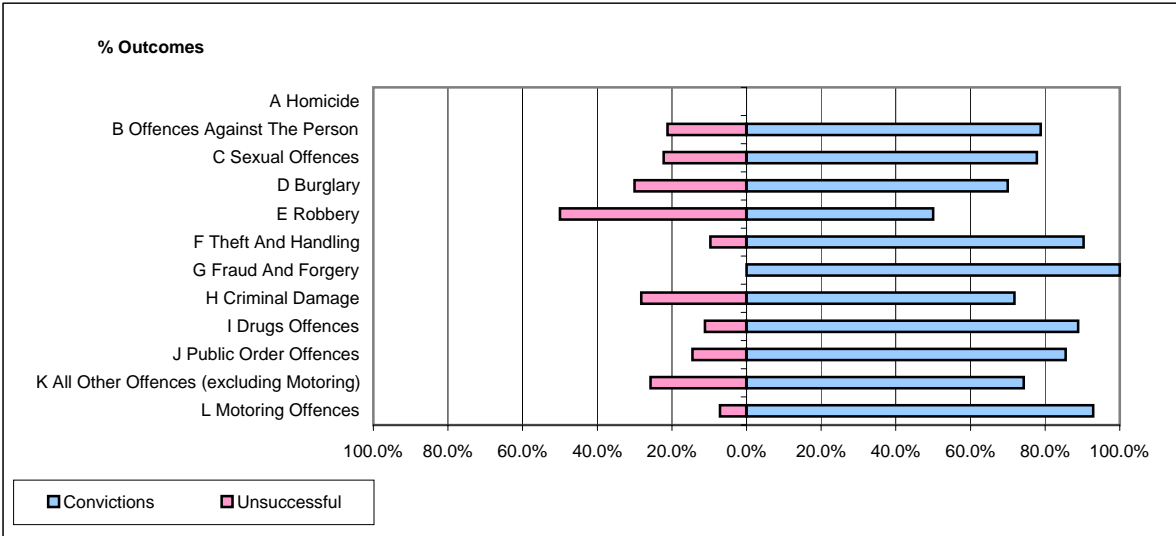


CPS OUTCOMES BY PRINCIPAL OFFENCE CATEGORY

September 2006

P23-Lincolnshire



	Convictions		Unsuccessful	
	Number of Defendants	%	Number of Defendants	%
A Homicide	0	#DIV/0!	0	#DIV/0!
B Offences Against The Person	108	78.8%	29	21.2%
C Sexual Offences	7	77.8%	2	22.2%
D Burglary	14	70.0%	6	30.0%
E Robbery	2	50.0%	2	50.0%
F Theft And Handling	112	90.3%	12	9.7%
G Fraud And Forgery	5	100.0%	0	0.0%
H Criminal Damage	28	71.8%	11	28.2%
I Drugs Offences	24	88.9%	3	11.1%
J Public Order Offences	65	85.5%	11	14.5%
K All Other Offences (excluding Motoring)	26	74.3%	9	25.7%
L Motoring Offences	740	92.8%	57	7.2%
Admin Finalisations	0	0.0%	18	100.0%
TOTAL	1,131	87.6%	160	12.4%